

NOTE:
Previously
a PVAA

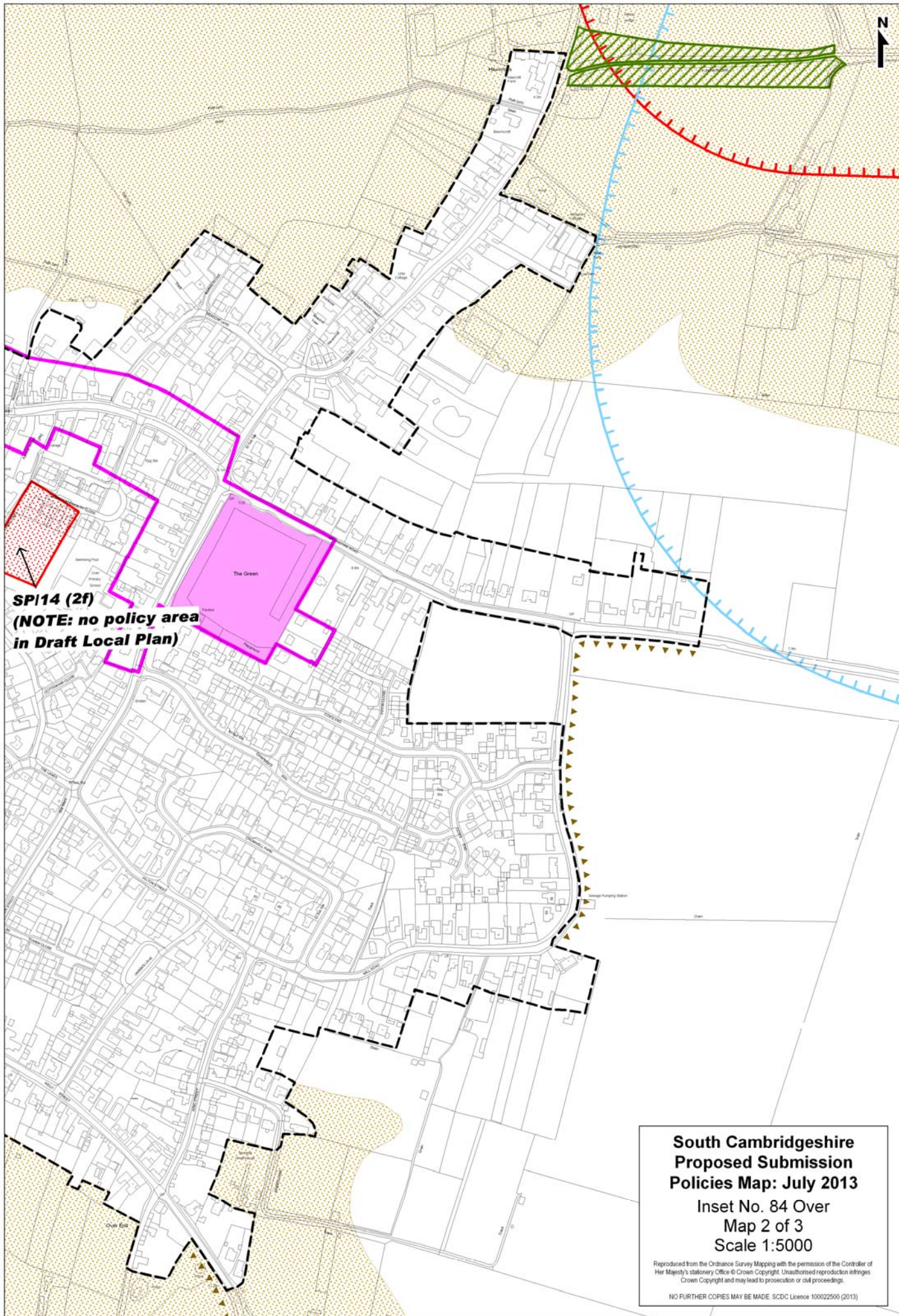
Over

SPI14 (2f)
**(NOTE: no policy area
in Draft Local Plan)**

SC1 (1a)

**South Cambridgeshire
Proposed Submission
Policies Map: July 2013**
Inset No. 84 Over
Map 1 of 3
Scale 1:5000

Reproduced from the Ordnance Survey Mapping with the permission of the Controller of Her Majesty's Stationery Office © Crown Copyright. Unauthorised reproduction infringes Crown Copyright and may lead to prosecution or civil proceedings.
NO FURTHER COPIES MAY BE MADE. SCDL Licence 100022500 (2013)

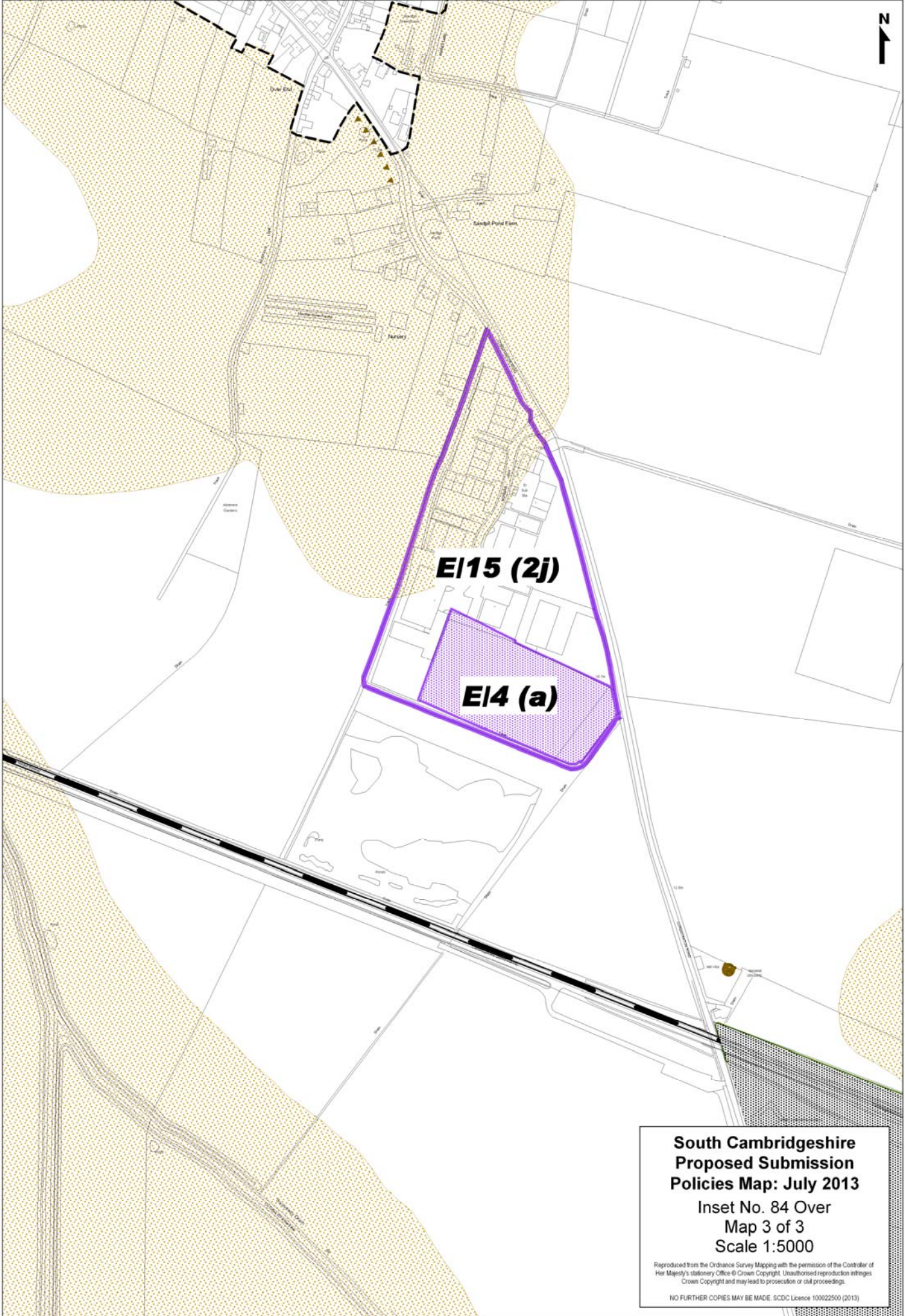


SPI14 (2f)
**(NOTE: no policy area
in Draft Local Plan)**

**South Cambridgeshire
Proposed Submission
Policies Map: July 2013**
Inset No. 84 Over
Map 2 of 3
Scale 1:5000

Reproduced from the Ordnance Survey Mapping with the permission of the Controller of Her Majesty's Stationery Office © Crown Copyright. Unauthorised reproduction infringes Crown Copyright and may lead to prosecution or civil proceedings.

NO FURTHER COPIES MAY BE MADE. SCDC Licence 100022500 (2013)



**South Cambridgeshire
Proposed Submission
Policies Map: July 2013**

Inset No. 84 Over
Map 3 of 3
Scale 1:5000

Reproduced from the Ordnance Survey Mapping with the permission of the Controller of Her Majesty's Stationery Office © Crown Copyright. Unauthorised reproduction infringes Crown Copyright and may lead to prosecution or civil proceedings.

NO FURTHER COPIES MAY BE MADE. SCDC Licence 100022500 (2013)