



1 LEAP Plan
Scale: 1:200

PROPOSED FURNITURE



B1 Proposed Bench | Tiptree Seat | Supplier: Broxap | Product Code: BX14 4030-BP | Galvanized steel legs with treated softwood | Finish: Black powder coated for metal members & arm rests | Fixing: Root fixed as per manufacturer's specifications



B2 Proposed Bench | Bespoke Bench | Fixing: As per manufacturer's specifications For details ref. to drawing TRF-CBA-1-GF-M2-L-8300



CS Proposed Cycle Stands Sheffield Cycle Stand | Supplier: Broxap | Product Code: BXMW/GS/Sheffield-Stand | Finish: Galvanized steel Black powder coated | Fixing: Root fixed as per manufacturer's specifications



LB Proposed Litter Bins | Litter Bins with lid | Supplier: Furnitubes - Tenby Litter Bin | Product Code: TSL 231 | Dimensions: 530(a) x 750 (H) | Fixing: Root fixed as per manufacturer's detail specifications



B01 Proposed Timber Bollard | Supplier: Broxap | Product Code: BX17 Painted - Square | Dimensions: 150x150mm x1000mm | Fixing: Fixed into concrete footing. Reflective bands in rebates. Granite setts surrounded.

PROPOSED PLAY ELEMENTS



PE1 Cradle Nest Special | Supplier: Timber Play | Product Code: 6.14520 | Fixing: As per manufacturer's detail specifications



PE2 Toddler Twin Swing | Supplier: Timber Play | Product Code: 6.12720 | Fixing: As per manufacturer's detail specifications



PE3 Stepping Stones | Granite | Varied shapes with min. size 0.9 x 0.9 m | Finish: Flamed | Colour: Beige | Contractor to submit proposal



PE4 Slide | Stainless Steel | 3500 L x 1500 W x 1800 + 550mm H | Attached at top and bottom with mounting plates | Product: 3.84210 | Supplier: Richter Spielgerate GmbH | Fixed to manufacturer's recommendation



PE5 Wobble Dish | Supplier: Timber Play | Product Code: 6.27300 | Fixing: As per manufacturer's detail specifications



PE6 3 Stepping logs | Supplier: Timber Play | Product Codes: 6.82003; 6.82004; 6.82005 | Fixing: As per manufacturer's specifications



PE7 Large Spinner | Supplier: Timber Play | Product Code: 6.26402 | Fixing: As per manufacturer's detail specifications



PE8 Little Chicken | Supplier: Timber Play | Product Code: 4.08100 | Fixing: As per manufacturer's detail specifications



PE9 Small Hexagonal Hut with roof | Supplier: Timber Play | Product Code: 3.15300 | Fixing: As per manufacturer's detail specifications



PE10 Bespoke Play Feature. For details ref. to drawing TRF-CBA-1-GF-M2-L-8301



PE11 Bespoke Timber Logs | Fixing: As per manufacturer's detail specifications



PE12 Boulders | Sizes: 900 mm x 600 mm x 600 mm | Supplier: CED Natural stone or similar approved



PE13 Mount Ridge Play Unit | Supplier: Hand Made Places | Product Code: BX/HMP 250035 | Fixing: As per manufacturer's detail specifications

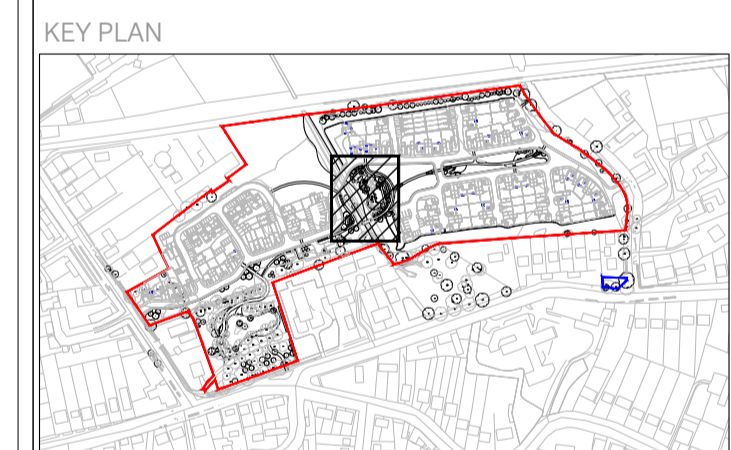
This document should not be relied on or used in circumstances other than those for which it was prepared and for which Chris Blandford Associates was commissioned. Chris Blandford Associates accepts no responsibility for this document to any other party other than the person by whom it was commissioned.

Key

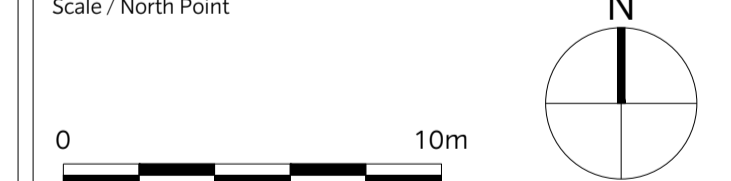
- Existing tree
- Existing hedge along chalk stream to be thinned as per ecologist guidance
- Proposed tree
- Proposed specimen shrub
- Proposed hedge
- Proposed shrub planting
- Proposed lawn
- Proposed wildflower meadow
- Fence to play area
- Access gate to play area
- Safety surfacing
- CS- Proposed cycle stand
- LB - Proposed litter bin
- SI - Proposed signage (to include information as: no dogs allowed, appropriate play age group)

Note:

- For materials/ finishes refer to Hard Landscape Strategy: TRF-CBA-1-GF-M2-L-1010 and TRF-CBA-1-GF-M2-L-1011
- For planting strategy for surrounding areas, refer to TRF-CBA-1-GF-M2-L-4000 and TRF-CBA-1-GF-M2-L-4001
- For planting species, refer to Planting Schedule TRF-CBA-1-GF-M2-L-4011



Rev	Date	Drw	Revision or reason for Issue
P4	12/04/21	AS	For Planning
P3	10/06/20	PC	Revised Reserved Matters Application
P2	28/02/20	MA	Revised Reserved Matters Application
SO	08/11/19	MA	Stage 3 Issue
P1	06/09/19	SM	Issued For Planning
PO	23/08/19	MA	Issued For Planning



CHRIS BLANDFORD ASSOCIATES
landscape | environment | heritage

The Print Rooms Studio 511 164/180 Union St Waterloo London SE1 0LH
T +44 (0)20 7089 6480 E mail@cbastudios.com W www.cbastudios.com

Client
Castlefield International Limited

Project Title
TEVERSHAM ROAD FULBOURN

Drawing Series and Title
Detail Plan
LEAP

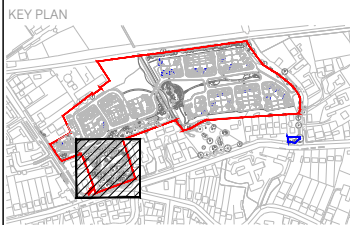
Scale @ A1 1:200 Drawn PC AUG 2019 Date
Approved AS FOR PLANNING Drawing Status

Drawing number TRF-CBA-1-GF-M2-L-2000 Revision P4

This document should not be relied on or used in circumstances other than those for which it was prepared and for which Chris Blandford Associates was commissioned. Chris Blandford Associates accepts no responsibility for this document to any other party other than the person by whom it was commissioned.

- KEY**
- Site / Application boundary
 - Existing tree to be retained
 - Existing tree to be removed
 - Proposed tree
 - Existing hedge to be thinned as per ecologist guidance
 - Existing pond
 - Existing Path to be Retained
 - Proposed Breedon Path
 - Proposed Raised Timber Deck (Cycle/pedestrian bridge)
 - Proposed hedge
 - Retained landscape with additional grassland/ scrub mosaic planting as required
 - Existing Woodland to be retained
 - Proposed native tree / shrub mix
 - Proposed Wildflower Meadow
 - Proposed Habitat retention/ translocation areas Grasslands/Scrub mosaic + log piles Hibernacula. Existing grassland/ scrub to be retained.
 - Existing pond edges to be repaired and made good
 - Proposed timber fence
 - Proposed bench

- For Hard Landscape strategy refer to drawings TRF-CBA-1-GF-M2-L-1010 & TRF-CBA-1-GF-M2-L-1011
- For Planting strategy refer to drawings TRF-CBA-1-GF-M2-L-4000 & TRF-CBA-1-GF-M2-L-4001



P1	11/03/20	PC	Revised submission
PO	21/02/20	SM	Revised Reserved Matters Application
Rev	Date	Drw	Revision or reason for Issue



CHRIS BLANDFORD ASSOCIATES
 landscape | environment | heritage
 The Print Rooms Studio 511 164/180 Union St Waterloo London SE1 0UH
 T +44 (0)20 7089 6480 E mail@cbastudios.com W www.cbastudios.com

Client
Castlefield International Limited

Project Title
TEVERSHAM ROAD FULBOURN

Drawing Series and Title
**Detail Plan
 PUMP HOUSE GARDEN**

Scale @ A1
 1:250

Drawn
 PC

Approved
 AS

Date
FEB 2020

Drawing Status
FOR PLANNING

Drawing number
TRF-CBA-1-GF-M2-L-2001

Revision
P1

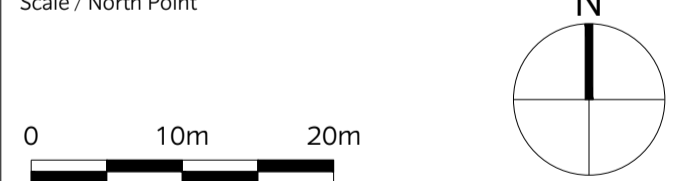


This document should not be relied on or used in circumstances other than those for which it was prepared and for which Chris Blandford Associates was commissioned. Chris Blandford Associates accepts no responsibility for this document to any other party other than the person by whom it was commissioned.

- KEY**
- Application boundary
 - Other Land Under Applicant's Control
 - Planting strategy - Open spaces
 - Existing vegetation
 - Existing trees to be retained
 - Proposed trees
 - Existing Woodland to be retained
 - Habitat retention/ translocation areas
Grasslands/Scrub mosaic + log piles
Hibernacula. Existing grassland/ scrub to be retained. For details refer to Ecologist details.
 - Existing landscape retained
Existing natural habitat/ grassland/ scrub to be retained. For details refer to Ecologist details.
 - Retained landscape with additional grass seed as required for making good
 - Proposed meadow
Product: Meadow Mixture EM2
Supplier: Emorsgate Seeds
 - Proposed wildflower mix
Product: EM6F - Meadow Mixture for chalk & limestone soils (alternative EM6)
Supplier: Emorsgate Seeds
 - Bio retention basins
Product: Flora Aqua
(70% Wildflowers and 30% Grasses)
Supplier: Tillers Turf
 - Proposed native buffer planting Type A
 - Proposed native buffer planting Type B
 - Proposed native plant mix
 - Proposed lawn: Lindum Festival Landscape Turf - LT7
 - Linear Park
Proposed planting
For detailed planting plan ref. dwg. 4017
 - Proposed flowering lawn
Product: Meadow Mixture EM2
Supplier: Emorsgate Seeds
 - Proposed aquatic / marginal planting
 - Planting strategy - around built areas
Proposed road verges
Product: Species Rich Lawn Turf
Product code: WFT Species-Rich-26
Supplier: Wildflower Turf Ltd
 - Shrubs and perennials
 - Proposed climbers

Note: For planting schedule refer to drg TRF-CBA-M2-L-4011
Note: Attenuation ponds to include bio retentive topsoil to control water flow rates, and reduce the environmental impact of flooding.

Rev	Date	Drw	Revision or reason for Issue
P8	12/04/21	AS	For Planning
P7	23/10/20	PC	Revised submission
P6	10/06/20	PC	Revised submission
P5	11/03/20	PC	Revised submission
P4	28/02/20	PC	Revised Reserved Matters Application
S0	08/11/19	SM	Stage 3 Issue
P3	13/09/19	SM	Issued For Planning
P2	11/09/19	SM	Issued For Planning
P1	06/09/19	SM	Issued For Planning
P0	23/08/19	MA	Issued For Planning
Rev	Date	Drw	Revision or reason for Issue



CHRIS BLANDFORD ASSOCIATES
landscape | environment | heritage
The Print Rooms Studio 511 164/180 Union St Waterloo London SE1 0LH
T +44 (0)20 7089 6480 E mail@cbastudios.com W www.cbastudios.com

Client
Castlefield International Limited

Project Title
TEVERSHAM ROAD FULBOURN

Drawing Series and Title
**4000 SERIES
Planting Strategy - SHEET 1**

Scale @ A1
1:500

Drawn
PC

Date
AUG 2019

Approved
RB

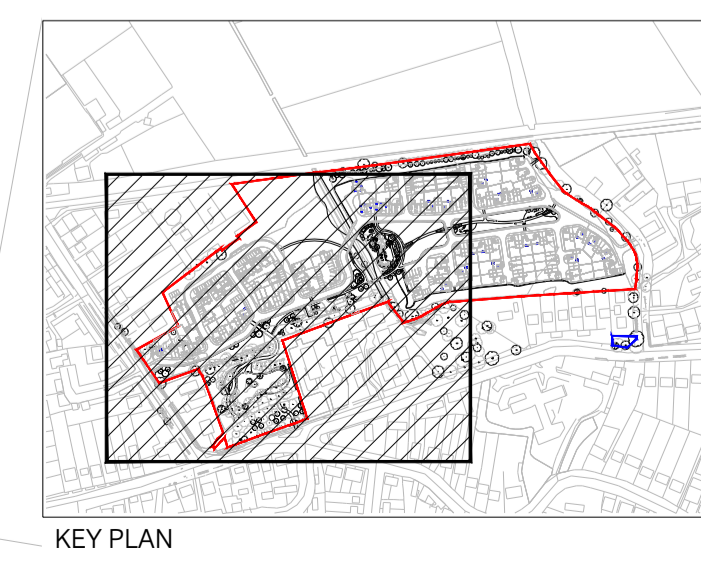
Drawing Status
FOR PLANNING

Drawing number
TRF-CBA-1-GF-M2-L-4000

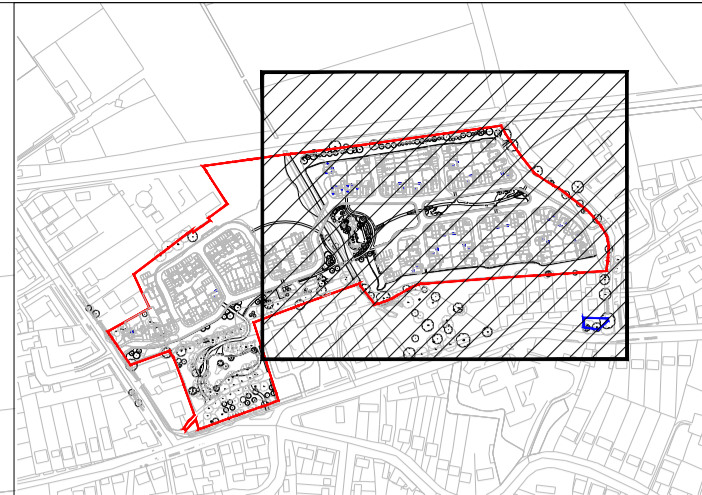
Revision
P8



- ⊗ Indicative location of control chamber to Engineer's details
- ⊏ Indicative location of headwall to Engineer's details
- Existing chalk cstream
- Existing pond



This document should not be relied on or used in circumstances other than those for which it was prepared and for which Chris Blandford Associates was commissioned. Chris Blandford Associates accepts no responsibility for this document to any other party other than the person by whom it was commissioned.



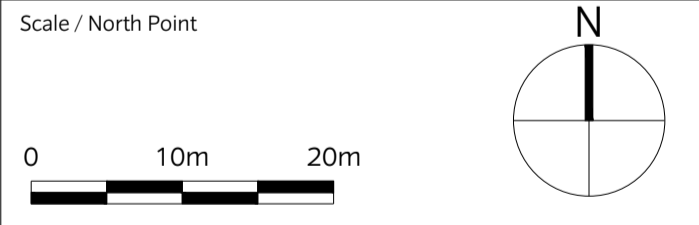
- KEY PLAN**
- Indicative location of control chamber to Engineer's details
 - Indicative location of headwall to Engineer's details
 - Existing chalk stream
 - Existing pond



- KEY**
- Application boundary
 - Other Land Under Applicant's Control
- Planting strategy - Open spaces**
- Existing vegetation
 - Existing trees to be retained
 - Proposed trees
 - Existing Woodland to be retained
 - Habitat retention/ translocation areas: Grasslands/Scrub mosaic + log piles, Hibernacula, Existing grassland/ scrub to be retained. For details refer to Ecologist details.
 - Existing landscape retained: Existing natural habitat/ grassland/ scrub to be retained. For details refer to Ecologist details.
 - Retained landscape with additional grass seed as required for making good
 - Proposed meadow: Product: Meadow Mixture EM2, Supplier: Emorsgate Seeds
 - Proposed wildflower mix: Product: EM6F - Meadow Mixture for chalk & limestone soils (alternative EM6), Supplier: Emorsgate Seeds
 - Bio retention basins: Product: Flora Aqua (70% Wildflowers and 30% Grasses), Supplier: Tillers Turf
 - Proposed native buffer planting Type A
 - Proposed native buffer planting Type B
 - Proposed native plant mix
 - Proposed lawn: Lindum Festival Landscape Turf - L17
 - Linear Park: Proposed planting. For detailed planting plan ref. dwg.4017
 - Proposed flowering lawn: Product: Meadow Mixture EM2, Supplier: Emorsgate Seeds
 - Proposed aquatic / marginal planting
- Planting strategy - around built areas**
- Proposed road verges: Product: Species Rich Lawn Turf, Product code: WFT-Species-Rich-26, Supplier: Wildflower Turf Ltd
 - Shrubs and perennials
 - Proposed climbers

Note: For planting schedule refer to drg TRF-CBA-M2-L-4011
 Note: Attenuation ponds to include bio retentive topsoil to control water flow rates, and reduce the environmental impact of flooding.

Rev	Date	Drw	Revision or reason for Issue
P8	12/04/21	AS	For Planning
P7	23/10/20	PC	Revised submission
P6	10/06/20	PC	Revised submission
P5	11/03/20	PC	Revised submission
P4	28/02/20	PC	Revised Reserved Matters Application
S0	08/11/19	SM	Stage 3 Issue
P3	13/09/19	SM	Issued For Planning
P2	11/09/19	SM	Issued For Planning
P1	06/09/19	SM	Issued For Planning
PO	23/08/19	MA	Issued For Planning



CHRIS BLANDFORD ASSOCIATES
 landscape | environment | heritage
 The Print Rooms Studio 511 164/180 Union St Waterloo London SE1 0LH
 T +44 (0)20 7089 6480 E mail@cbastudios.com W www.cbastudios.com

Client
Castlefield International Limited

Project Title
TEVERSHAM ROAD FULBOURN

Drawing Series and Title
**4000 SERIES
 Planting Strategy - SHEET 2**

Scale @ A1
 1:500

Drawn
 PC

Date
AUG 2019

Approved
 RB



Drawing Status
FOR PLANNING

Drawing number
TRF-CBA-1-GF-M2-L-4001

Revision
P8

This document should not be relied on or used in circumstances other than those for which it was prepared and for which Chris Blandford Associates was commissioned. Chris Blandford Associates accepts no responsibility for this document to any other party other than the person by whom it was commissioned.

KEY

	Application boundary
	Other Land Under Applicant's Control



Rev	Date	Drw	Revision or reason for Issue
P3	12/04/21	AS	For Planning
P2	16/03/20	PC	Revised submission
P1	02/03/20	PC	Revised Reserved Matters Application
SO	08/11/19	MA	Stage 3 Issue
PO	13/09/19	SM	Issued For Planning

Scale / North Point

Scale / North Point		

CHRIS BLANDFORD ASSOCIATES
 landscape | environment | heritage
 The Print Rooms Studio 511 164/180 Union St Waterloo London SE1 0LH
 T +44 (0)20 7089 6480 E mail@cbastudios.com W www.cbastudios.com

Client
Castlefield International Limited

Project Title
TEVERSHAM ROAD FULBOURN

Drawing Series and Title
**4000 SERIES
 Planting Key Plan**

Scale @ A1 1:750	Drawn PC	Date SEP 2019
	Approved AS	Drawing Status FOR PLANNING

Drawing number
TRF-CBA-1-GF-M2-L-4010

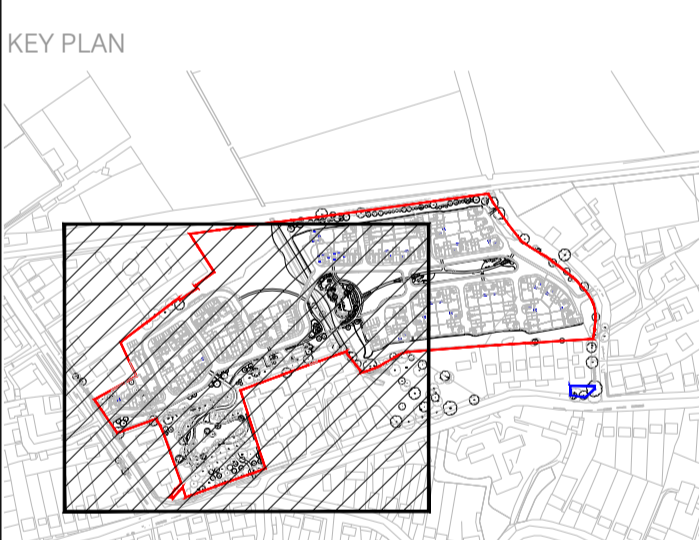
Revision
P3

This document should not be relied on or used in circumstances other than those for which it was prepared and for which Chris Blandford Associates was commissioned. Chris Blandford Associates accepts no responsibility for this document to any other party other than the person by whom it was commissioned.

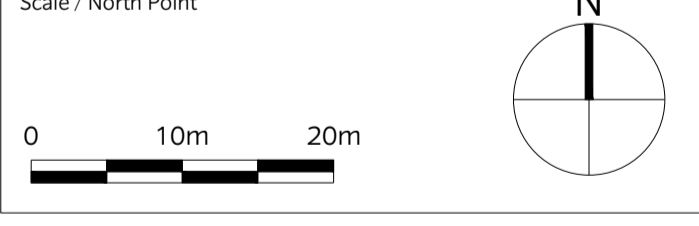
- KEY**
- Site boundary
 - Other Land Under Applicant's Control
 - Existing trees to be retained
 - Proposed trees
 - Proposed Meadow Area - 1175 m²
 - Proposed native buffer planting
 - Proposed native tree / shrub mix
 - Proposed aquatic / marginal planting Area : 500 m² approx.
For list of proposed species, refer to Planting strategy drawings: TRF-CBA-1-GF-M2-L-4000 & TRF-CBA-1-GF-M2-L-4001

NOTE:

- For informal play & LEAP planting plans refer to drawing TRF-CBA-1-GF-M2-L-4017
- For overall planting schedule refer to drawing TRF-CBA-1-GF-M2-L-4011



P4	12/04/21	PC	Revised submission
P3	23/10/20	PC	Revised submission
P2	23/06/20	PC	Revised submission
P1	02/03/20	PC	Revised Reserved Matters Application
SO	08/11/19	SM	Stage 3 Issue
PO	13/09/19	SM	Issued For Planning
Rev	Date	Drw	Revision or reason for Issue



CHRIS BLANDFORD ASSOCIATES
 landscape | environment | heritage
 The Print Rooms Studio 511 164/180 Union St Waterloo London SE1 0LH
 T +44 (0)20 7089 6480 E mail@cbastudios.com W www.cbastudios.com

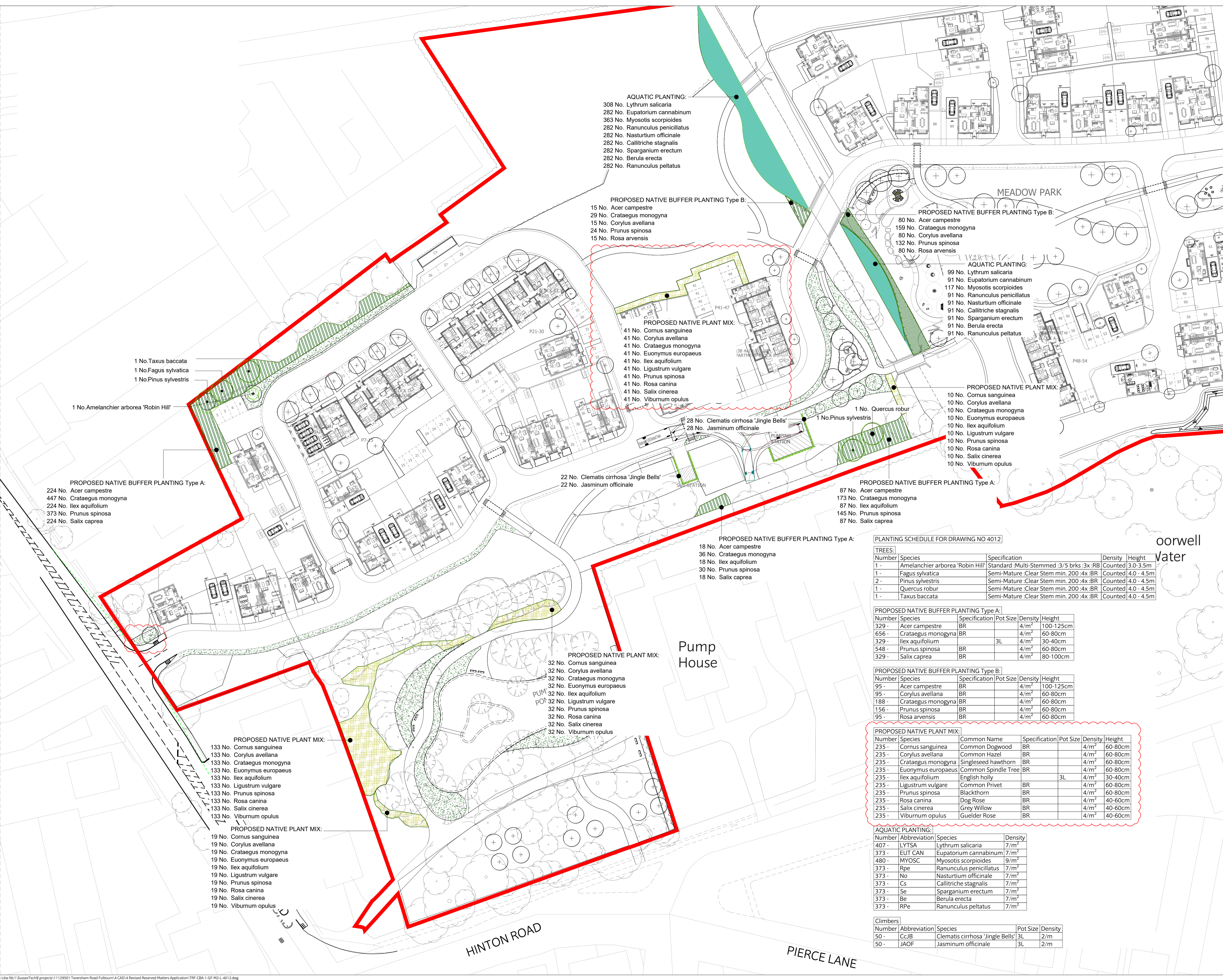
Client
Castlefield International Limited

Project Title
TEVERSHAM ROAD FULBOURN

Drawing Series and Title
4000 SERIES
Planting Plan Sheet 1 of 6

Scale @ A1
 1:500
 Drawn
 PC
 Approved
 RB
 Date
 SEP 2019
 Drawing Status
FOR PLANNING

Drawing number
TRF-CBA-1-GF-M2-L-4012
 Revision
P4



- AQUATIC PLANTING:**
- 308 No. Lythrum salicaria
 - 282 No. Eupatorium cannabinum
 - 363 No. Myosotis scorpioides
 - 282 No. Ranunculus penicillatus
 - 282 No. Nasturtium officinale
 - 282 No. Callitriche stagnalis
 - 282 No. Sparganium erectum
 - 282 No. Berula erecta
 - 282 No. Ranunculus peltatus

- PROPOSED NATIVE BUFFER PLANTING Type B:**
- 15 No. Acer campestre
 - 29 No. Crataegus monogyna
 - 15 No. Corylus avellana
 - 24 No. Prunus spinosa
 - 15 No. Rosa arvensis

- PROPOSED NATIVE PLANT MIX:**
- 41 No. Cornus sanguinea
 - 41 No. Corylus avellana
 - 41 No. Crataegus monogyna
 - 41 No. Euonymus europaeus
 - 41 No. Ilex aquifolium
 - 41 No. Ligustrum vulgare
 - 41 No. Prunus spinosa
 - 41 No. Rosa canina
 - 41 No. Salix cinerea
 - 41 No. Viburnum opulus

- PROPOSED NATIVE BUFFER PLANTING Type B:**
- 80 No. Acer campestre
 - 159 No. Crataegus monogyna
 - 80 No. Corylus avellana
 - 132 No. Prunus spinosa
 - 80 No. Rosa arvensis

- AQUATIC PLANTING:**
- 99 No. Lythrum salicaria
 - 91 No. Eupatorium cannabinum
 - 117 No. Myosotis scorpioides
 - 91 No. Ranunculus penicillatus
 - 91 No. Nasturtium officinale
 - 91 No. Callitriche stagnalis
 - 91 No. Sparganium erectum
 - 91 No. Berula erecta
 - 91 No. Ranunculus peltatus

- PROPOSED NATIVE PLANT MIX:**
- 10 No. Cornus sanguinea
 - 10 No. Corylus avellana
 - 10 No. Crataegus monogyna
 - 10 No. Euonymus europaeus
 - 10 No. Ilex aquifolium
 - 10 No. Ligustrum vulgare
 - 10 No. Prunus spinosa
 - 10 No. Rosa canina
 - 10 No. Salix cinerea
 - 10 No. Viburnum opulus

- 1 No. Taxus baccata
- 1 No. Fagus sylvatica
- 1 No. Pinus sylvestris

1 No. Amelanchier arborea 'Robin Hill'

- PROPOSED NATIVE BUFFER PLANTING Type A:**
- 224 No. Acer campestre
 - 447 No. Crataegus monogyna
 - 224 No. Ilex aquifolium
 - 373 No. Prunus spinosa
 - 224 No. Salix caprea

- 22 No. Clematis cirrhosa 'Jingle Bells'
- 22 No. Jasminum officinale

- PROPOSED NATIVE BUFFER PLANTING Type A:**
- 18 No. Acer campestre
 - 36 No. Crataegus monogyna
 - 18 No. Ilex aquifolium
 - 30 No. Prunus spinosa
 - 18 No. Salix caprea

- PROPOSED NATIVE PLANT MIX:**
- 32 No. Cornus sanguinea
 - 32 No. Corylus avellana
 - 32 No. Crataegus monogyna
 - 32 No. Euonymus europaeus
 - 32 No. Ilex aquifolium
 - 32 No. Ligustrum vulgare
 - 32 No. Prunus spinosa
 - 32 No. Rosa canina
 - 32 No. Salix cinerea
 - 32 No. Viburnum opulus

- PROPOSED NATIVE PLANT MIX:**
- 133 No. Cornus sanguinea
 - 133 No. Corylus avellana
 - 133 No. Crataegus monogyna
 - 133 No. Euonymus europaeus
 - 133 No. Ilex aquifolium
 - 133 No. Ligustrum vulgare
 - 133 No. Prunus spinosa
 - 133 No. Rosa canina
 - 133 No. Salix cinerea
 - 133 No. Viburnum opulus

- PROPOSED NATIVE PLANT MIX:**
- 19 No. Cornus sanguinea
 - 19 No. Corylus avellana
 - 19 No. Crataegus monogyna
 - 19 No. Euonymus europaeus
 - 19 No. Ilex aquifolium
 - 19 No. Ligustrum vulgare
 - 19 No. Prunus spinosa
 - 19 No. Rosa canina
 - 19 No. Salix cinerea
 - 19 No. Viburnum opulus

PLANTING SCHEDULE FOR DRAWING NO 4012

TREES:					
Number	Species	Specification	Density	Height	
1-	Amelanchier arborea 'Robin Hill'	Standard-Multi-Stemmed :3/5 brks :3x :RB	Counted	3.0-3.5m	
1-	Fagus sylvatica	Semi-Mature :Clear Stem min. 200 :4x :BR	Counted	4.0 - 4.5m	
2-	Pinus sylvestris	Semi-Mature :Clear Stem min. 200 :4x :BR	Counted	4.0 - 4.5m	
1-	Quercus robur	Semi-Mature :Clear Stem min. 200 :4x :BR	Counted	4.0 - 4.5m	
1-	Taxus baccata	Semi-Mature :Clear Stem min. 200 :4x :BR	Counted	4.0 - 4.5m	

PROPOSED NATIVE BUFFER PLANTING Type A:

Number	Species	Specification	Pot Size	Density	Height
329-	Acer campestre	BR		4/m ²	100-125cm
656-	Crataegus monogyna	BR		4/m ²	60-80cm
329-	Ilex aquifolium		3L	4/m ²	30-40cm
548-	Prunus spinosa	BR		4/m ²	60-80cm
329-	Salix caprea	BR		4/m ²	80-100cm

PROPOSED NATIVE BUFFER PLANTING Type B:

Number	Species	Specification	Pot Size	Density	Height
95-	Acer campestre	BR		4/m ²	100-125cm
95-	Corylus avellana	BR		4/m ²	60-80cm
188-	Crataegus monogyna	BR		4/m ²	60-80cm
156-	Prunus spinosa	BR		4/m ²	60-80cm
95-	Rosa arvensis	BR		4/m ²	60-80cm

PROPOSED NATIVE PLANT MIX:

Number	Species	Common Name	Specification	Pot Size	Density	Height
235-	Cornus sanguinea	Common Dogwood	BR		4/m ²	60-80cm
235-	Corylus avellana	Common Hazel	BR		4/m ²	60-80cm
235-	Crataegus monogyna	Singleseed hawthorn	BR		4/m ²	60-80cm
235-	Euonymus europaeus	Common Spindle Tree	BR		4/m ²	60-80cm
235-	Ilex aquifolium	English holly		3L	4/m ²	30-40cm
235-	Ligustrum vulgare	Common Privet	BR		4/m ²	60-80cm
235-	Prunus spinosa	Blackthorn	BR		4/m ²	60-80cm
235-	Rosa canina	Dog Rose	BR		4/m ²	40-60cm
235-	Salix cinerea	Grey Willow	BR		4/m ²	40-60cm
235-	Viburnum opulus	Gelder Rose	BR		4/m ²	40-60cm

AQUATIC PLANTING:

Number	Abbreviation	Species	Density
407-	LYTSA	Lythrum salicaria	7/m ²
373-	EUT CAN	Eupatorium cannabinum	7/m ²
480-	MYOSC	Myosotis scorpioides	9/m ²
373-	Rpe	Ranunculus penicillatus	7/m ²
373-	No	Nasturtium officinale	7/m ²
373-	Cs	Callitriche stagnalis	7/m ²
373-	Se	Sparganium erectum	7/m ²
373-	Be	Berula erecta	7/m ²
373-	RPe	Ranunculus peltatus	7/m ²

Climbers:

Number	Abbreviation	Species	Pot Size	Density
50-	CcJB	Clematis cirrhosa 'Jingle Bells'	3L	2/m
50-	JAOF	Jasminum officinale	3L	2/m