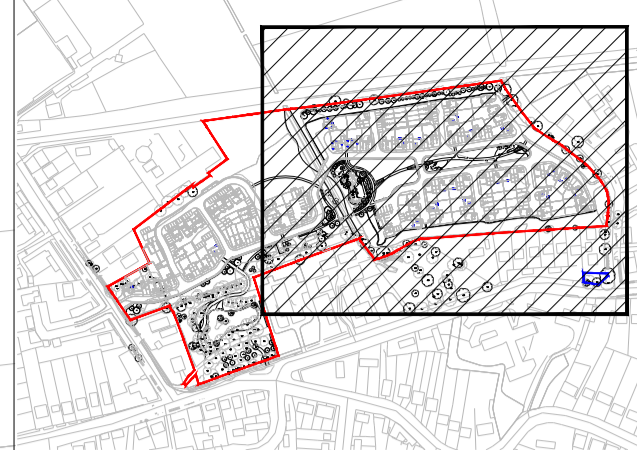


This document should not be relied on or used in circumstances other than those for which it was prepared and for which Chris Blandford Associates was commissioned. Chris Blandford Associates accepts no responsibility for this document to any other party other than the person by whom it was commissioned.



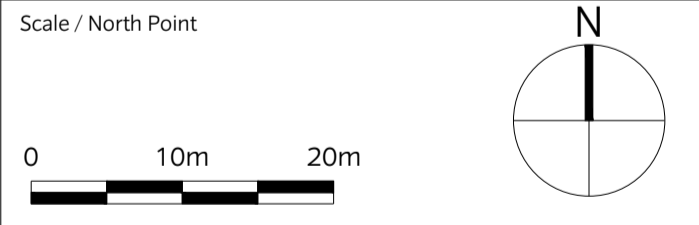
- KEY PLAN**
- Indicative location of control chamber to Engineer's details
 - Indicative location of headwall to Engineer's details
 - Existing chalk stream
 - Existing pond



- KEY**
- Application boundary
 - Other Land Under Applicant's Control
- Planting strategy - Open spaces**
- Existing vegetation
 - Existing trees to be retained
 - Proposed trees
 - Existing Woodland to be retained
 - Habitat retention/ translocation areas: Grasslands/Scrub mosaic + log piles, Hibernacula, Existing grassland/ scrub to be retained. For details refer to Ecologist details.
 - Existing landscape retained: Existing natural habitat/ grassland/ scrub to be retained. For details refer to Ecologist details.
 - Retained landscape with additional grass seed as required for making good
 - Proposed meadow: Product: Meadow Mixture EM2, Supplier: Emorsgate Seeds
 - Proposed wildflower mix: Product: EM6F - Meadow Mixture for chalk & limestone soils (alternative EM6), Supplier: Emorsgate Seeds
 - Bio retention basins: Product: Flora Aqua (70% Wildflowers and 30% Grasses), Supplier: Tillers Turf
 - Proposed native buffer planting Type A
 - Proposed native buffer planting Type B
 - Proposed native plant mix
 - Proposed lawn: Lindum Festival Landscape Turf - L17
 - Linear Park: Proposed planting. For detailed planting plan ref. dwg.4017
 - Proposed flowering lawn: Product: Meadow Mixture EM2, Supplier: Emorsgate Seeds
 - Proposed aquatic / marginal planting
- Planting strategy - around built areas**
- Proposed road verges: Product: Species Rich Lawn Turf, Product code: WFT-Species-Rich-26, Supplier: Wildflower Turf Ltd
 - Shrubs and perennials
 - Proposed climbers

Note: For planting schedule refer to drg TRF-CBA-M2-L-4011
 Note: Attenuation ponds to include bio retentive topsoil to control water flow rates, and reduce the environmental impact of flooding.

Rev	Date	Drw	Revision or reason for Issue
P8	12/04/21	AS	For Planning
P7	23/10/20	PC	Revised submission
P6	10/06/20	PC	Revised submission
P5	11/03/20	PC	Revised submission
P4	28/02/20	PC	Revised Reserved Matters Application
S0	08/11/19	SM	Stage 3 Issue
P3	13/09/19	SM	Issued For Planning
P2	11/09/19	SM	Issued For Planning
P1	06/09/19	SM	Issued For Planning
PO	23/08/19	MA	Issued For Planning



CHRIS BLANDFORD ASSOCIATES
 landscape | environment | heritage
 The Print Rooms Studio 511 164/180 Union St Waterloo London SE1 0LH
 T +44 (0)20 7089 6480 E mail@cbastudios.com W www.cbastudios.com

Client
Castlefield International Limited

Project Title
TEVERSHAM ROAD FULBOURN

Drawing Series and Title
**4000 SERIES
 Planting Strategy - SHEET 2**

Scale @ A1
 1:500
 Drawn
 PC
 Approved
 RB
 Date
 AUG 2019
 Drawing Status
FOR PLANNING

Drawing number
TRF-CBA-1-GF-M2-L-4001
 Revision
P8