

PLANTING SCHEDULE FOR DRAWING NO 4013

PROPOSED NATIVE PLANT MIX:

Number	Species	Specification	Density	Height
245	Cornus sanguinea	BR	4/m ²	60-80cm
245	Corylus avellana	BR	4/m ²	60-80cm
245	Crataegus monogyna	BR	4/m ²	60-80cm
245	Euonymus europaeus	BR	4/m ²	60-80cm
245	Ilex aquifolium	BR	4/m ²	30-40cm
245	Ligustrum vulgare	BR	4/m ²	60-80cm
245	Prunus spinosa	BR	4/m ²	60-80cm
245	Rosa canina	BR	4/m ²	40-60cm
245	Salix cinerea	BR	4/m ²	40-60cm
245	Viburnum opulus	BR	4/m ²	40-60cm

PROPOSED NATIVE BUFFER PLANTING Type A:

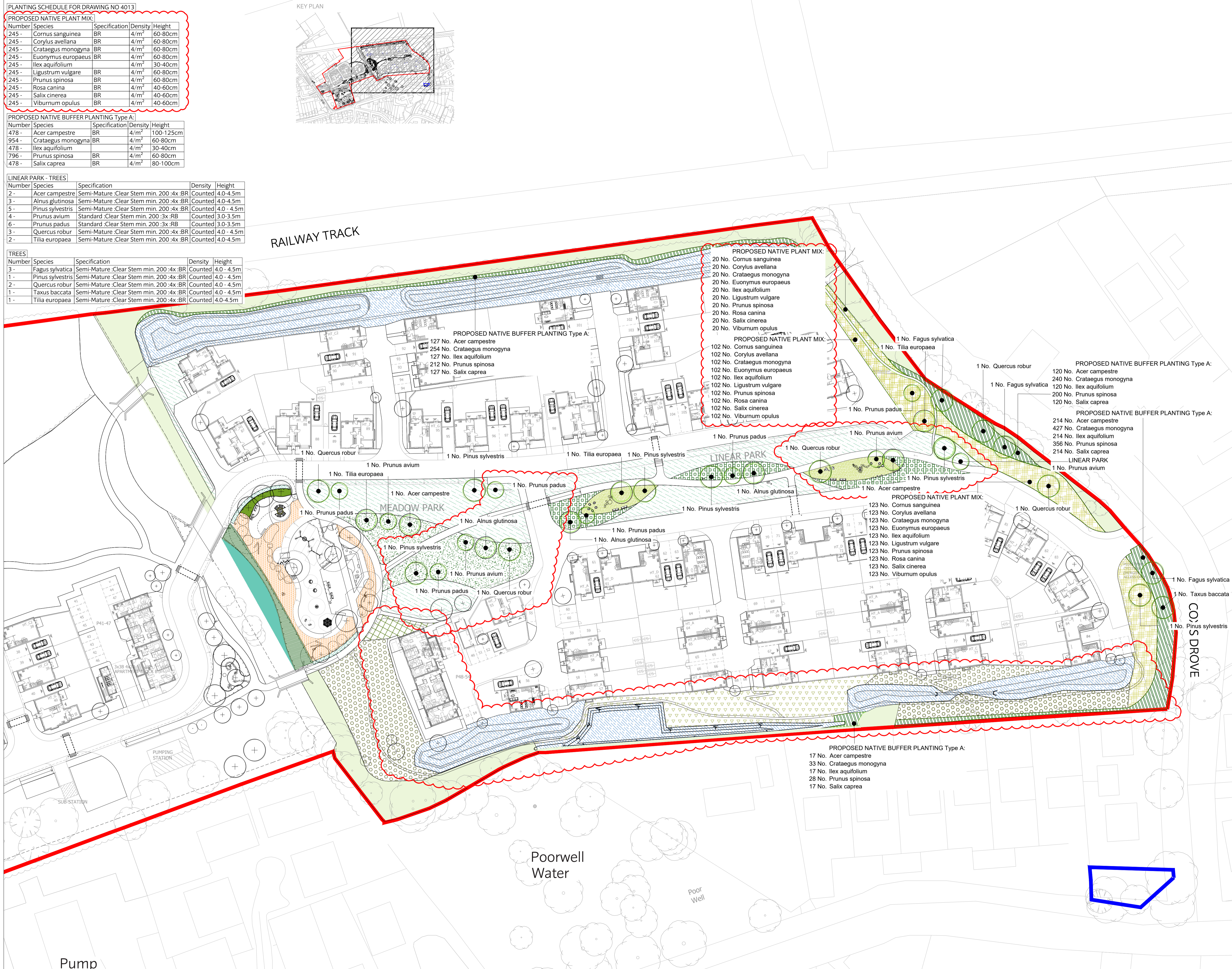
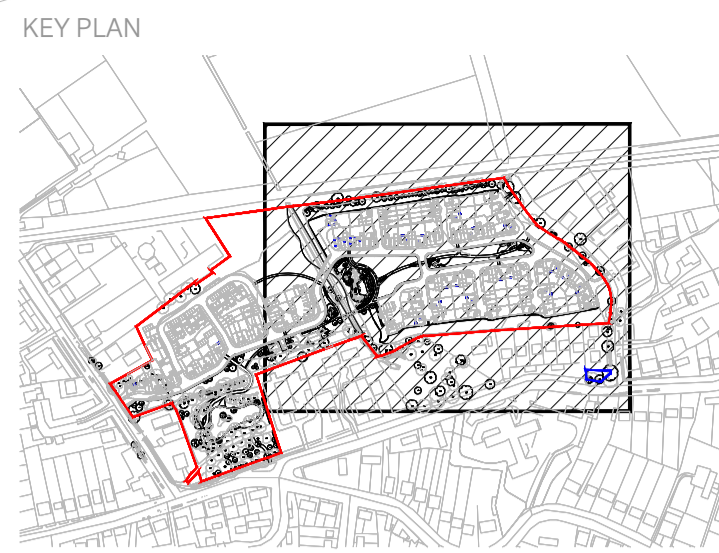
Number	Species	Specification	Density	Height
478	Acer campestre	BR	4/m ²	100-125cm
954	Crataegus monogyna	BR	4/m ²	60-80cm
478	Ilex aquifolium	BR	4/m ²	30-40cm
796	Prunus spinosa	BR	4/m ²	60-80cm
478	Salix caprea	BR	4/m ²	80-100cm

LINEAR PARK - TREES

Number	Species	Specification	Density	Height
2	Acer campestre	Semi-Mature :Clear Stem min. 200 :4x :BR	Counted	4.0-4.5m
3	Alnus glutinosa	Semi-Mature :Clear Stem min. 200 :4x :BR	Counted	4.0-4.5m
5	Pinus sylvestris	Semi-Mature :Clear Stem min. 200 :4x :BR	Counted	4.0-4.5m
4	Prunus avium	Standard :Clear Stem min. 200 :3x :RB	Counted	3.0-3.5m
6	Prunus padus	Standard :Clear Stem min. 200 :3x :RB	Counted	3.0-3.5m
3	Quercus robur	Semi-Mature :Clear Stem min. 200 :4x :BR	Counted	4.0-4.5m
2	Tilia europaea	Semi-Mature :Clear Stem min. 200 :4x :BR	Counted	4.0-4.5m

TREES

Number	Species	Specification	Density	Height
3	Fagus sylvatica	Semi-Mature :Clear Stem min. 200 :4x :BR	Counted	4.0-4.5m
1	Pinus sylvestris	Semi-Mature :Clear Stem min. 200 :4x :BR	Counted	4.0-4.5m
2	Quercus robur	Semi-Mature :Clear Stem min. 200 :4x :BR	Counted	4.0-4.5m
1	Taxus baccata	Semi-Mature :Clear Stem min. 200 :4x :BR	Counted	4.0-4.5m
1	Tilia europaea	Semi-Mature :Clear Stem min. 200 :4x :BR	Counted	4.0-4.5m



This document should not be relied on or used in circumstances other than those for which it was prepared and for which Chris Blandford Associates was commissioned. Chris Blandford Associates accepts no responsibility for this document to any other party other than the person by whom it was commissioned.

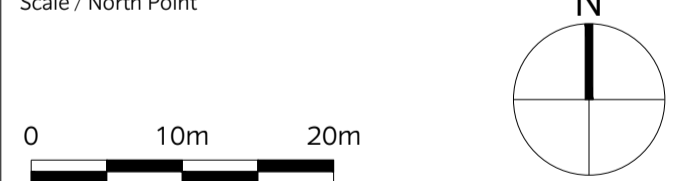
KEY

- Application boundary
- Other Land Under Applicant's Control
- Planting strategy - Open spaces
- Existing vegetation
- Existing trees to be retained
- Proposed trees
- Existing Woodland to be retained
- Habitat retention/ translocation areas
- Existing landscape retained
- Retained landscape with additional grass seed as required for making good
- Proposed meadow
- Proposed wildflower mix
- Bio retention basins
- Proposed native buffer planting Type A
- Proposed native buffer planting Type B
- Proposed native plant mix
- Proposed lawn: Lindrum Festival Landscape Turf - LT7
- Linear Park
- Proposed flowering lawn
- Proposed aquatic / marginal planting
- Planting strategy - around built areas
- Proposed road verges
- Private front gardens
- Proposed hedge
- Proposed climbers

NOTE:

- For informal play & LEAP planting plans refer to drawing TRF-CBA-1-GF-M2-L-4017
- For overall planting schedule refer to drawing TRF-CBA-1-GF-M2-L-4011

Rev	Date	Drw	Issued For Planning
P4	12/04/21	PC	Revised submission
P3	23/06/20	PC	Revised submission
P2	13/03/20	PC	Revised submission
P1	02/03/20	PC	Revised Reserved Matters Application
SO	08/11/19	SM	Stage 3 Issue
PO	13/09/19	SM	Issued For Planning



CHRIS BLANDFORD ASSOCIATES
 landscape | environment | heritage
 The Print Rooms Studio 511 164/180 Union St Waterloo London SE1 0LH
 T +44 (0)20 7089 6480 E mail@cbastudios.com W www.cbastudios.com

Client
Castlefield International Limited

Project Title
TEVERSHAM ROAD FULBORN

Drawing Series and Title
4000 SERIES
Planting Plan Sheet 2 of 6

Scale @ A1
 1:500
 Drawn
 Pc
 Approved
 AS
 Date
 SEP 2019
 Drawing Status
FOR PLANNING

Drawing number
TRF-CBA-1-GF-M2-L-4013
 Revision
P4