

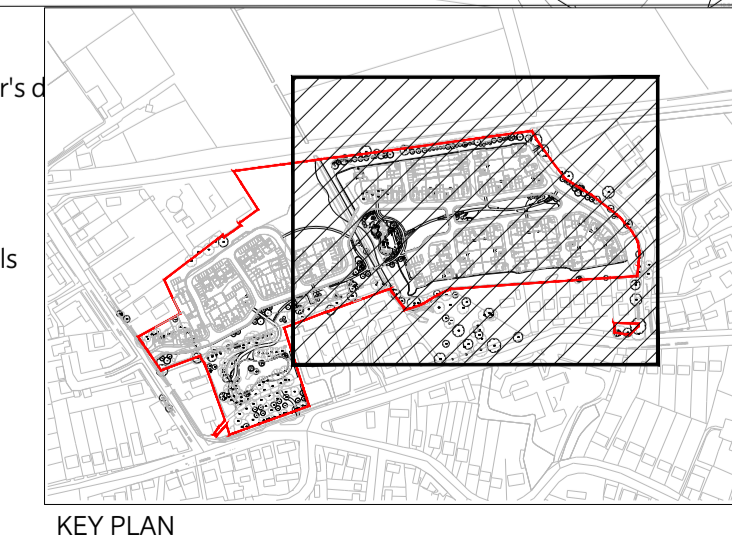
This document should not be relied on or used in circumstances other than those for which it was prepared and for which Chris Blandford Associates was commissioned. Chris Blandford Associates accepts no responsibility for this document to any other party other than the person by whom it was commissioned.

- KEY**
- Site / Application boundary
 - Planting strategy - Open spaces**
 - Existing vegetation
 - Existing trees to be retained
 - Proposed trees
 - Existing Woodland to be retained
 - Habitat retention/ translocation areas
Grasslands/Scrub mosaic + log piles
Hibernacula. Existing grassland/ scrub to be retained. For details refer to Reptile Mitigation Strategy report by ecologist.
 - Existing landscape retained
Existing natural habitat/ grassland/ scrub to be retained. For details refer to Ecologist details.
 - Retained landscape with additional grassland/ scrub mosaic planting as required
 - Proposed Meadow
Product: Emorsgate Seeds' EM2 standard general purpose meadow mix
Supplier: Emorsgate seeds
 - Bio retention basins
Product: Flora Aqua (70% Wildflowers and 30% Grasses)
Supplier: Tillers Turf
 - Proposed native buffer planting
 - Blackthorn (*Prunus spinosa*)
 - Field maple (*Acer campestre*)
 - Goat willow (*Salix caprea*)
 - Hawthorn (*Crataegus monogyna*)
 - Holly (*Ilex aquifolium*)
 - Proposed native tree / shrub mix
 - *Cornus sanguinea*
 - *Corylus avellana*
 - *Crataegus monogyna*
 - *Eucryphia europaea*
 - *Ilex aquifolium*
 - *Ligustrum vulgare*
 - *Prunus spinosa*
 - *Rosa canina*
 - *Salix cinerea*
 - Proposed ornamental shrub planting / lawn
(For Play areas and landscaped open spaces)
 - HEDGE**
 - Field maple (*Acer campestre*)
 - Ninebark 'Diabolo' (*Physocarpus opulifolius 'Diabolo'*)
 - Ninebark 'Luteus' (*Physocarpus opulifolius 'Luteus'*)
 - Wilds privet (*Ligustrum vulgare*)
 - SHRUB & HERBACEOUS**
 - Corkscrew rush (*Juncus effusus*)
 - Lavender (*Lavandula intermedia 'Grosso'*)
 - Mock Orange (*Philadelphus coronarius*)
 - *Pachysandra terminalis 'Green Carpet'* (Japanese spurge)
 - Rose (*Rosa 'Canary Bird'*)
 - Spindle (*Euonymus europaeus*)
 - Yellow iris (*Iris pseudocorus*)
 - LAWN**
 - Lindum Festival Landscape Turf - LT7

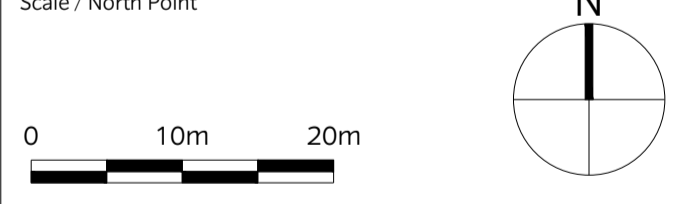


Indicative Swale
Indicative Water Edge
For LEAP planting strategy refer to drawing TRF-CBA-1-GF-M2-L-2000

- Proposed aquatic / marginal planting
 - Stream water crowfoot (*Ranunculus penicillatus*)
 - Brook water crowfoot (*R. peltatus*)
 - Watercress (*Nasturtium officinale*)
 - Common Water-starwort (*Callitriche stagnalis*)
 - Purple loosestrife (*Lythrum salicaria*)
 - Hemp agrimony (*Eupatorium cannabinum*)
 - Water forget-me-not (*Myosotis scorpioides*)
 - Branched bur-reed (*Sparganium erectum*)
 - Lesser water-parsnip (*Berula erecta*)
- Planting strategy - around built areas**
 - Proposed Road verges
Product: Species Rich Lawn Turf
Product code : WFT-Species-Rich-26
Supplier : Wildflower Turf Ltd
 - Private Front gardens (Hedge, shrubs & lawn)
 - HEDGE**
 - Cherry Laurel 'Otto Luyken' (*Prunus laurocerasus 'Otto Luyken'*)
 - Red Tip Photinia (*Photinia fraseri 'Red Robin'*)
 - SHRUBS & HERBACEOUS**
 - English lavender (*Lavandula angustifolia 'Hidcote'*)
 - Garden Sage (*Salvia nemorosa 'May Night'*)
 - Great wood-rush (*Luzula sylvatica*)
 - Hebe Mrs Winder
 - Purple cranesbill (*Geranium magnificum*)
 - Yellow iris (*Iris pseudocorus*)
 - LAWN**
 - Product: Premium grade turf
- Indicative location of control chamber to Engineer's details
- Indicative location of below ground crates
- Indicative location of headwall to Engineer's details
- Existing Chalk Stream
- Existing Pond



P3	13/09/19	SM	Issued for Planning
P2	11/09/19	SM	Issued for Planning
P1	06/09/19	SM	Issued for Planning
PO	23/08/19	MA	Issued for Planning
Rev	Date	Drw	Revision or reason for Issue



CHRIS BLANDFORD ASSOCIATES
landscape | environment | heritage
The Print Rooms Studio 511 164/180 Union St Waterloo London SE1 0LH
T +44 (0)20 7089 6480 E mail@cbastudios.com W www.cbastudios.com

Client
Castlefield International Limited

Project Title
TEVERSHAM ROAD FULBOURN

Drawing Series and Title
**4000 SERIES
Planting Strategy - SHEET 2**

Scale @ A1
1:500

Drawn
MA

Approved
RB

Date
AUG 2019

Drawing Status
FOR PLANNING

Drawing number
TRF-CBA-1-GF-M2-L-4001

Revision
P3