

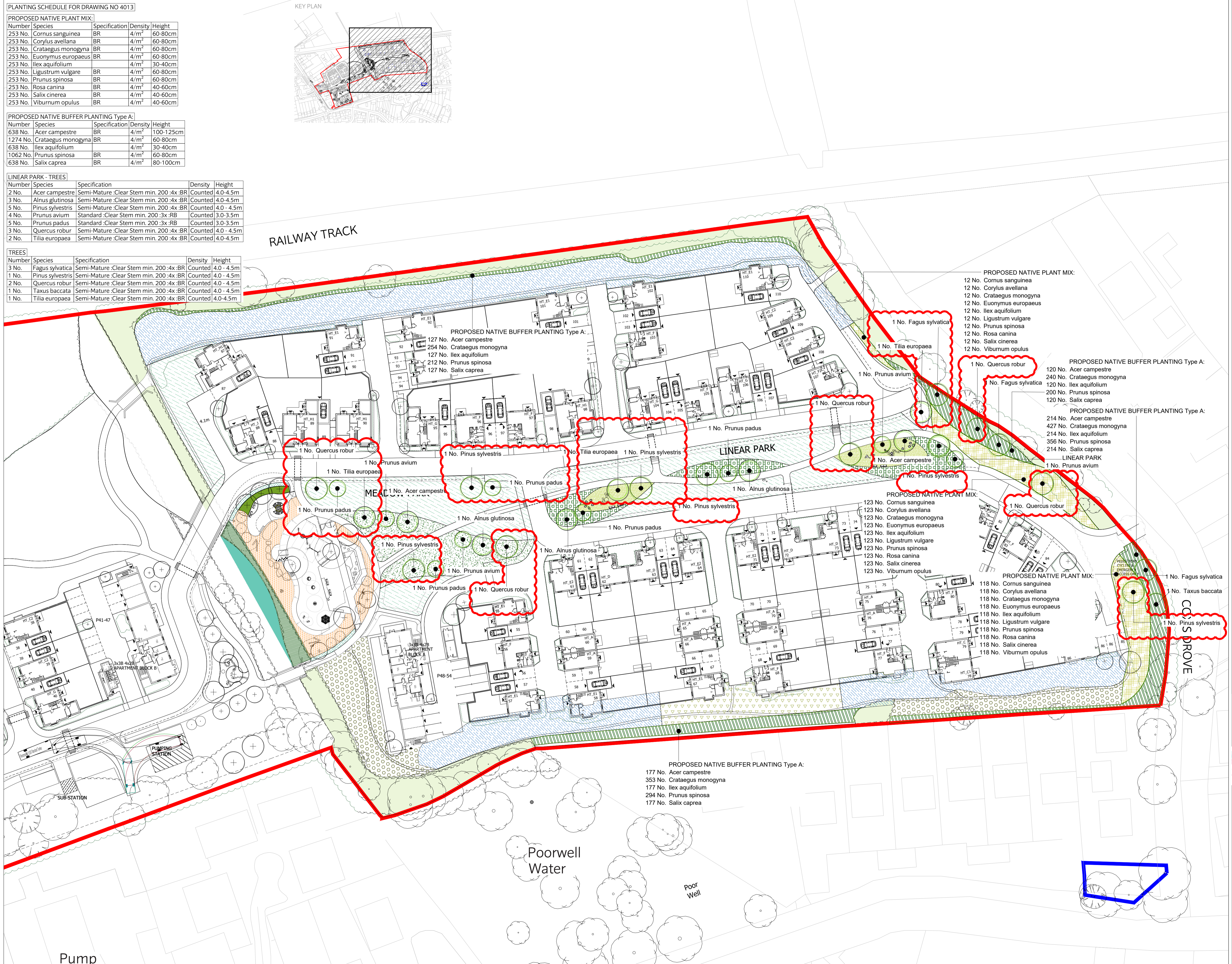
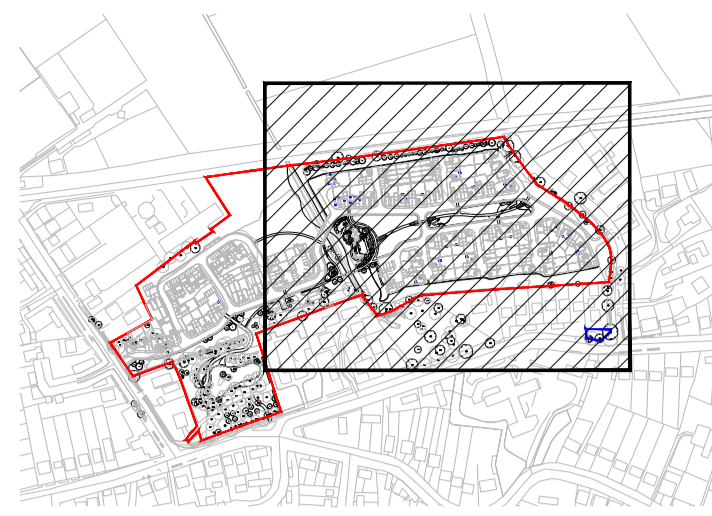
Number	Species	Specification	Density	Height
253 No.	Cornus sanguinea	BR	4/m ²	60-80cm
253 No.	Corylus avellana	BR	4/m ²	60-80cm
253 No.	Crataegus monogyna	BR	4/m ²	60-80cm
253 No.	Euonymus europaeus	BR	4/m ²	60-80cm
253 No.	Ilex aquifolium	BR	4/m ²	30-40cm
253 No.	Ligustrum vulgare	BR	4/m ²	60-80cm
253 No.	Prunus spinosa	BR	4/m ²	60-80cm
253 No.	Rosa canina	BR	4/m ²	40-60cm
253 No.	Salix cinerea	BR	4/m ²	40-60cm
253 No.	Viburnum opulus	BR	4/m ²	40-60cm

Number	Species	Specification	Density	Height
638 No.	Acer campestre	BR	4/m ²	100-125cm
1274 No.	Crataegus monogyna	BR	4/m ²	60-80cm
638 No.	Ilex aquifolium	BR	4/m ²	30-40cm
1062 No.	Prunus spinosa	BR	4/m ²	60-80cm
638 No.	Salix caprea	BR	4/m ²	80-100cm

Number	Species	Specification	Density	Height
2 No.	Acer campestre	Semi-Mature :Clear Stem min. 200 :4x :BR	Counted	4.0-4.5m
3 No.	Alnus glutinosa	Semi-Mature :Clear Stem min. 200 :4x :BR	Counted	4.0-4.5m
5 No.	Pinus sylvestris	Semi-Mature :Clear Stem min. 200 :4x :BR	Counted	4.0-4.5m
4 No.	Prunus avium	Standard :Clear Stem min. 200 :3x :RB	Counted	3.0-3.5m
5 No.	Prunus padus	Standard :Clear Stem min. 200 :3x :RB	Counted	3.0-3.5m
3 No.	Quercus robur	Semi-Mature :Clear Stem min. 200 :4x :BR	Counted	4.0-4.5m
2 No.	Tilia europaea	Semi-Mature :Clear Stem min. 200 :4x :BR	Counted	4.0-4.5m

Number	Species	Specification	Density	Height
3 No.	Fagus sylvatica	Semi-Mature :Clear Stem min. 200 :4x :BR	Counted	4.0-4.5m
1 No.	Pinus sylvestris	Semi-Mature :Clear Stem min. 200 :4x :BR	Counted	4.0-4.5m
2 No.	Quercus robur	Semi-Mature :Clear Stem min. 200 :4x :BR	Counted	4.0-4.5m
1 No.	Taxus baccata	Semi-Mature :Clear Stem min. 200 :4x :BR	Counted	4.0-4.5m
1 No.	Tilia europaea	Semi-Mature :Clear Stem min. 200 :4x :BR	Counted	4.0-4.5m

KEY PLAN



This document should not be relied on or used in circumstances other than those for which it was prepared and for which Chris Blandford Associates was commissioned. Chris Blandford Associates accepts no responsibility for this document to any other party other than the person by whom it was commissioned.

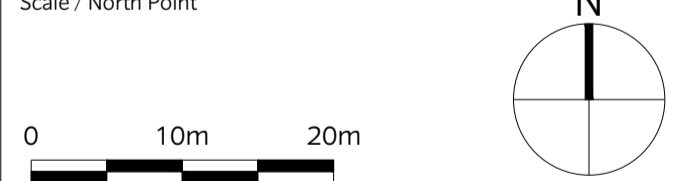
KEY

- Application boundary
- Other Land Under Applicant's Control
- Planting strategy - Open spaces
- Existing vegetation
- Existing trees to be retained
- Proposed trees
- Existing Woodland to be retained
- Habitat retention/ translocation areas
- Existing landscape retained
- Retained landscape with additional grass seed as required for making good
- Proposed meadow
- Proposed wildflower mix
- Bio retention basins
- Proposed native buffer planting Type A
- Proposed native buffer planting Type B
- Proposed native plant mix
- Proposed lawn: Lindrum Festival Landscape Turf - LT7
- Linear Park
- Proposed flowering lawn
- Proposed aquatic / marginal planting
- Planting strategy - around built areas
- Proposed road verges
- Private front gardens
- Proposed hedge
- Proposed climbers

NOTE:

- For informal play & LEAP planting plans refer to drawing TRF-CBA-1-GF-M2-L-4017
- For overall planting schedule refer to drawing TRF-CBA-1-GF-M2-L-4011

Rev	Date	Drw	Revision or reason for Issue
P3	23/06/20	PC	Revised submission
P2	13/03/20	PC	Revised submission
P1	02/03/20	PC	Revised Reserved Matters Application
SO	08/11/19	SM	Stage 3 Issue
PO	13/09/19	SM	Issued For Planning



CHRIS BLANDFORD ASSOCIATES
 landscape | environment | heritage
 The Print Rooms Studio 511 164/180 Union St Waterloo London SE1 0LH
 T +44 (0)20 7089 6480 E mail@cbastudios.com W www.cbastudios.com

Client
Castlefield International Limited

Project Title
TEVERSHAM ROAD FULBURN

Drawing Series and Title
**4000 SERIES
 Planting Plan Sheet 2 of 6**

Scale @ A1
 1:500
 Drawn
 Pc
 Date
 SEP 2019
 Approved
 AS
 Drawing Status
FOR PLANNING

Drawing number
TRF-CBA-1-GF-M2-L-4013
 Revision
P3