

PLANTING SCHEDULE FOR DRAWING NO 4017

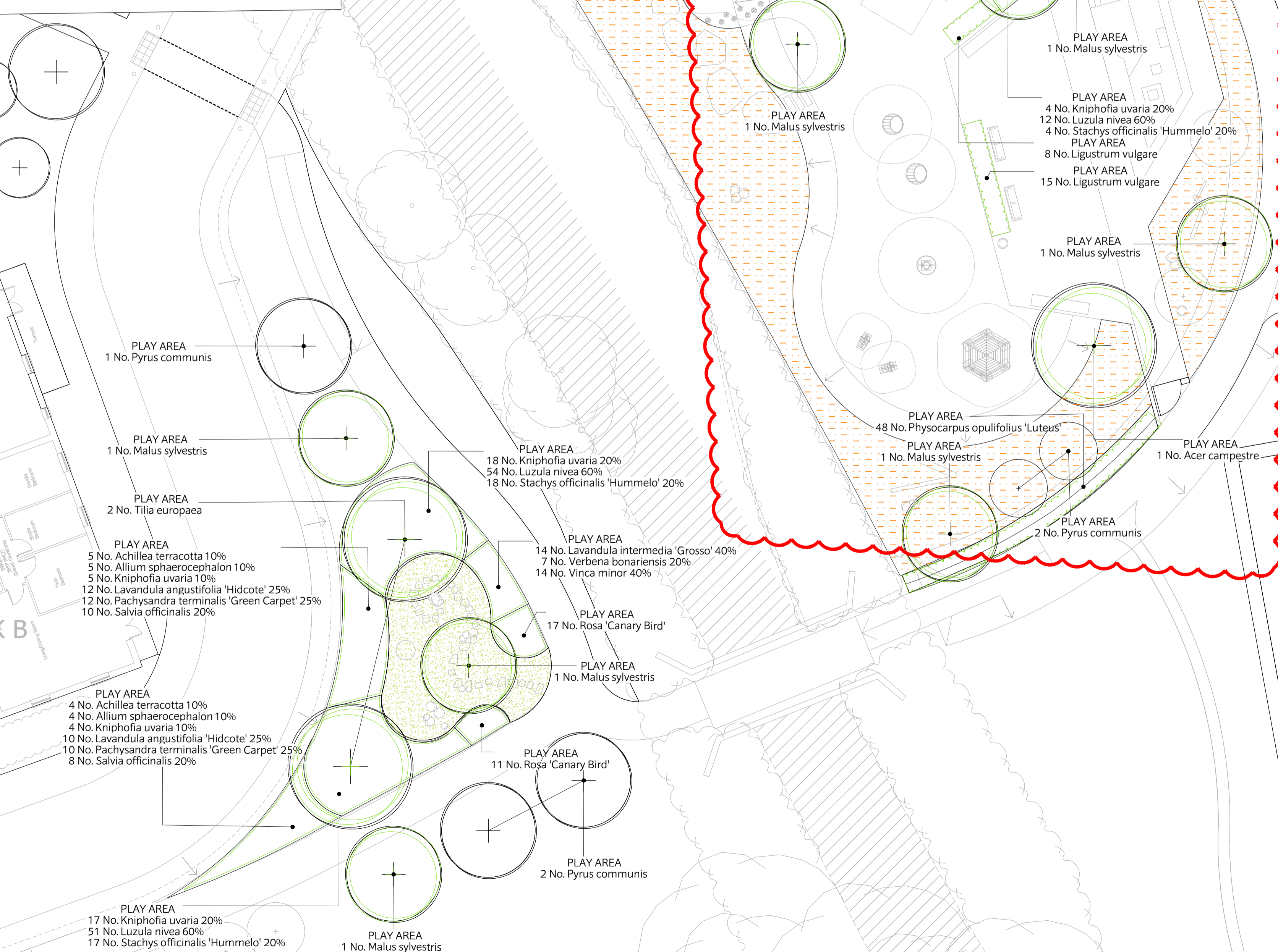
Number	Species	Specification	Girth	Height
1 No.	Acer campestre	Semi-Mature:Clear Stem min. 200 :4x :BR	16-18cm	4.0-4.5m
3 No.	Carpinus betulus 'A. Beekman'	Semi-Mature:Clear Stem min. 200 :4x :BR	16-18cm	4.0 - 4.5m
7 No.	Malus sylvestris	Standard:Clear Stem min. 200 :3x :RB Rootstock-M25	14-16cm	3.0-3.5m
8 No.	Pyrus communis	Half Standard:Clear Stem min. 200 :3x :RB Rootstock-Quince A	14-16cm	3.0-3.5m
3 No.	Tilia europaea	Semi-Mature:Clear Stem min. 200 :4x :BR	16-18cm	4.0 - 4.5m

LINEAR PARK - PLANTING

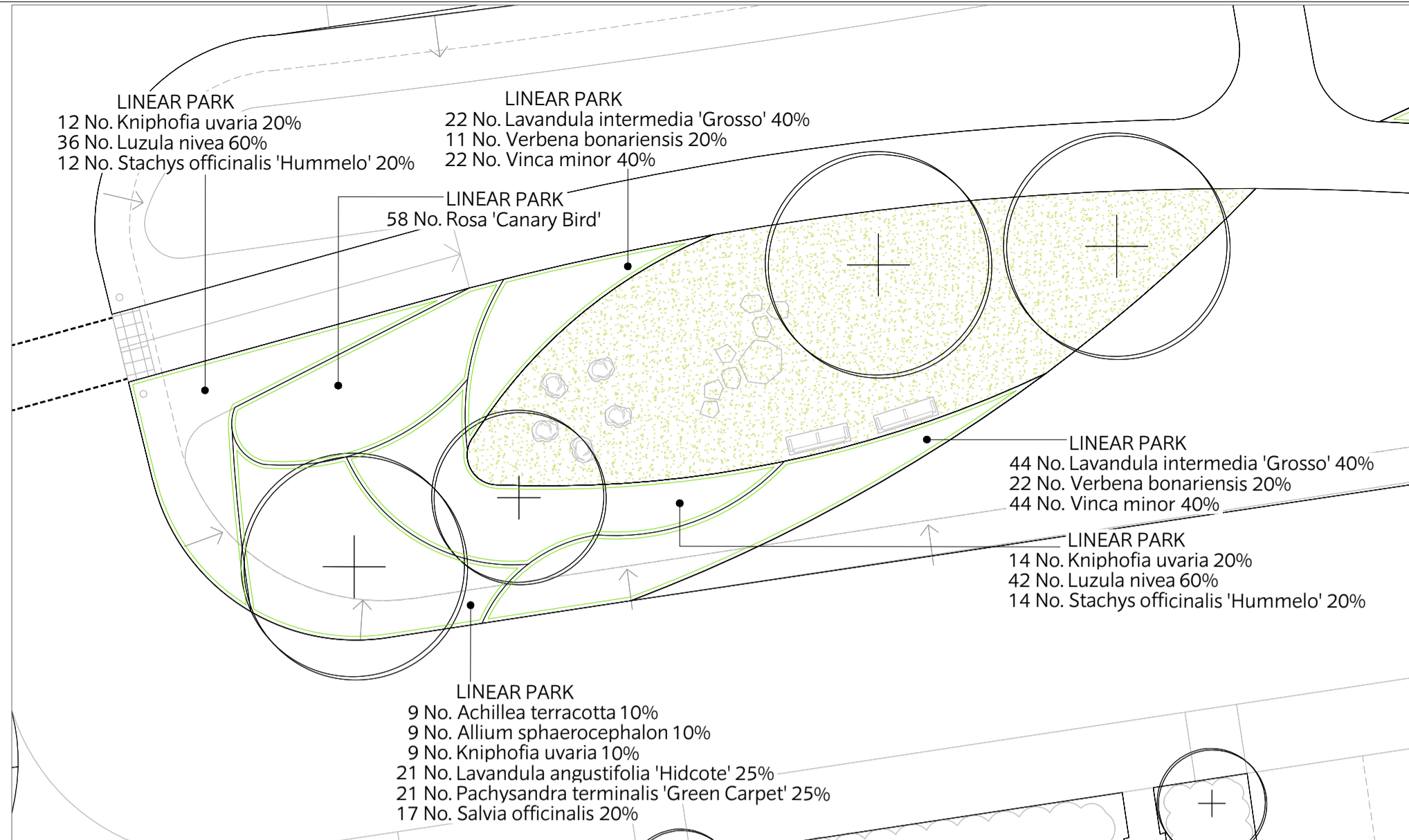
Number	Species	Pot Size	Density
9 No.	Achillea terracotta	5L	3/m <sup>2</sup>
9 No.	Allium sphaerocephalon	5L	3/m <sup>2</sup>
68 No.	Kniphofia uvaria	5L	3/m <sup>2</sup>
22 No.	Lavandula angustifolia 'Hidcote'	5L	3/m <sup>2</sup>
14 No.	Lavandula intermedia 'Grosso'	3L	5/m <sup>2</sup>
23 No.	Ligustrum vulgare	5L	0.4Ctr
177 No.	Luzula nivea	5L	3/m <sup>2</sup>
22 No.	Pachysandra terminalis 'Green Carpet'	5L	3/m <sup>2</sup>
144 No.	Physocarpus opulifolius 'Luteus'	5L	3/m <sup>2</sup>
28 No.	Rosa 'Canary Bird'	5L	3/m <sup>2</sup>
18 No.	Salvia officinalis	5L	3/m <sup>2</sup>
59 No.	Stachys officinalis 'Hummelo'	5L	3/m <sup>2</sup>
7 No.	Verbena bonariensis	3L	5/m <sup>2</sup>
14 No.	Vinca minor	3L	5/m <sup>2</sup>

PLAY AREA

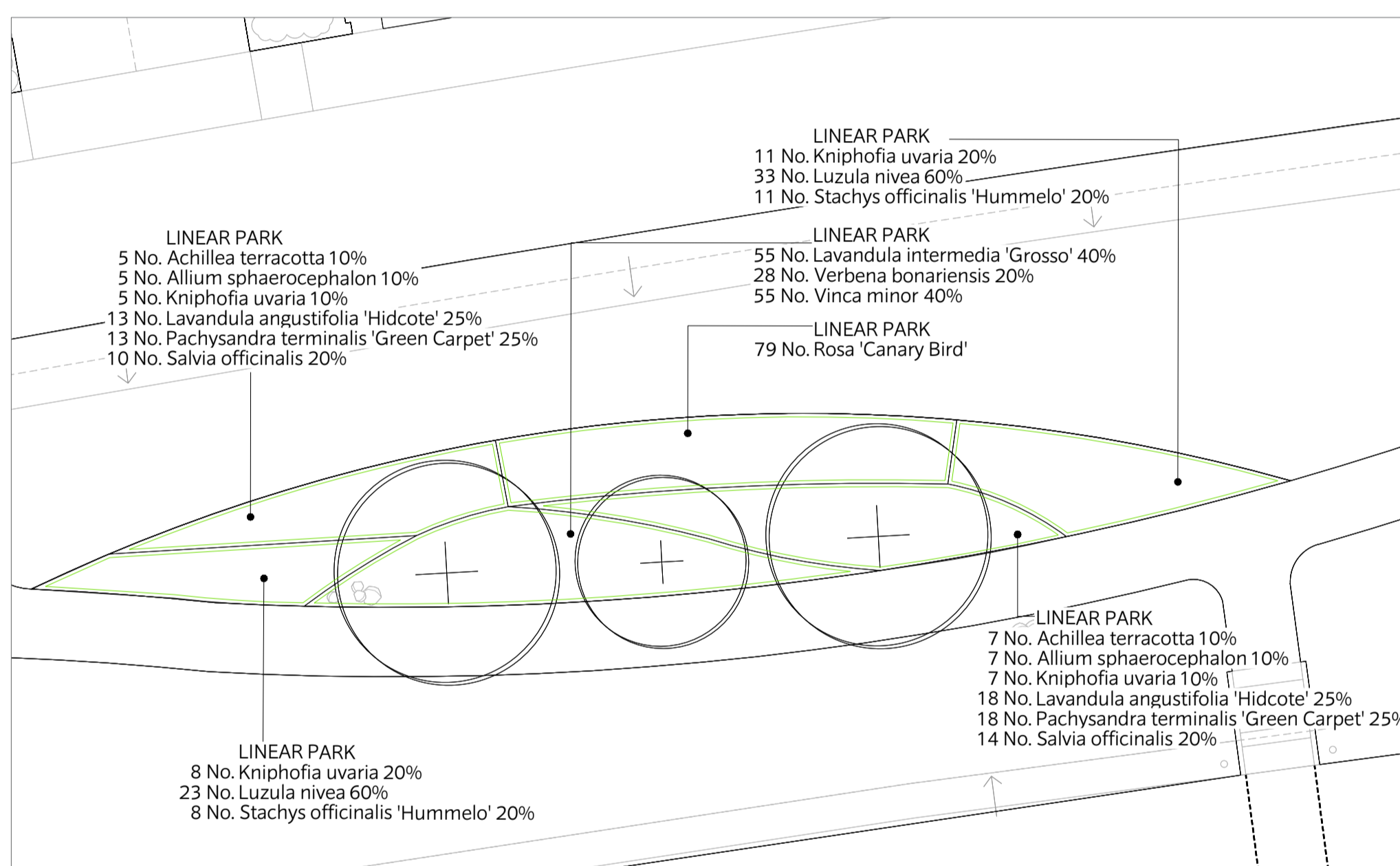
Number	Species	Pot Size	Density
9 No.	Achillea terracotta	5L	3/m <sup>2</sup>
9 No.	Allium sphaerocephalon	5L	3/m <sup>2</sup>
68 No.	Kniphofia uvaria	5L	3/m <sup>2</sup>
22 No.	Lavandula angustifolia 'Hidcote'	5L	3/m <sup>2</sup>
14 No.	Lavandula intermedia 'Grosso'	3L	5/m <sup>2</sup>
23 No.	Ligustrum vulgare	5L	0.4Ctr
177 No.	Luzula nivea	5L	3/m <sup>2</sup>
22 No.	Pachysandra terminalis 'Green Carpet'	5L	3/m <sup>2</sup>
144 No.	Physocarpus opulifolius 'Luteus'	5L	3/m <sup>2</sup>
28 No.	Rosa 'Canary Bird'	5L	3/m <sup>2</sup>
18 No.	Salvia officinalis	5L	3/m <sup>2</sup>
59 No.	Stachys officinalis 'Hummelo'	5L	3/m <sup>2</sup>
7 No.	Verbena bonariensis	3L	5/m <sup>2</sup>
14 No.	Vinca minor	3L	5/m <sup>2</sup>



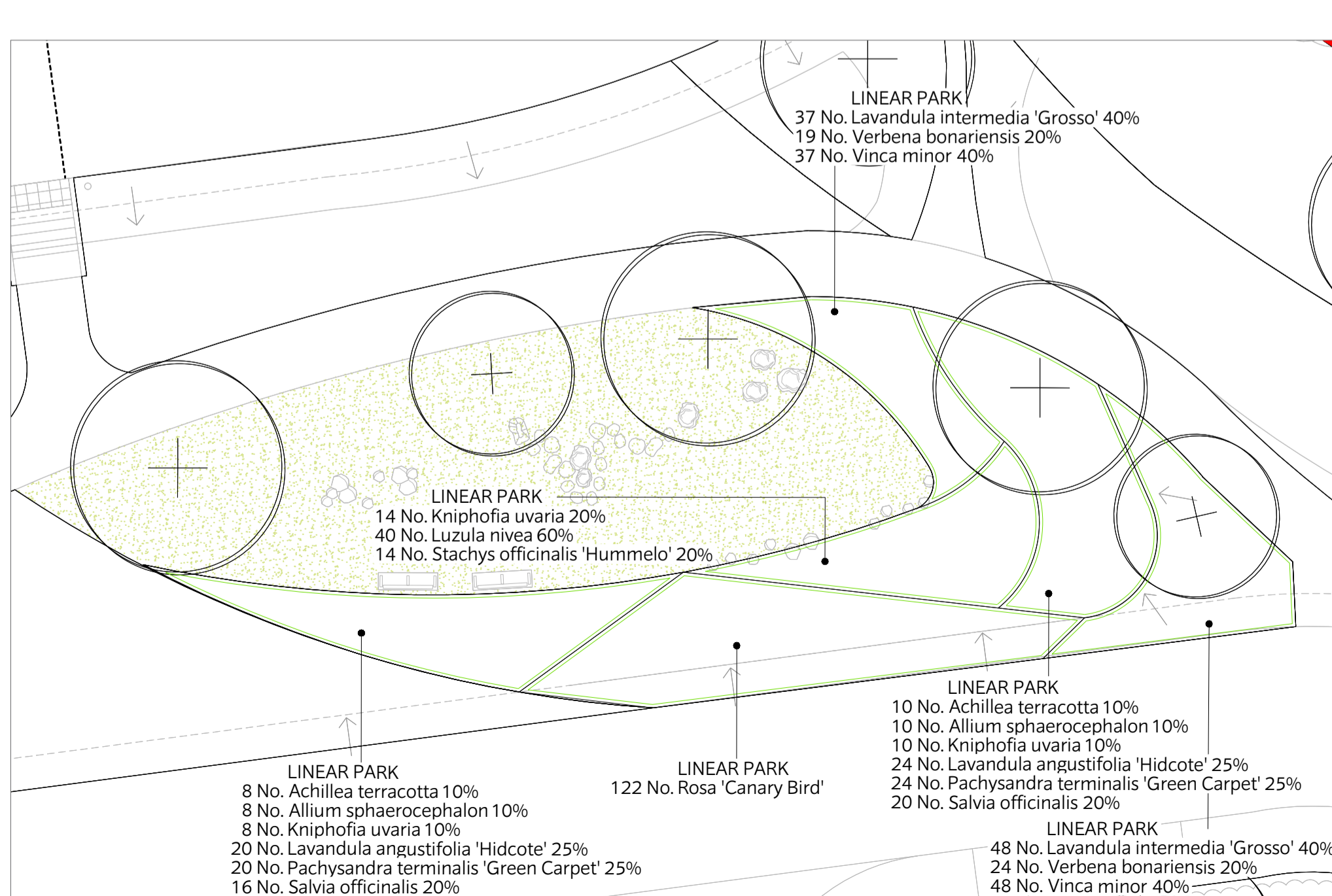
PLANTING PLAN A



PLANTING PLAN B



PLANTING PLAN C



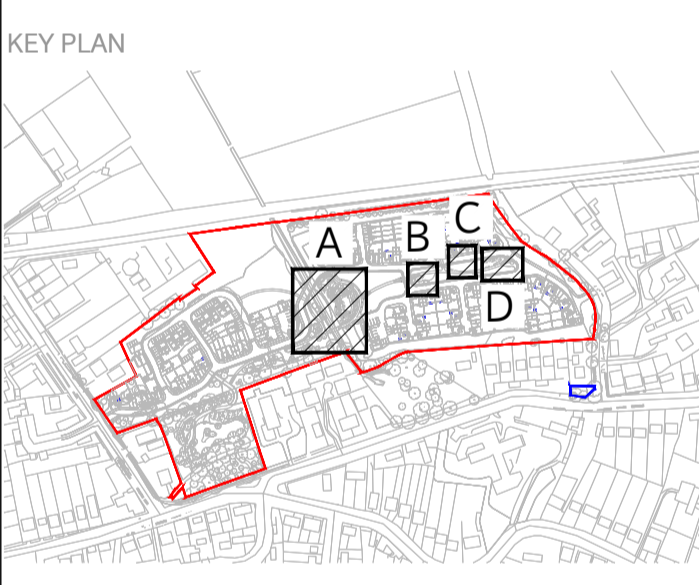
PLANTING PLAN D

This document should not be relied on or used in circumstances other than those for which it was prepared and for which Chris Blandford Associates was commissioned. Chris Blandford Associates accepts no responsibility for this document to any other party other than the person by whom it was commissioned.

**KEY**

- Site / Application boundary
- Other Land Under Applicant's Control
- Existing trees to be retained
- Proposed trees
- Proposed lawn: Lindum Festival Landscape Turf - L17
- Proposed flowering lawn Product: Meadow Mixture EM2 Supplier: Emorsgate Seeds
- Planting

**NOTE:**  
For overall planting schedule refer to drawing TRF-CBA-1-GF-M2-L-4011



Rev	Date	Drw	SM	Issued For
P4	23/10/20	PC		Revised submission
P3	23/06/20	P3		Revised submission
P2	13/03/20	PC		Revised submission
P1	02/03/20	PC		Revised Reserved Matters Application
SO	08/11/19	SM		Stage 3 Issue
PO	13/09/19	SM		Issued For Planning
Rev	Date	Drw	SM	Revision or reason for Issue



**CHRIS BLANDFORD ASSOCIATES**  
landscape | environment | heritage  
The Print Rooms Studio 511 164/180 Union St Waterloo London SE1 0LH  
T +44 (0)20 7089 6480 E mail:cbastudios.com W www.cbastudios.com

Client  
**Castlefield International Limited**

Project Title  
**TEVERSHAM ROAD FULBOURN**

Drawing Series and Title  
**4000 SERIES  
Planting Plan Sheet 6 of 6**

Scale @ A1  
1:150

Drawn  
PC

Date  
**SEP 2019**

Approved  
RB

FOR PLANNING

Drawing number  
TRF-CBA-1-GF-M2-L-4017

Revision  
P4