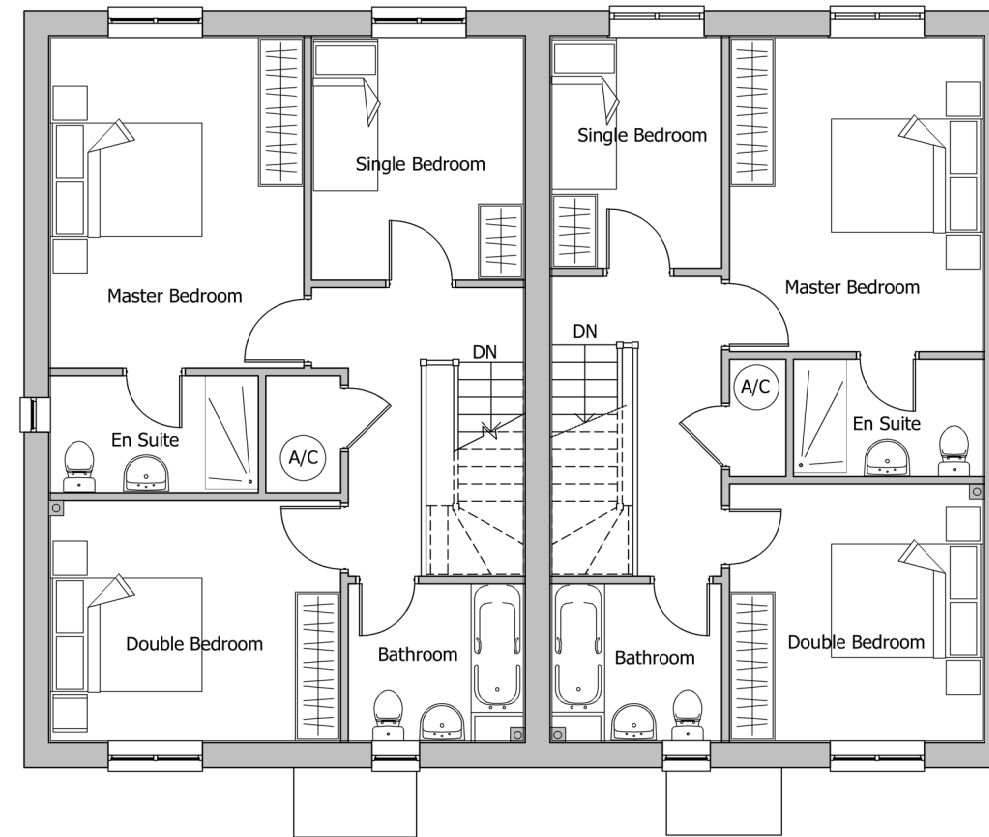
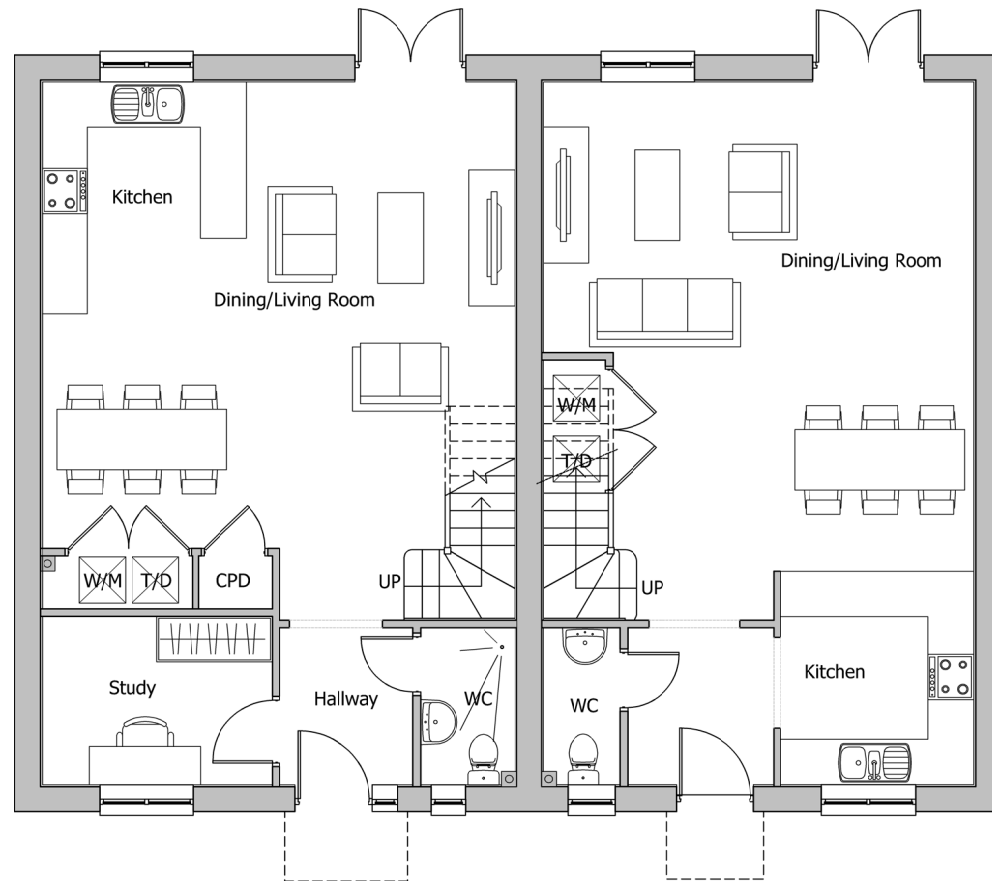


The scaling of this drawing cannot be assured

Revision - New HT in accordance with revised layout to LPA comments  
 Date 15.04.21  
 Drn PL  
 Ckd ROR



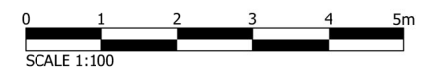
PLOT NUMBERS:  
 (as single plots)  
 AS: 2(E)  
 OPP: 3(C)

REFER TO SITE LAYOUT MATERIAL PLAN  
 A-P10-017 FOR INDIVIDUAL PLOT MATERIALS

REFER TO SITE PLAN A-P10-010 FOR  
 VARIATIONS OF GARAGE LOCATIONS.

PARKING	E	C
ON PLOT DRIVEWAY	1	2
GARAGE/CAR PORT	1	0

GENERAL PRINCIPLE PARKING PROVISION  
 REFER TO SITE LAYOUT HOUSING MIX  
 A-P10-015 FOR INDIVIDUAL PLOT SITUATIONS



AS  
 GROUND FLOOR PLAN

FIRST FLOOR PLAN

## PLANNING

Project  
**LAND AT TEVERSHAM ROAD  
 FULBOURN**

Drawing Title  
**HOUSE TYPE E/C  
 FLOOR PLANS**

Date 06.04.21  
 Scale 1:100@A3  
 Drawn by PL  
 Check by ROR

Project No 28815  
 Drawing No 28815-P11-51  
 Revision -

Note: Window positions and sizes may vary slightly dependent on house type character area location (internal layout is constant). This floor plan reflects the Village Lane character area variant. Please refer to general arrangement elevation drawings (P-13 series) for each character area.

**BARTON  
 WILLMORE**

Town Planning • Master Planning & Urban Design • Architecture •  
 Landscape Planning & Design • Infrastructure & Environmental Planning •  
 Heritage • Graphic Communication •  
 Communications & Engagement • Development Economics

bartonwillmore.co.uk



Offices at Birmingham Bristol Cambridge Cardiff Ebbsfleet Edinburgh  
 Glasgow Leeds London Manchester Newcastle Reading Southampton