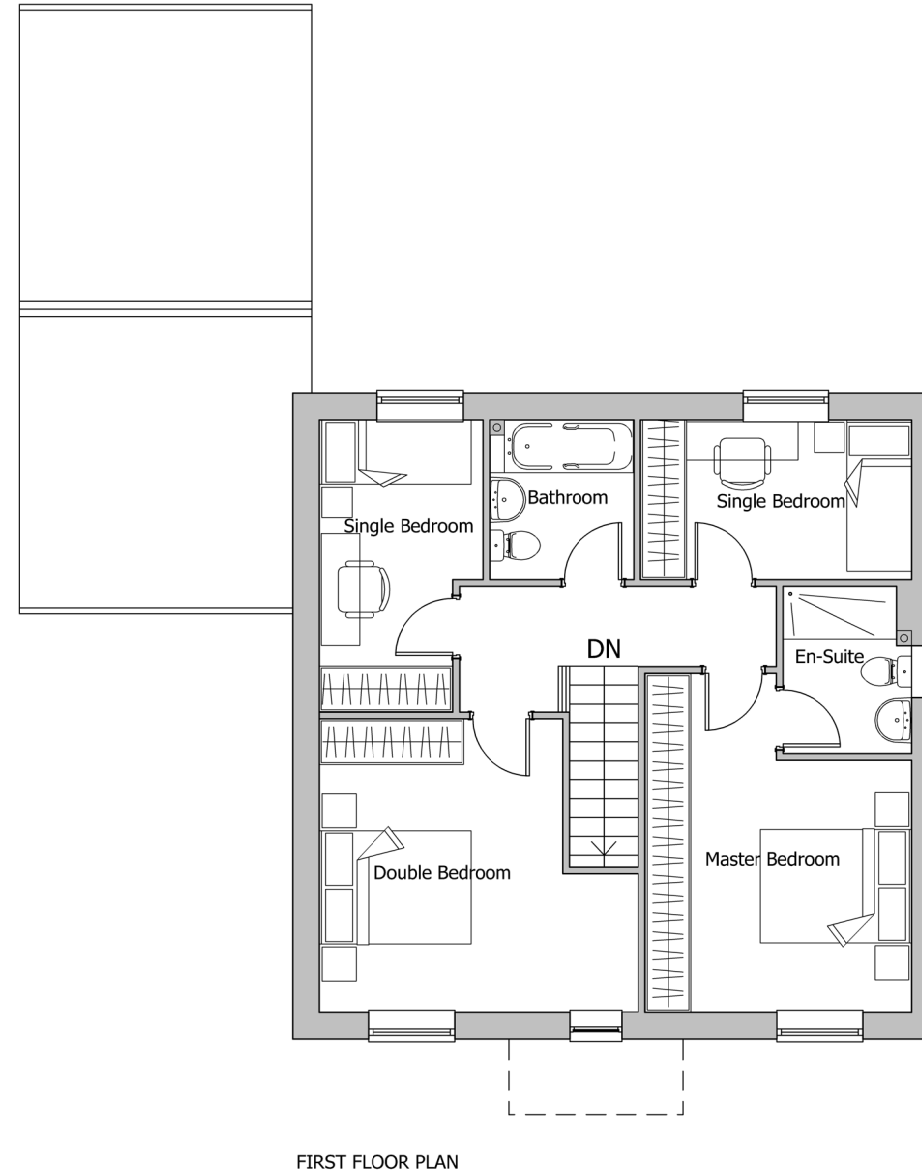
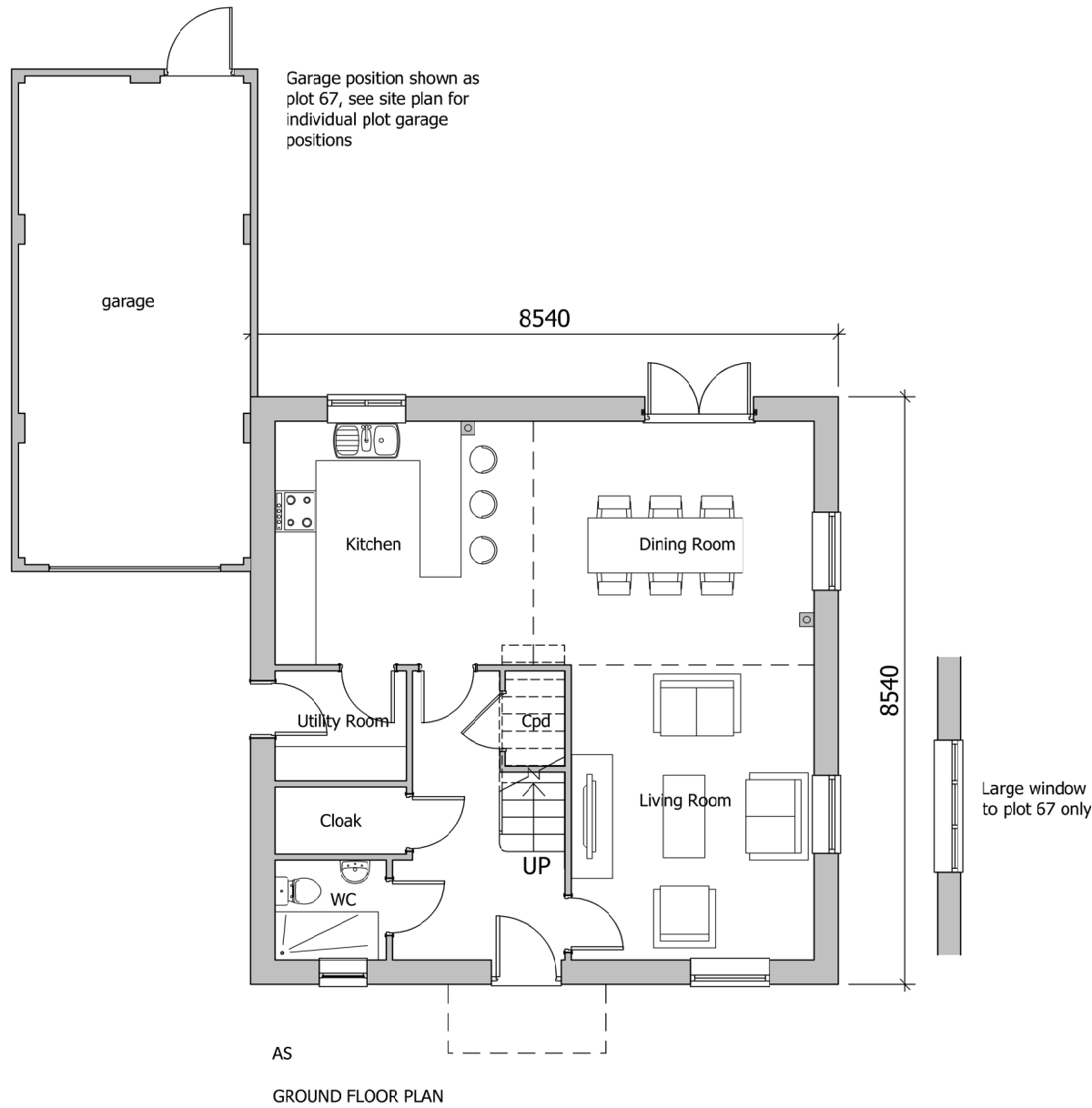


The scaling of this drawing cannot be assured

Revision	Date	Drn	Ckd
-	30.08.19	EM	CB
P1	28.02.20	ROR	ST
Revisions undertaken to LPA consultation responses and feedback			
P2	15.04.21	PL	ROR
Plot numbers updated in line with revised layout to LPA comments			



PLOT NUMBERS:  
AS: 67, 79, 103, 105

REFER TO SITE LAYOUT MATERIAL PLAN  
A-P10-017 FOR INDIVIDUAL PLOT MATERIALS

PARKING	
ON PLOT DRIVEWAY	1
GARAGE/CAR PORT	1

GENERAL PRINCIPLE PARKING PROVISION  
REFER TO SKETCH APPRAISAL LAYOUT (SK 001)  
FOR INDIVIDUAL PLOT SITUATIONS



## PLANNING

Project  
**LAND AT TEVERSHAM ROAD  
FULBOURN**

Drawing Title  
**HOUSE TYPE F  
FLOOR PLANS - (VILLAGE STREET)**

Date 15.07.19 Scale 1:100@A3 Drawn by WL Check by ST

Project No 28815 Drawing No 28815-P11-60 Revision P2

**BARTON  
WILLMORE**

Town Planning • Master Planning & Urban Design • Architecture •  
Landscape Planning & Design • Infrastructure & Environmental Planning •  
Heritage • Graphic Communication •  
Communications & Engagement • Development Economics

bartonwillmore.co.uk



Offices at Birmingham Bristol Cambridge Cardiff Ebbw Vale Edinburgh  
Glasgow Leeds London Manchester Newcastle Reading Southampton