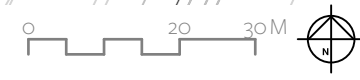
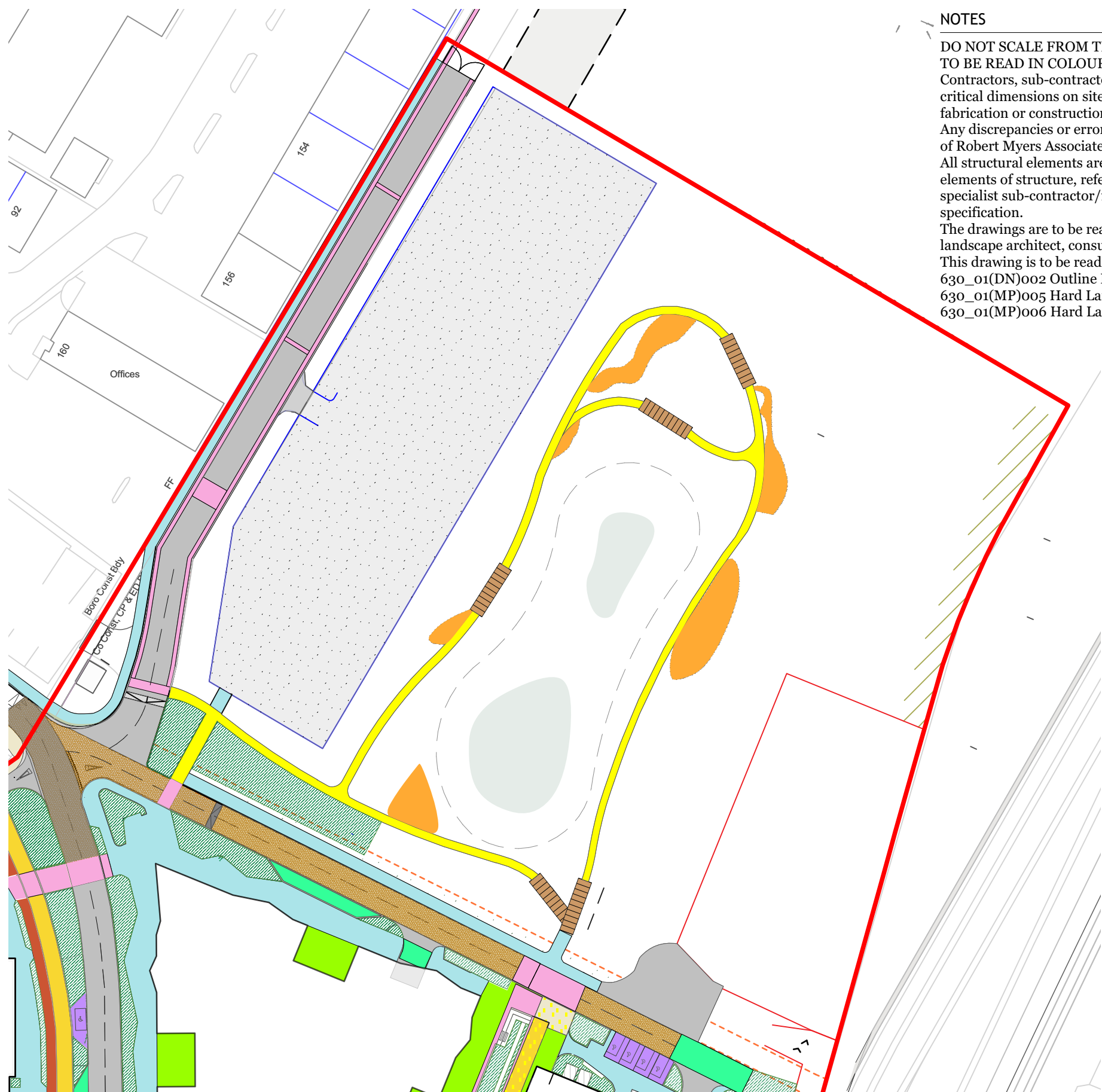


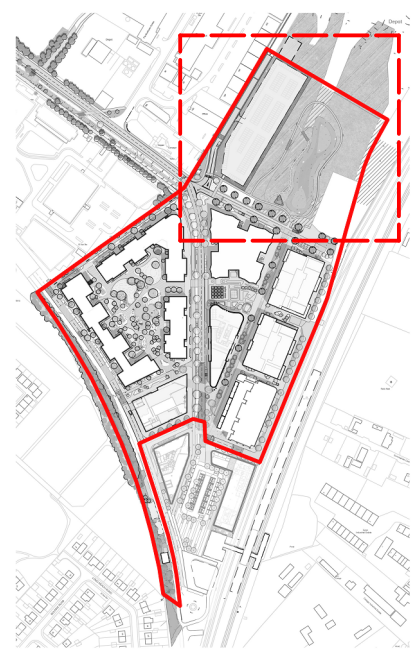
**NOTES**

DO NOT SCALE FROM THIS DRAWING  
 TO BE READ IN COLOUR  
 Contractors, sub-contractors and suppliers are to verify any critical dimensions on site prior to commencing work, fabrication or construction of any elements. Any discrepancies or errors must be brought to the attention of Robert Myers Associates.  
 All structural elements are shown indicatively. For all elements of structure, refer to structural engineers' and specialist sub-contractor/fabricators' design, detail and specification.  
 The drawings are to be read in conjunction with all relevant landscape architect, consultant and specialist drawings. This drawing is to be read specifically in conjunction with:  
 630\_01(DN)002 Outline Landscape Specification;  
 630\_01(MP)005 Hard Landscape Strategy (West); and  
 630\_01(MP)006 Hard Landscape Strategy (East).



- Site boundary
- Tarmac to road  
All adopted roads to CCC standards.
- Granite sets to loading bay and basement entry  
CED granite, colour: silver-grey; 100x100x80, laid staggered bond. Tumbled
- Granite sets to pedestrian crossing points  
CED granite, pink-grey, 100x100x100, laid staggered bond. Flamed finish.
- Existing charcoal block paving to be retained, or reinstated following construction where required. 200x100
- Block paving to raised tables, to match Station Square  
200x100x80mm(LxWxD), laid in herringbone. To CCC standards
- Block paving to ramp, to match Station Square  
200x100x80mm(LxWxD), laid in stretcher bond perpendicular to traffic direction. To CCC standards.
- Block paving to parking spaces  
Charcon Stonemaster, colour Amber Buff. 200x100x80 (LxWxD).
- Block paving to cycle path  
Marshall Modal, colour Oatmeal. 200x100x80 (LxWxD), laid stretcher bond in direction of travel
- Block paving to pedestrian pavement  
Marshall's Modal, colour Oatmeal Granite. 600x300x80 (LxWxD), laid stretcher bond as shown on plans.
- Pavers to Milton Way and retail entrances  
Marshall's Modal; two colours: 70% Light Cream Granite and 30% Oatmeal Granite, textured. 300x100x80mm and 200x100x80mm
- 'Gravel safe' loose surfacing to contained play areas  
Impact absorbing rounded gravel products supplied by CEDEC, conform to BS-EN 1176 and BS-EN 1177
- 'Mosaic' mix slab paving to Chesterton Square/Station Row/Piazza  
Marshall Modal, colour mix of 60% Light Cream Granite, 30% Oatmeal Granite and 10% Indian Granite. 600x300x80 and 400x300x80 (LxWxD), laid random stretcher bond as shown on plan.
- 'Mosaic' mix block paving to Station Row cycle path  
Marshall Modal, colour mix of 50% Blush, 25% Indian Granite and 25% Light Cream Granite. 200x100x80 (LxWxD), laid stretcher bond in direction of travel
- 'Mosaic' mix block paving to transitional end of cycle lane  
Marshall Modal, colour mix transition from cycle lane colours to Piazza colours.
- Ventilation grille  
Refer to architect's details and specifications
- Soft landscape planting  
(Refer to Soft Landscape drawings)
- Trail - Gravel/Breedon gravel
- Decking, FSC hardwood
- Extent of temporary construction logistics area

**LOCATION PLAN SCALE: NTS**



**PURPOSE OF ISSUE**

| Rev: | Date:    | Drawing Status: |
|------|----------|-----------------|
| P1   | 27.05.22 | FOR PLANNING    |

**REVISIONS**

| Rev: | Date:    | Description: |
|------|----------|--------------|
| P1   | 27.05.22 | First Issue  |

**CAMBRIDGE NORTH**

Client: Brookgate  
 Drawing: Hard Landscape Strategy (Wild Park)  
 Project No: 630\_01  
 Drawing No: 630\_01(MP)007  
 Scale: 1:1000 @A3  
 Date: May 2022  
 Checked: JB  
 Rev: P1  
 Drawn: EL  
 PM Checked: RM

**Robert Myers Associates**  
 LANDSCAPE ARCHITECTURE

13-15 Covent Garden  
 Cambridge  
 CB1 2HS  
 Tel: +44 (0) 1223 351400  
 info@robertmyers-associates.co.uk  
 www.robertmyers-associates.co.uk