

General Notes
 1. Dimensions are in millimetres unless stated otherwise.
 2. Levels are in metres AOD unless stated otherwise.
 3. Dimensions govern. Do not scale off drawing.
 4. All dimensions to be verified on site before proceeding.
 5. All discrepancies to be notified in writing to Make Limited.

© Make Limited 2022

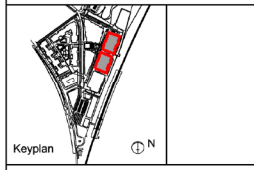
- 01 Pedestrian colonnade adjacent Cowley Road (South)
- 02 Inset full height windows / incorporating entrance doors and metal soffit.
- 03 Larger ground floor with large windows and low level metal spandrel
- 04 Single bay windows within brick piers and metal reveals
- 05 Full height louvres and louvred spandrel to create shadow feature between building mass
- 06 Bi-folding doors to basement car park with louvred sections
- 07 Level 03 terrace with metal and glass balustrade
- 08 Level 04 terrace providing access to plant area with setback perforated metal screen
- 09 Metal frame continues to frame perforated metal screen behind
- 10 Precast concrete framed raised grid raised to screen photovoltaic panels and plant beyond
- 11 Metal brise soleil
- 12 Green glazed bricks to head of level 2
- 13 Small shrubs at terrace edges with cascading habit in raised planters

01	21.09.22	Planning submission	GW
00	27.05.22	Planning submission	GW
Rev	Date	Reason For Issue	Chk

FOR PLANNING
DRAWING STATUS

make
 32 Cleveland Street
 London, W1T 4JY
 tel +44 (0) 20 7836 5151
 info@makearchitects.com
 www.makearchitects.com

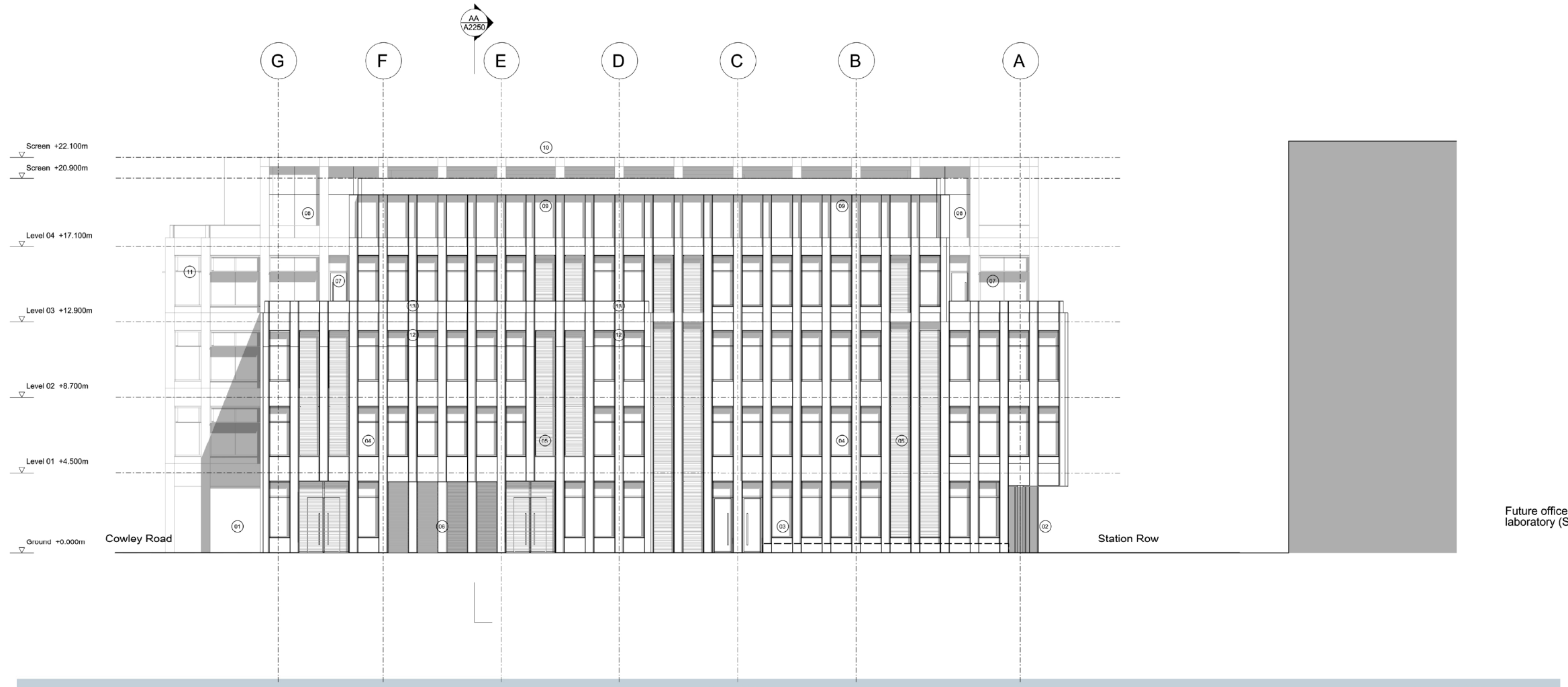
Client
BROOKGATE



Project
Cambridge North Masterplan

Drawing Title
S7 Proposed North-East Elevation

Scale	Paper Size	Date
1: 100	@A0	27.05.22
Project No.	Draw No.	Rev No.
1818	PA2201	01



3 Station Row S7 laboratory
 Illustrative rendered elevation - please note planting is indicative, refer to landscape architect's plans for location and details

