

1&3 STATION ROW (S6&S7) BUILDING ENVELOPE



CHOICE OF MATERIALS AND COLOURS

Bay study from plant screen to active frontages and building entrances.

Larger plant behind precast concrete grid and perforated metal screens

Metalwork continues to provided screen to open plant area with perforated metal screen behind

Glazed spandrels to hide ceiling zone

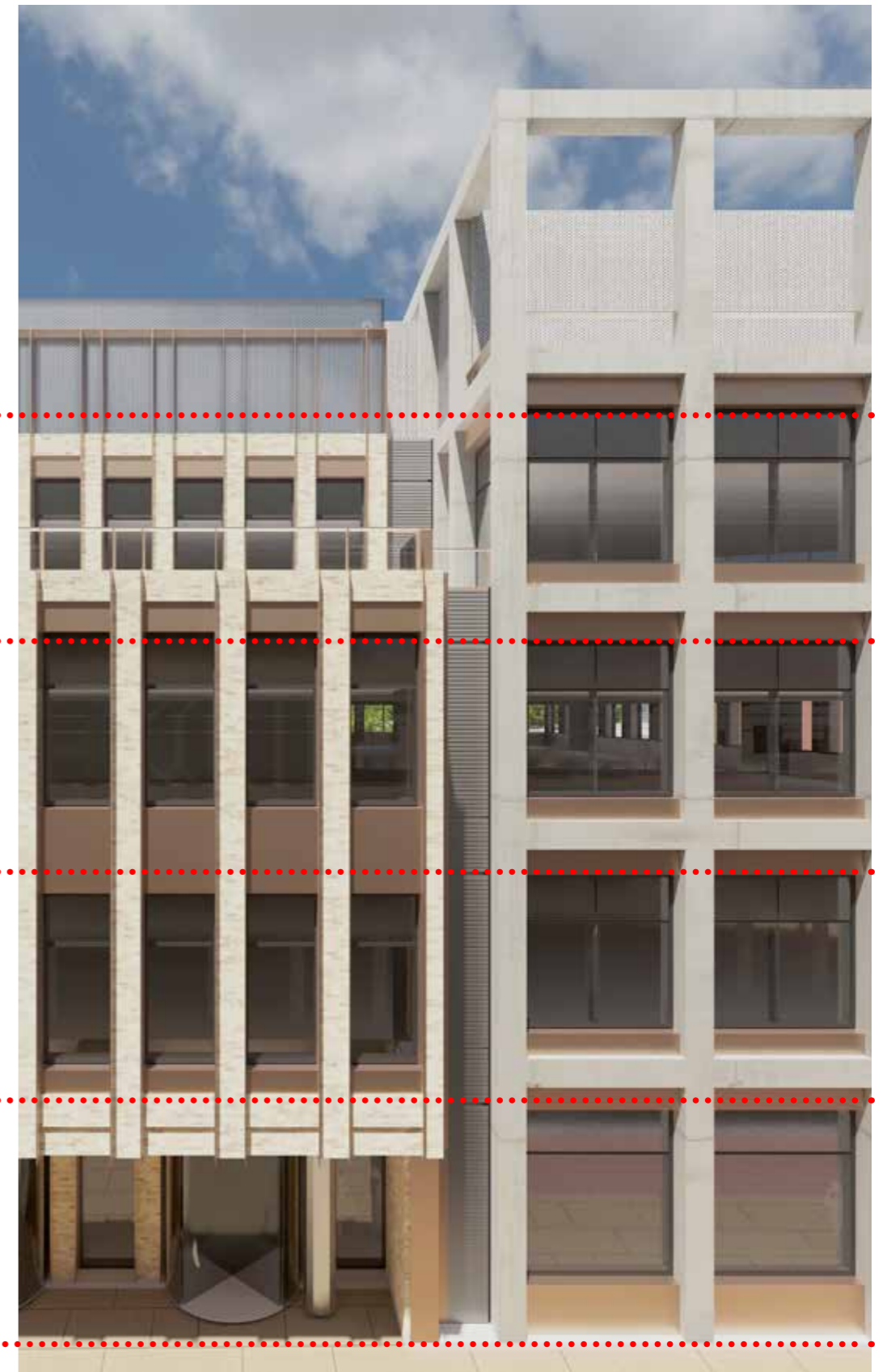
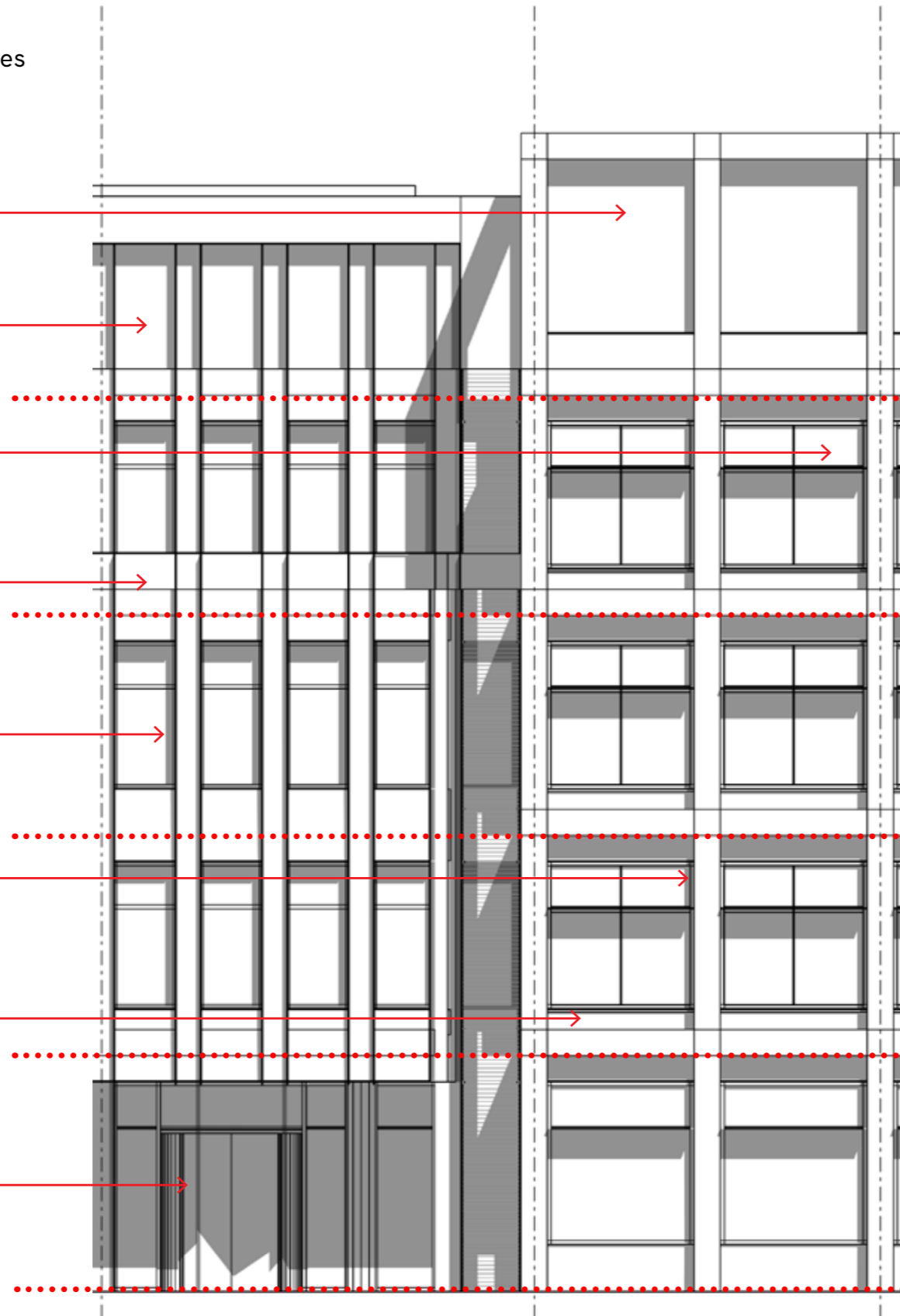
Metal/glass balustrade to level 03 terrace

Brick piers with metal fins to reveals (colour varies with elevation champagne/silver)

Precast concrete grid

High and low-level metal spandrels (colour varies with elevation champagne/silver)

Recessed entrance, metal soffit and drum doors at entrance



Bay study for 1&3 Station Row (S6&S7).

1&3 STATION ROW (S6&S7) ILLUSTRATIVE VIEWS

make



Illustrative view of 1&3 Station Row viewed north along Station Row.

1&3 STATION ROW (S6&S7) ILLUSTRATIVE VIEWS

make



Illustrative view of 1&3 Station Row viewed from the junction of Cowley Road and Station Row looking south.

1&3 STATION ROW (S6&S7) ILLUSTRATIVE VIEWS

make



Illustrative view of 1&3 Station Row viewed from Cowley Road (south) and corner of Station Row Passage.

1&3 STATION ROW (S6&S7) ILLUSTRATIVE VIEWS

make



Illustrative view of 3 Station Row looking south along Cowley Road (South) – NR compound fencing removed for clarity.

1&3 STATION ROW (S6&S7) ILLUSTRATIVE VIEWS



Illustrative view of 3 Station Row looking south along Cowley Road (South) – landscaped greenery removed from terrace for clarity.

1&3 STATION ROW (S6&S7) ILLUSTRATIVE VIEWS



Illustrative view of 1&3 Station Row looking along the eastern edge, with rail line in the foreground.

1&3 STATION ROW (S6&S7) ILLUSTRATIVE VIEWS

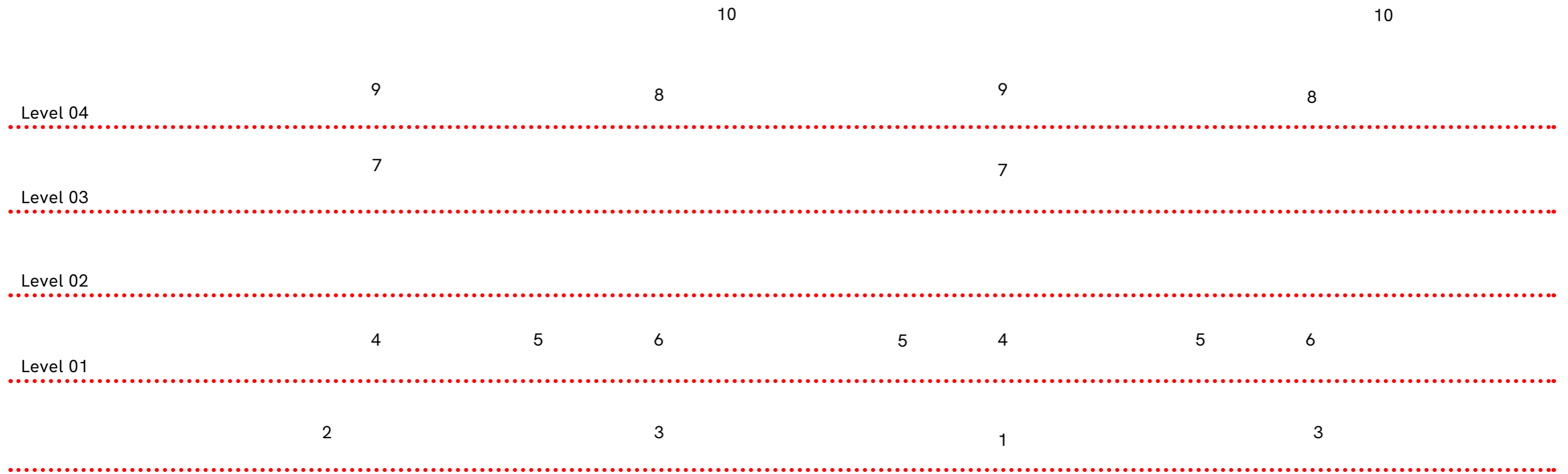


Illustrative view of 1&3 Station Row looking along the eastern edge – landscaped greenery removed from terrace for clarity.

1&3 STATION ROW (S6&S7) ELEVATIONS



WEST ELEVATION (S7) – FACING STATION ROW

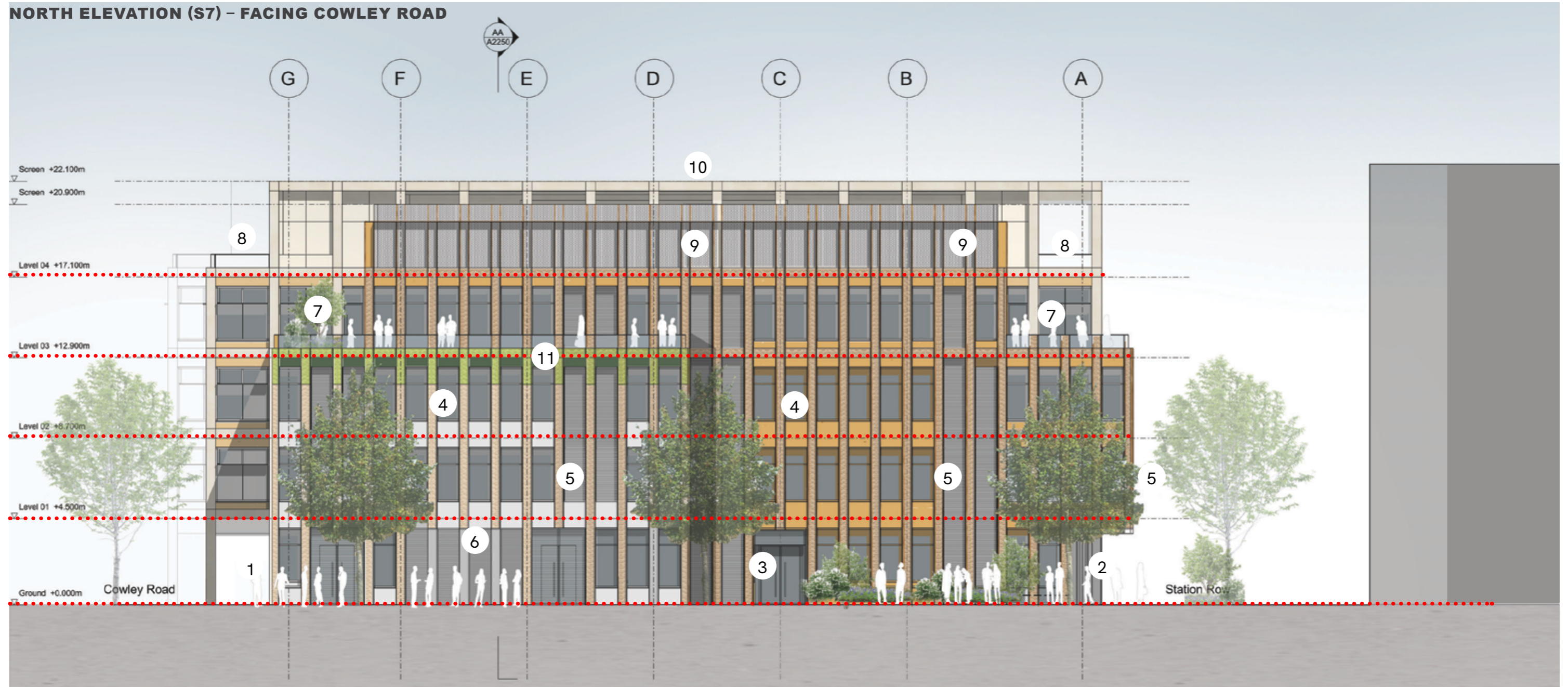


- 1. Inset full height windows, entrance drum doors and metal soffit to the lower level.
- 2. Inset full height windows, sliding entrance doors and metal soffit to the lower level.
- 3. Larger ground floor with large windows and low-level metal spandrels.
- 4. Single bay windows within brick piers and metal reveals.

- 5. Full-height louvres and louvred spandrels to create shadow feature between the building 'fingers'.
- 6. Double bay windows with precast concrete frame and upper and lower metal spandrels.
- 7. Level 03 terrace with metal and glass balustrade and raised planters for trees.

- 8. Level 04 terrace providing access to plant area with setback perforated metal screen.
- 9. Metal frame continues to frame perforated metal screen behind.
- 10. Precast concrete-framed grid raised to screen PV panels and plant beyond.

1&3 STATION ROW (S6&S7) ELEVATIONS



- 1. Pedestrian colonnade adjacent Cowley Road (South).
- 2. Inset full height windows, sliding entrance doors and metal soffit to the lower level.
- 3. Larger ground floor with large windows and low-level metal spandrels.
- 4. Single bay windows within brick piers and metal reveals. Two tones of colour finish (silver and bronze).

- 5. Full-height louvres and louvred spandrels within vertical grid.
- 6. Vehicle entrance to basement ramp with ventilated roller shutter, metal soffit and reveals.
- 7. Level 03 terrace with metal and glass balustrade and raised planters for trees.

- 8. Level 04 terrace providing access to plant area with setback perforated metal screen.
- 9. Metal frame continues to frame perforated metal screen.
- 10. Precast concrete-framed grid raised to screen PV panels and plant beyond.
- 11. Glazed green bricks to provide visual contrast in key views.