

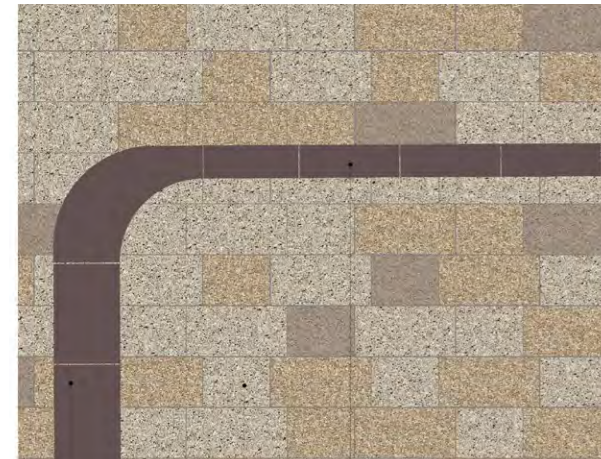
10. Hard Landscape

LANDSCAPE AND OPEN SPACE HARD LANDSCAPE CHARACTER

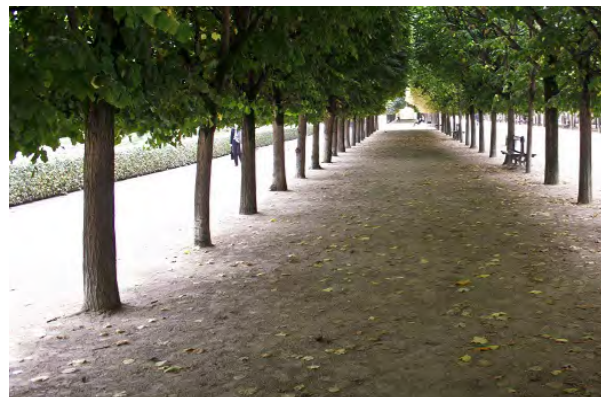
CHESTERTON SQUARE:



Corten steel



Warm tones 'mosaic' and a strong paving band



Self binding gravel under trees

STATION ROW:



Chunky conservation kerbs



Granite setts, both flamed and tumbled



Cycle path: Pinkish variation on Chesterton Square

CHESTERTON GARDENS:



Buff concrete paving in random 'half and whole' mix



Raised concrete seating kerbs



Rough timber & 'found' objects

WILD PARK:



Breedon gravel path with informal edge



Boardwalk over OMH



Fallen logs and planks

LANDSCAPE AND OPEN SPACE

HARD LANDSCAPE CHARACTER

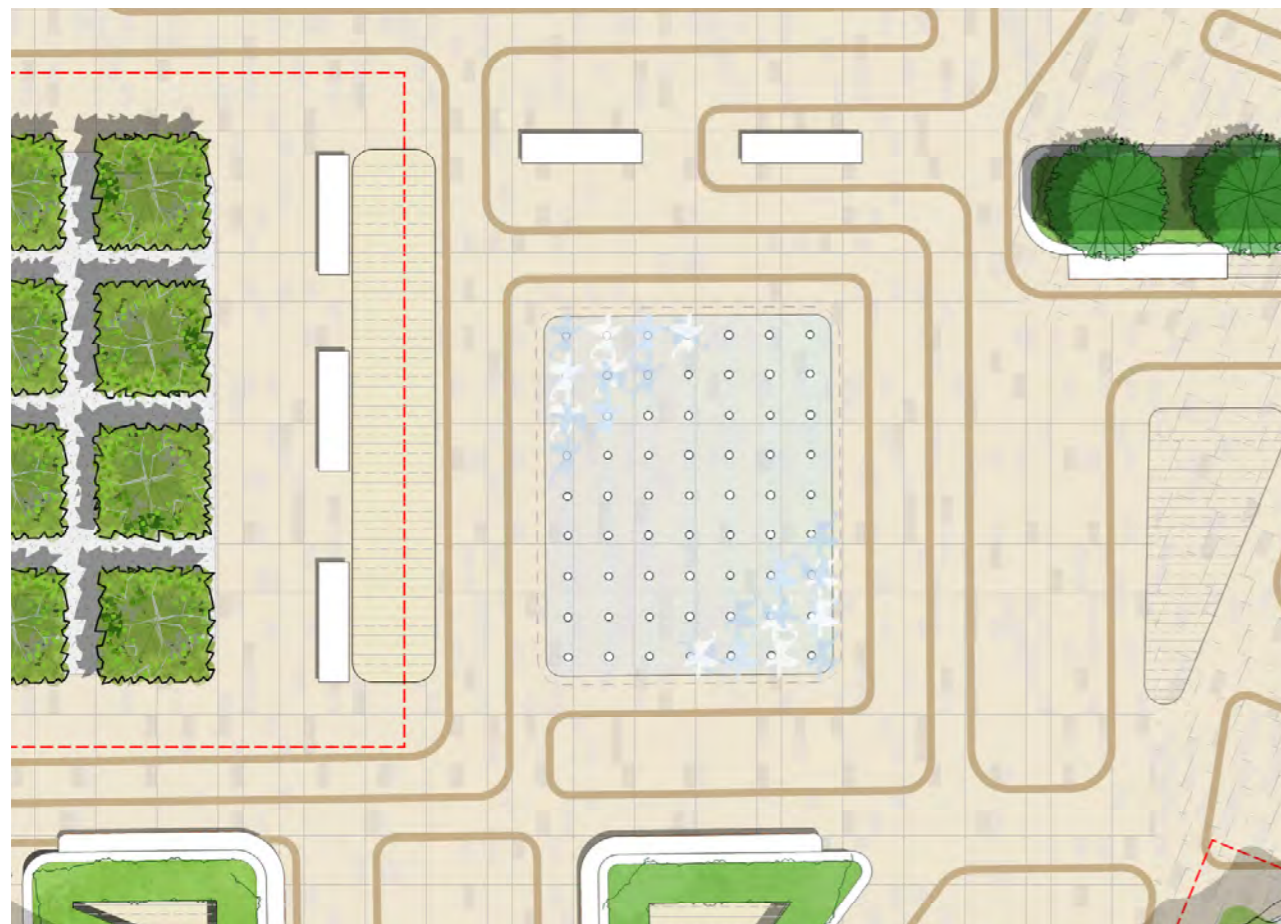
CHESTERTON SQUARE PAVING BAND DETAIL:

BESPOKE CUT GRANITE BAND CUTS THROUGH A 'MOSAIC' OF SUBTLY DIFFERENT WARM TONED CONCRETE PAVING BLOCKS



CHESTERTON GARDEN PAVING DETAIL:

BUFF AND GREY PAVING BLOCKS ALTERNATE IN WIDE AND NARROW IN RANDOM PATTERN. VARIATIONS ON THIS THEME AT SEATING AREAS AND COURTYARDS.



LANDSCAPE AND OPEN SPACE HARD LANDSCAPE (WEST)

KEY

-  Site boundary
-  Tarmac to road
All adopted roads to CCC standards.
-  Granite setts to loading bay and basement entry
CED granite, colour: silver-grey; 100x100x80, laid staggered bond. Tumbled
-  Granite setts to pedestrian crossing points
CED granite, pink-grey, 100x100x100, laid staggered bond. Flamed finish.
-  Existing charcoal block paving to be retained,
or reinstated following construction where required. 200x100
-  Block paving to raised tables, to match Station Square
200x100x80mm (LxWxD), laid in herringbone. To CCC standards
-  Block paving to ramp, to match Station Square
200x100x80mm (LxWxD), laid in stretcher bond perpendicular to traffic direction. To CCC standards.
-  Block paving to parking spaces
Charcon Stonemaster; colour Amber Buff. 200x100x80 (LxWxD),
-  Block paving to Cycle path
Marshall Modal; colour Oatmeal. 200x100x80 (LxWxD), laid stretcher bond in direction of travel
-  Block paving to pedestrian pavement
Marshall's Modal; colour Oatmeal Granite. 600x300x80 (LxWxD), laid stretcher bond as shown on plans
-  Pavers to Milton Way and retail entrances
Marshall's Modal; two colours: 70% Light Cream Granite and 30% Oatmeal Granite, textured. 300x100x80mm and 200x100x80mm
-  Pavers to Chesterton Gardens and residential courtyards
Marshall's Modal; colour: 60% Light Cream Granite, 30% Oatmeal Granite, 10% Mid Grey Granite textured. Two sizes, 400x205x80 and 200x100x80, in random parallel layout (refer to 630_01 (CD)008 Chesterton Gardens Typical paving detail)
-  Self binding gravel to Chesterton Gardens Pergola space
CEDEC self-binding rolled gravel surface. Colour silver, contained by Everedge steel edging
-  Pavers to Chesterton Gardens small seating areas and paths
Marshall's Modal; colour: Light Cream Granite, textured. 300x100x80mm laid 1/3 stretcher bond
-  Eco-granite paving blocks to Residential private terrace
Formpave Eco granite Longsetts, 300x100x80 (LxWxD)
-  Eco-granite paving slabs to Residential private terrace
Formpave Eco granite slabs, 450x300x60mm (LxWxD)
-  Rubber crumb surface to play areas
EDPM Wet pour safety surface to meet safety requirements for fall zone and cushioning
-  'Gravel safe' loose surfacing to contained play areas
Impact absorbing rounded gravel products supplied by CEDEC, conform to BS-EN 1176 and BS-EN 1177
-  Soft landscape planting
(Refer to 630_01 (MP) Soft Landscape Planting Strategy)
-  Lawn
-  Ventilation grille
Refer to architect's details and specifications.
-  Artificial grass
Lazy Signature, 12mm lazy foam underlay
-  Decking, FSC hardwood



LANDSCAPE AND OPEN SPACE HARD LANDSCAPE (EAST)

Key

-  Site boundary
-  Tarmac to road
All adopted roads to CCC standards.
-  Granite setts to loading bay and basement entry
CED granite, colour: silver-grey; 100x100x80, laid staggered bond. Tumbled
-  Granite setts to pedestrian crossing points
CED granite, pink-grey, 100x100x100, laid staggered bond. Flamed finish.
-  Existing charcoal block paving to be retained,
or reinstated following construction where required. 200x100
-  Block paving to raised tables, to match Station Square
200x100x80mm (LxWxD), laid in herringbone. To CCC standards
-  Block paving to ramp, to match Station Square
200x100x80mm (LxWxD), laid in stretcher bond perpendicular to traffic direction.
To CCC standards.
-  Block paving to parking spaces
Charcon Stonemaster; colour Amber Buff. 200x100x80 (LxWxD),
-  Block paving to Cycle path
Marshall Modal; colour Oatmeal. 200x100x80 (LxWxD), laid stretcher bond
in direction of travel
-  Block paving to pedestrian pavement
Marshall's Modal; colour Oatmeal Granite. 600x300x80 (LxWxD), laid stretcher bond
as shown on plans
-  'Mosaic' mix slab paving to Chesterton Square /Station Row/Piazza
Marshall Modal; colour mix of 60% Light Cream Granite, 30% Oatmeal Granite and 10% Indian Granite.
600x300x80 and 400x300x80 (LxWxD), laid random stretcher bond as shown on plan.
-  Water feature to Chesterton Square
'Sky mirror' and water jets embedded in delineated paving. To specialist's design and
specifications
-  Stone paving band to Chesterton Square
Granite paving band; colour: pink/warm grey; 300 to 600 width, cut to pattern.
Refer to drawing 630_01 (CD) 007 Chesterton Square paving detail
-  SuperCEDEC self-binding aggregate to Chesterton Square tree grid
SuperCEDEC selfbinding rolled gravel surface. Colour silver, contained by Everedge steel
edging
-  'Mosaic' mix block paving to Station Row cycle path
Marshall Modal; colour mix of 50% Blush, 25% Indian Granite and 25% Light Cream Granite.
200x100x80 (LxWxD), laid stretcher bond in direction of travel
-  'Mosaic' mix block paving to transitional end of cycle lane
Marshall Modal; colour mix transition from cycle lane colours to Piazza colours.
-  Ventilation grille
Refer to architect's details and specifications
-  'Gravel safe' loose surfacing to contained play areas
Impact absorbing rounded gravel products supplied by CEDEC,
conformin to BS-EN 1176 and BS-EN1177
-  Soft landscape planting
(Refer to Soft Landscape drawings)
-  Trail - Gravel/Breedon gravel
-  Decking, FSC hardwood

