

NOTES

DO NOT SCALE FROM THIS DRAWING
TO BE READ IN COLOUR

Contractors, sub-contractors and suppliers are to verify any critical dimensions on site prior to commencing work, fabrication or construction of any elements.

Any discrepancies or errors must be brought to the attention of Robert Myers Associates.

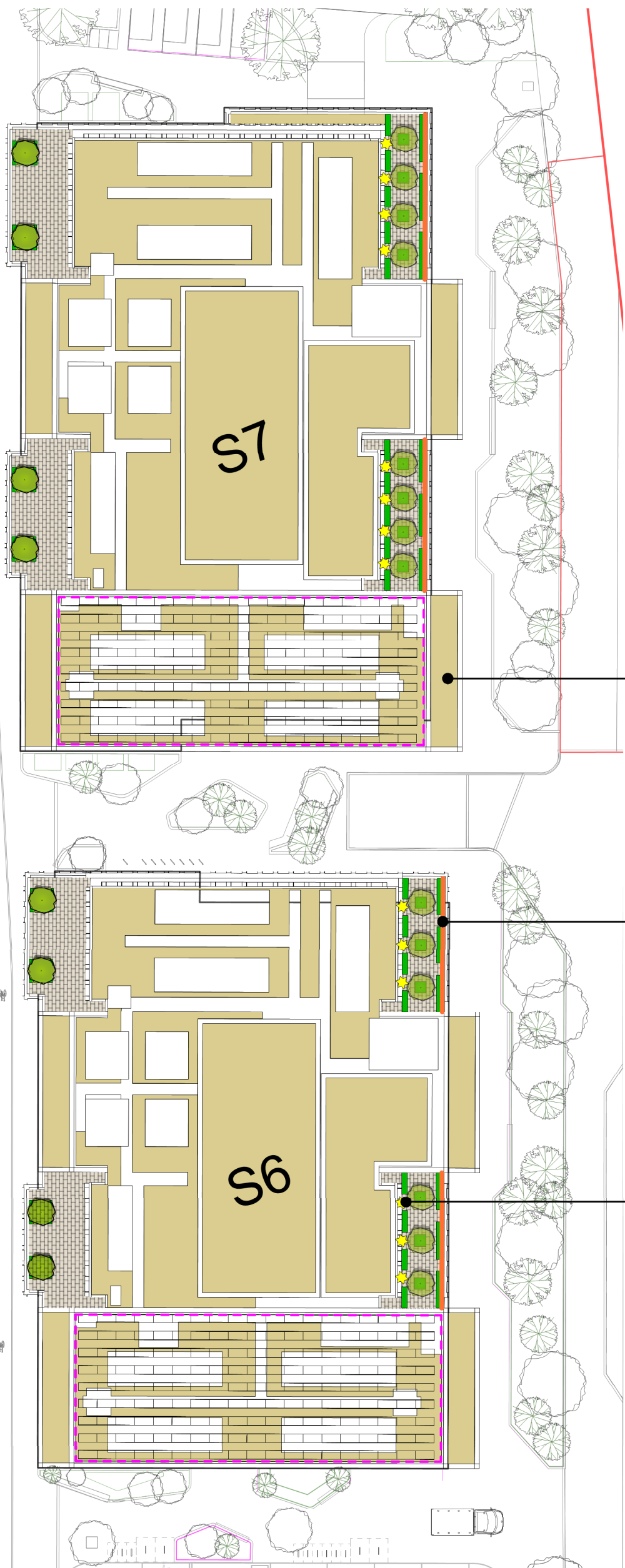
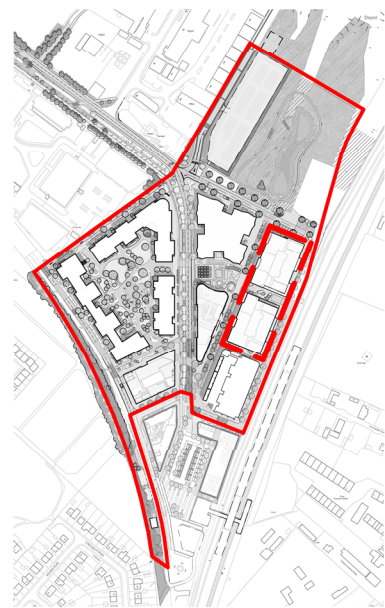
All structural elements are shown indicatively. For all elements of structure, refer to structural engineers' and specialist sub-contractor/fabricators' design, detail and specification.

The drawings are to be read in conjunction with all relevant landscape architect, consultant and specialist drawings.

This drawing is to be read specifically in conjunction with:

- 630_01(MP)019 Roof Strategy;
- 630_01(CD)005 Biodiverse Roof Typical Detail; and
- 630_01(CD)006 Typical Roof Planter Detail.

LOCATION PLAN SCALE: NTS



Seeding and ecological features to roof surfaces including grating pathways

Small shrubs at terrace edges with cascading habit in raised planters

Planting including vines (70% evergreen) tied to steel cables to grow on facade in raised planters

PURPOSE OF ISSUE

Rev:	Date:	Drawing Status:
P1	27.05.22	FOR PLANNING

REVISIONS

Rev:	Date:	Description:
P1	27.05.22	First Issue

CAMBRIDGE NORTH

Client: Brookgate

Drawing: Roof Garden - Labs

Project No: 630_01

Drawing No: 630_01(MP)212

Scale: 1:500@A3

Rev: P1

Date: May 2022

Drawn: EH

Checked: JB

PM Checked: RM

Robert Myers Associates
LANDSCAPE ARCHITECTURE



13-15 Covent Garden
Cambridge
CB1 2HS

Tel: +44 (0) 1223 351400

info@robertmyers-associates.co.uk
www.robertmyers-associates.co.uk

DO NOT SCALE FROM THIS DRAWING
© Robert Myers Associates

- Planting - Green/Brown roof seeding to lightweight substrate, comprising at least 50% translocated
- Paving slab/ Porcelain tile paving, 600x400x25mm(LxWxD)
- Ornamental Planting in Amenity Areas
- Proposed small trees/shrubs in raised planters. Evergreen to Eastern edge
- Solar panel extents (final PVs to be confirmed)

P-1 Roof Garden Lab- Plan
Scale 1:500 @ A3

