

General Notes
 1. Dimensions are in millimetres unless stated otherwise.
 2. Levels are in metres AOD unless stated otherwise.
 3. Dimensions govern. Do not scale off drawing.
 4. All dimensions to be verified on site before proceeding.
 5. All discrepancies to be notified in writing to Make Limited.
 © Make Limited 2022

- 01 Pedestrian colonnade adjacent Cowley Road (South)
- 02 Inset full height windows / incorporating entrance doors and metal soffit
- 03 Larger ground floor with large windows and low level metal spandrel
- 04 Single bay windows within brick piers and metal reveals
- 05 Full height louvres and louvred spandrel to create shadow feature between building mass
- 06 Metal louvred screen and doors to plant beyond
- 07 Level 03 terrace with metal and glass balustrade and raised planters for trees
- 08 Level 04 terrace providing access to plant area with setback perforated metal screen
- 09 Metal frame continues to frame perforated metal screen behind
- 10 Precast concrete framed raised grid raised to screen photovoltaic panels and plant beyond

00	27.05.22	Planning submission	GW
Rev	Date	Reason For Issue	Chk

FOR PLANNING
DRAWING STATUS

make
 32 Cleveland Street
 London, W1T 4JY
 tel +44 (0) 20 7636 5151
 info@makearchitects.com
 www.makearchitects.com

Client
BROOKGATE

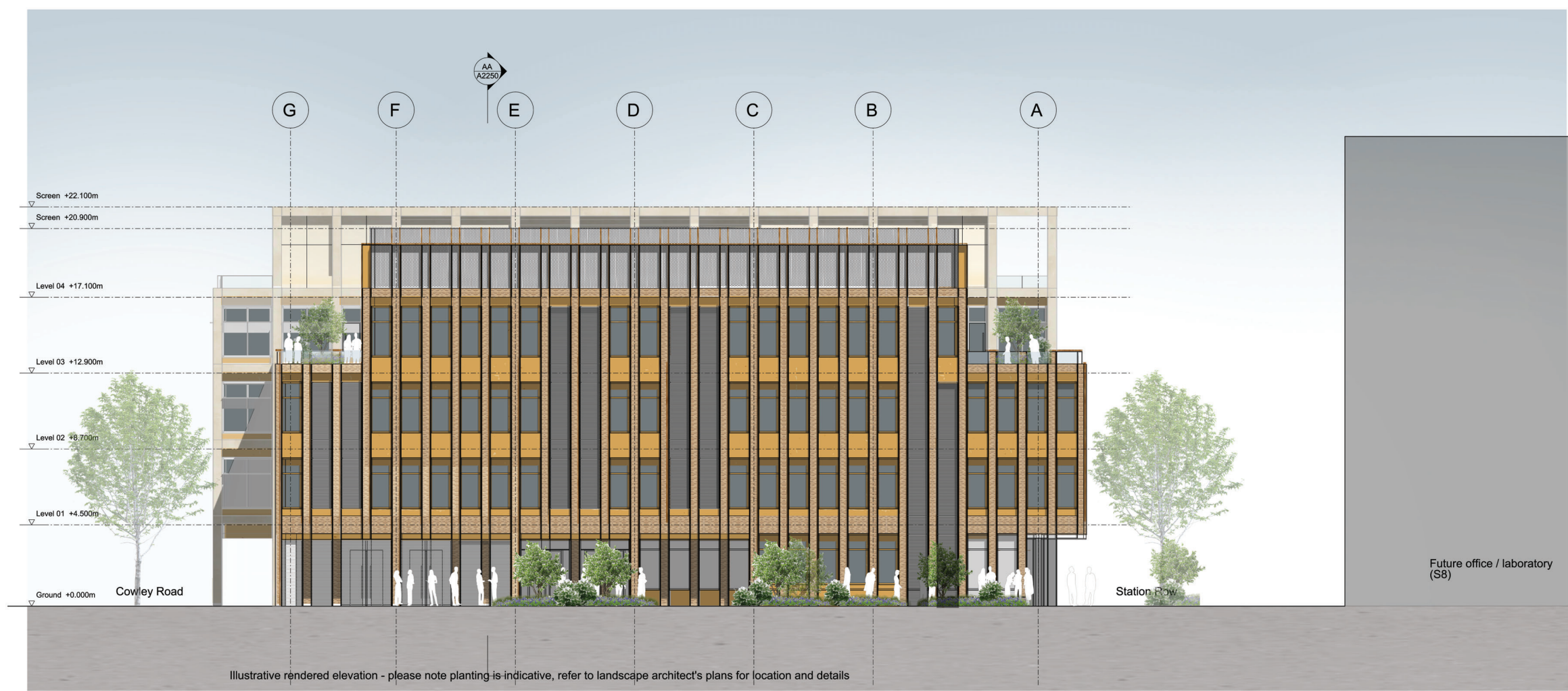
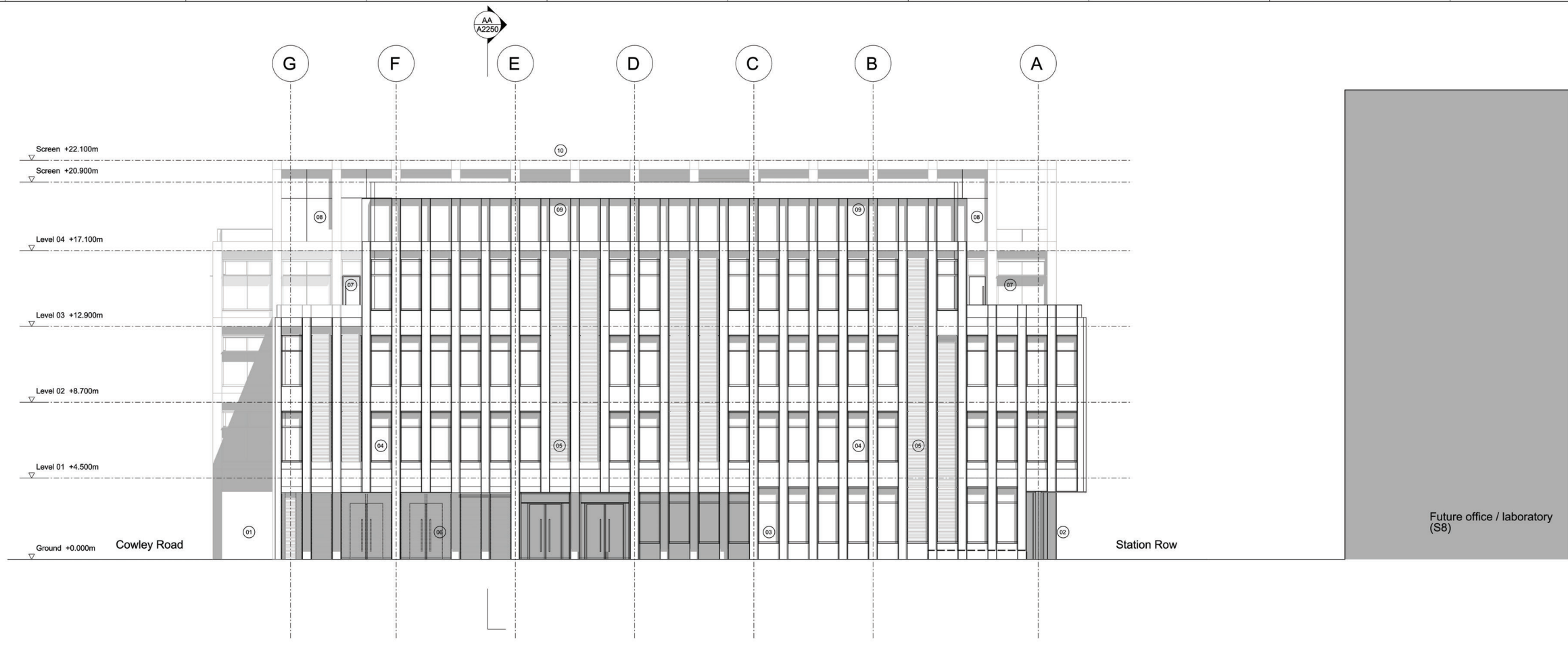


Project
Cambridge North Masterplan

Drawing Title
S6 Proposed North-East Elevation

Scale 1: 100
 Paper Size @A0
 Date 27.05.22

Project No.	Draw No.	Rev No.
1818	PA2201	00



1 Station Row S6 laboratory

