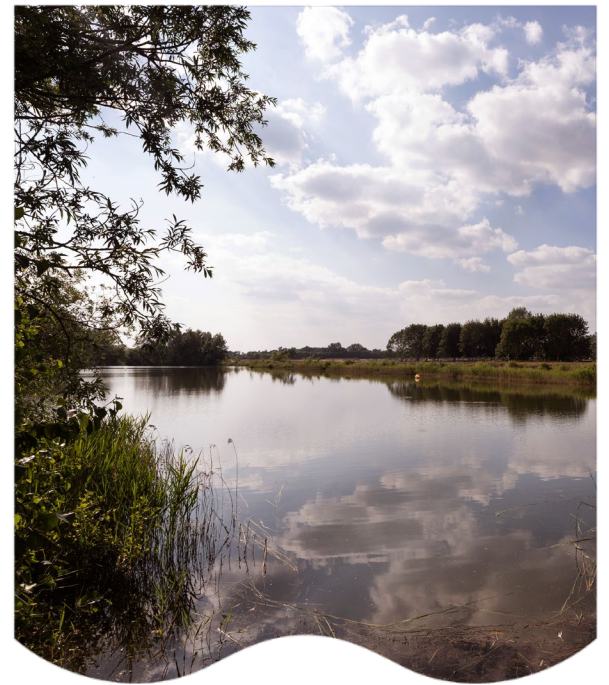


Waterbeach

Community Forum

October 2024

Urban&Civic Update



**LIFE  
BY THE  
LAKE**  
~~~~~

**Waterbeach**

# Development Update

- 74 Homes now occupied, with more sold and due to be occupied in the coming weeks
- Earthworks for next phase of homes have begun by the lake – ongoing until Spring 2025
- Finalising contracts for next parcels which include homes, interim health space and convenience store



# Transport

- Mere Way, Cycle Path and A10 Bridge are interconnected
  - Finalising contract for bridge provider – work due to commence later this year
  - Phase 1 of Mere Way complete
  - Phase 2 to begin shortly
- Working closely with GCP partners to ensure park&ride and busway align to ensure delivery
- Working closely with partners including GCP and RLW to ensure access / haul road for station move
- Bike hire is now available on site – bikes available outside Sports Hall and in Travel Hub. Bikes are free for first 45 minutes of hire
- Smart Journeys working to deliver active travel incentives including free bike servicing and lights for residents
- Shuttle bus service being designed to start Spring 2025 to help residents access peak commuter time trains – currently running as a free taxi service.

# Deneia Academy Primary School

- Continue to work with the County Council to deliver the primary school in time for when it is needed. Currently working to a September 2026 delivery.
- Working with the village school to ensure capacity and safe and easy access for our residents by bike, bus, walking or car.
- The school will be run by Anglian Learning, executive headteacher Rachael Johnston
- For any queries about places at the school please visit: [deneiaprimary.org](http://deneiaprimary.org) or email [enquiries@deneiaprimary.org](mailto:enquiries@deneiaprimary.org)



# Community

- Community Spaces continue to be well used with over 45 regular monthly groups and one-off events
- Café has moved to winter opening hours: Sat & Sun, 9am – 5pm
- Regular events for the community including painting by the lake
- Monthly Wellness Walks continue first Tuesday of the month at 1pm
- Meeting with Cambridge Sports Lake Trust next week to explore Summer 2025 lake activities – evolving from the lessons learnt this summer



# Any Questions?

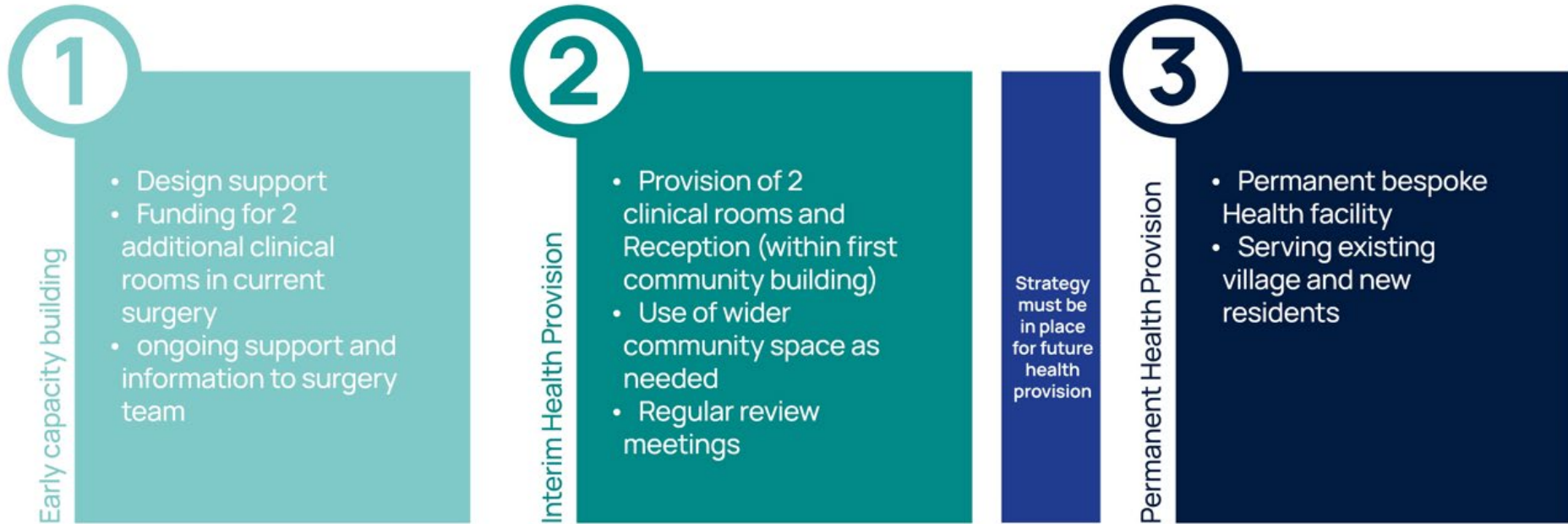
Waterbeach



Rebecca Britton  
Regional Director, Communications, Communities & Partnerships  
[rbritton@urbanandcivic.com](mailto:rbritton@urbanandcivic.com)

Fiona Reardon-Rose  
Communications & Partnerships Manager  
[fiona.reardon-rose@urbanandcivic.com](mailto:fiona.reardon-rose@urbanandcivic.com)

# Health



● Ahead of any homes being occupied. Part of Nursing accommodation being created.

  
By the time 250 homes are occupied

  
800 homes occupied

  
By the time 1,600 homes are occupied

# Key Phase One



- 1 Sustainable Travel Hub
  - 2 Space for imaginative play
  - 3 The Causeway
  - 4 Deneia Primary Academy
  - 5 Wild Woods Play Area
  - 6 Allotments
  - 7 Waterbeach Gardens
  - 8 Lake
  - 9 Community centre, café and interim health centre
  - 10 1.2km lake loop
  - 11 Memorial Park
  - 12 Sports Hall & The Playground assault course
  - 13 Mere Way cycle route
  - 14 Waterbeach Military Heritage Museum
  - 15 Squash courts
  - 16 Tillage Way cycle route
  - 17 Waterbeach Causeway
- Walking and cycling routes