



Cambridge City Council & South Cambridgeshire District Council

## **Greater Cambridge Air Quality Strategy**

**2024-2029**

## Non Technical Summary

Air quality in Greater Cambridge has been improving in recent years however, it is widely accepted that there is no safe level of air pollution.

Greater Cambridge is a major growth area with large scale development and population increase coming forward in the next 10-20 years. This Strategy seeks to strike a balance in supporting the productivity, economy and prosperity of Greater Cambridge whilst continuing to deliver improvements in air quality and the positive health outcomes that improved air quality will deliver for both residents and visitors to the Greater Cambridge area.

To help drive these improvements both Cambridge City Council (Cambridge City) and South Cambridgeshire District Council (SCDC) have agreed to work towards World Health Organization (WHO) Air Quality Guidelines with interim targets for delivery within the lifetime of the Strategy (5 years).

Air pollution can impact human health, the economy, and the environment. Whilst Local Authorities have the responsibility for monitoring air quality within their district, it is acknowledged that many of the changes needed to deliver improved air quality are managed and implemented by wider partner organisations.

The Greater Cambridge Air Quality Strategy outlines how improvements to air quality will continue to be delivered across Greater Cambridge. The Strategy focuses on sources of pollution that can be influenced locally by all partner organisations, working across a range of disciplines which all either directly or indirectly offer improved air quality. The primary objectives of the Strategy are:

- Continue to meet and deliver all legislative and policy requirements associated with air quality
- Continue to improve air quality across Greater Cambridge enhancing the health of those living, working and visiting Greater Cambridge
- Work towards World Health Organization Air Quality Guideline annual averages as longer term targets with interim targets for delivery within the lifetime of the Strategy (5 years)

The objectives of the Strategy across Greater Cambridge will be delivered under four key priority areas; Regulatory Policies & Development Control, Infrastructure Improvements, Community Engagement & Promotion and Monitoring. The Strategy includes an Action Plan of measures for delivering air quality improvements for delivery within the lifetime of the Strategy. The lifetime of the Strategy is 5 years, 2024 – 2029 inclusive.

Both Cambridge City and SCDC have an extensive network of monitoring across their districts. Monitoring will continue throughout the lifetime of the Strategy and will reflect how successful the measures in the Action Plan have been. Progress of the Strategy and Action Plan will be reported quarterly at Steering Group meetings and annually within the Annual Status Report which all local authorities are required to submit to DEFRA.

## 1. Background

Local Authorities have a statutory requirement under Local Air Quality Management (LAQM) to monitor air quality within their districts against national objective levels for key pollutants (Nitrogen Dioxide, Particulate Matter (PM<sub>10</sub>) and Sulphur Dioxide). Airborne Particulate Matter is made up of a collection of solid and / or liquid materials of various sizes. For PM<sub>10</sub>, particles are less than 10 micrometres in diameter.

Air quality within both the Cambridge City Council (Cambridge City) and South Cambridgeshire District Council (SCDC) areas; referenced for the purpose of this document as 'Greater Cambridge', has continued to improve with objective levels for all key pollutants being achieved in recent years. This is because of active measures implemented by both councils to improve air quality and the modernisation of the transport fleet in accordance with stricter emission standards.

New national legally binding PM<sub>2.5</sub> targets have been set under the Environmental Target Regulations in 2023. The National Air Quality Strategy (2023)<sup>1</sup> sets out how Local Authorities are expected to contribute to delivering these targets. Whilst it is acknowledged within the National Air Quality Strategy that not all sources of PM<sub>2.5</sub> originate from within a Local Authority district, the National Air Quality Strategy expects Local Authorities to consider those that are. Levels in Greater Cambridge are around the target annual mean.

For areas where pollutant levels are below objective levels, Local Authorities are expected to have a local Air Quality Strategy. The local Air Quality Strategy should demonstrate the effective use of powers to support improvements in air quality; taking preventative action to ensure air quality continues to improve. Further details on the Legislative and Policy requirements can be found in Appendix A.

It is important that focus now shifts away from LAQM objective levels towards exposure reduction and how we can maintain and continue to improve air quality across Greater Cambridge, whilst sustaining the scale of development coming forward in the next 20 years through the emerging Greater Cambridge Local Plan (2020-2041)<sup>2</sup>

---

<sup>1</sup> [www.gov.uk/government/publications/the-air-quality-strategy-for-england/air-quality-strategy-framework-for-local-authority-delivery#summary-of-powers-available-to-local-authorities](https://www.gov.uk/government/publications/the-air-quality-strategy-for-england/air-quality-strategy-framework-for-local-authority-delivery#summary-of-powers-available-to-local-authorities)

<sup>2</sup> [Greater Cambridge Local Plan \(greatercambridgeplanning.org\)](https://greatercambridgeplanning.org)

including measures in place to meet 58,500 new jobs across all employment sections and 44,400 new homes.

It is widely accepted that there is no safe level of air pollution<sup>3</sup>. Any improvements in air quality will have positive health benefits. Improvements to air quality also offer co-benefit for other interventions targeting health such as active travel and increased physical activity<sup>4</sup>.

The Strategy will outline practical measures to enable the continued improvement in air quality across Greater Cambridge working towards World Health Organization (WHO) target levels (2021). The WHO Air Quality Guidelines are target levels which protect public health and are lower than LAQM objective levels and PM<sub>2.5</sub> targets.

Given that not all sources of air pollution originate from within Greater Cambridge it is acknowledged that achieving these levels for all key pollutants may be challenging in some cases. Interim targets have been produced to help drive improvements, focussing efforts on sources that we have the power to influence working alongside partner organisations.

A Greater Cambridge Air Quality Strategy aligns with delivery under the emerging Greater Cambridge Local Plan and shared planning service and given the transboundary nature of air pollution enables a joined-up approach to improving air quality. The Greater Cambridge Air Quality Strategy also aligns with Cambridge City and SCDC carbon emission targets.

This Strategy fulfils the requirements under the LAQM Framework and ensures compliance with the Environment Act 1995 as amended under Environment Act 2021; taking into account responsibilities of local authorities under the National Air Quality Strategy (2023). It details why and how improvements to air quality should be achieved across Greater Cambridge in response to continued growth in the area.

The lifetime of the Strategy is 5 years, 2024 – 2029 inclusive.

## **2. Sources of air pollution and where people are exposed**

Greater Cambridge is a highly populated, diverse area with a mix of both urban and rural areas. Within the urban and more populated areas road transport is the main source of pollution. There are considerable differences in emissions between different vehicles and fuels. In general, diesel exhaust contains up to 30 times more particulate matter than petrol, but all vehicles even electric generate additional particulate matter

---

<sup>3</sup> [www.gov.uk/government/collections/comeap-reports](https://www.gov.uk/government/collections/comeap-reports)

<sup>4</sup> [Air Quality - A guide for directors of public health \(local.gov.uk\)](#)

from friction of brakes and tyres and through re-suspension of dust from road surfaces<sup>5</sup>.

Construction sites and non-road mobile machinery (NRMM) can also be a significant source of localised pollutants with solid fuel burning (wood and coal) a significant source of particulate matter.

Combustion from heating (both residential and commercial), farming activities and certain industrial processes also contribute to air pollution, but these tend to be more dilute contributing to background levels of air pollution.

Within urban areas the accumulation of pollutants from both road transport and solid fuel burning is important as emissions are often co-located with exposed pedestrians, residential properties, hospitals, schools, shops and other places where people congregate.

Exposure by residents and visitors will vary greatly as air pollution varies substantially over small distances and the local situation. It is typically highest near to the source e.g. busy road but declines rapidly as you move further away. Small changes in distance from the road, street layouts and physical barriers can make a big difference to exposure. Tall buildings along narrow streets can lead to the 'canyon effect' where pollution is trapped along the street or busy junctions can create localised 'pollution hotspots'.

Weather also influences exposure. Anyone 'downwind' of a source will be exposed, however windy conditions disperse pollutants and conversely some weather patterns will lead to an accumulation of pollutants that can build up over hours or days to cause an air pollution 'episode'.

The highly localised distribution of air pollution leads to highly unequal patterns of exposure to different individuals resulting from their day-to-day behaviour. For example someone that has to walk along a busy road to reach their place of work will be exposed to higher levels of pollutants compared to someone who uses an alternative quieter street to reach that same destination. People within a passively ventilated building will be exposed to much higher levels of pollution compared to an air-conditioned building, even if both are at the same distance downwind of the same source.

During the COVID 19 Pandemic the national lockdowns and subsequent reduction in vehicle movements and shift in behaviour, saw a significant reduction in nitrogen dioxide emissions but limited impact on particulate levels. This has helped inform our

---

<sup>5</sup> [Air Quality - A guide for directors of public health \(local.gov.uk\)](https://www.local.gov.uk)

priority areas for the local Strategy and when local authority intervention can have maximum impact<sup>6</sup>

The National Atmospheric Emissions Inventory (NAEI), provided by DEFRA sets out the emission sources for each Local Authority and how these contribute to the different pollutants.

## 2.1 Cambridge City

### *Nitrogen Dioxide (NO<sub>2</sub>)*

Data from the NAEI shows that traffic is the main contributor to NO<sub>2</sub> emissions, with 1-25 tonnes per 1km<sup>2</sup> of NO<sub>2</sub> mainly from road transport, with minor roads and cold starts contributing the most in the City. Other sources of NO<sub>2</sub> in the City come from non-industrial combustion plants, combustion in manufacturing, and other mobile machinery (rail and other off road).

A source apportionment study undertaken by Cambridge City Council in 2019 supports these findings with traffic the main contributor to NO<sub>2</sub> emissions in the City. The study found the primary vehicle type contributing to NO<sub>2</sub> emissions varied based on location and road type with buses the main contributor in the centre of Cambridge; cars on the outer ring roads and on the outskirts of Cambridge on the major roads such as the A14 & M11, HGVs.

### *Particulates (PM<sub>10</sub> and PM<sub>2.5</sub>)*

The NAEI has found that there is a change in sources of particulate emissions over the past 10 years, with a decrease in particulates from industry and energy generation as the switch to gas has occurred<sup>7</sup>. This has been offset by an increase in domestic burning.

The NAEI estimates that on average across Cambridge 1-4 tonnes per 1km<sup>2</sup> of PM<sub>10</sub> are from non-industrial combustion plant (such as domestic burning) with 0.2-1 tonnes per 1km<sup>2</sup> from road transport (brake and tyre wear).

This is again supported by the findings of the Cambridge City Council source apportionment study which found that the majority of the sources of particulates was from background sources rather than road traffic sources.

---

<sup>6</sup>[https://www.google.co.uk/url?sa=t&rct=j&q=&esrc=s&source=web&cd=&ved=2ahUKEwiF4Yviu9WDAxX\\_gv0HHQ8LDqoQFnoECA8QAQ&url=https%3A%2F%2Femaq.ricardo.com%2Fmod%2Fresource%2Fview.php%3Fid%3D503&usg=AOvVaw3nF2V9nuHZIR1espaUSChm&opi=89978449](https://www.google.co.uk/url?sa=t&rct=j&q=&esrc=s&source=web&cd=&ved=2ahUKEwiF4Yviu9WDAxX_gv0HHQ8LDqoQFnoECA8QAQ&url=https%3A%2F%2Femaq.ricardo.com%2Fmod%2Fresource%2Fview.php%3Fid%3D503&usg=AOvVaw3nF2V9nuHZIR1espaUSChm&opi=89978449)

<sup>7</sup> NAEI Report 2022 – Data for 2005-2020

The NAEI attributes 75% of the source of PM<sub>2.5</sub> in Cambridge to background sources. The majority of which are classed as non-industrial combustion plant (domestic wood / domestic other). The remaining 25% of the source of PM<sub>2.5</sub> is attributable to non-exhaust emissions of tyre and brake wear associated with road transport.

It should be remembered that PM<sub>2.5</sub> is also not just generated as a primary particle but is also generated as a secondary particle due to chemical interactions of other pollutants.

## 2.2 South Cambridgeshire

### *Nitrogen Dioxide (NO<sub>2</sub>)*

The main contributor to NO<sub>2</sub> emissions in South Cambridgeshire is from road transport, with major roads adding up to 25 tonnes per 1km<sup>2</sup>. This includes emissions from the regionally important strategic roads of the M11, A14 and A11. There are eight significant point sources of NO<sub>2</sub> listed within the National Atmospheric Emissions Inventory within South Cambridgeshire which predominantly relate to manufacturing and waste sites, but also includes the Cambridge Crematorium which SCDC regulate through a part B environmental permit.

### *Particulates (PM<sub>10</sub> & PM<sub>2.5</sub>)*

The main contributor to PM<sub>10</sub> emissions in South Cambridgeshire is from non-industrial plant (up to 4 tonnes per 1km<sup>2</sup>), this includes domestic burning and is distributed within centres of population in the district. Road transport contributes a smaller amount to emissions with emissions coming from road abrasion, brake and tyre wear (non-exhaust and emissions) and exhaust emissions (up to 2 tonnes per 1km<sup>2</sup>).

For PM<sub>2.5</sub> the picture is similar to that of PM<sub>10</sub> with the major source of emissions being non-industrial plant, with the majority coming from domestic wood and other solid fuel burning. For roads in the district emissions are associated with non-exhaust emissions (up to 1 tonne per 1km<sup>2</sup>) and exhaust emissions (up to 1 tonne per 1km<sup>2</sup>).

## 3. Improving Air Quality in Greater Cambridge

### 3.1 Objectives

It is widely accepted that there is no safe level of air pollution;<sup>8</sup> and whilst the LAQM objective levels and PM<sub>2.5</sub> targets are either achieved or are close to annual mean across Greater Cambridge it is important that focus shifts away from these target levels towards exposure reduction. The challenge is how pollutant levels can be

---

<sup>8</sup> [www.gov.uk/government/collections/comeap-reports](http://www.gov.uk/government/collections/comeap-reports)

maintained and further reduced whilst sustaining the scale of development and population increase coming forward in the next 10 – 20 years; supporting economic growth whilst continuing to improve air quality and deliver the health benefits that improved air quality brings. The primary objectives of the Strategy are:

- Continue to meet and deliver all legislative and policy requirements associated with air quality
- Continue to improve air quality across Greater Cambridge enhancing the health of those living, working and visiting Greater Cambridge
- Work towards World Health Organization Air Quality Guideline annual averages as longer term targets.

The World Health Organization (WHO) produced updated Air Quality Guidelines in 2021. These levels are based on the evidence linking concentrations of pollutants in ambient air with adverse effects on health and are levels that are proven to offer significant health benefits. The Committee on Medical Effects of Air pollution (COMEAP) considers these WHO 2021 guidelines as suitable long-term targets<sup>9</sup>. It is worth noting that they are set without reference to achievability. The WHO 2021 guidelines are lower than LAQM objective levels and PM<sub>2.5</sub> targets. Greater Cambridge exceeds the WHO 2021 guideline levels.

Table 1 compares the LAQM objective levels and national targets for key pollutants against the WHO 2021 guideline levels.

Pollutant	Averaging Period	Concentration	
		Current UK Limit	WHO 2021
<b>AQ (England) Regulations 2000 (Apply to LAQM)</b>			
PM <sub>10</sub> µg/m <sup>3</sup>	Annual Mean	40 µg/m <sup>3</sup>	15 µg/m <sup>3</sup>
	24 Hour Mean	50 µg/m <sup>3</sup>	45 µg/m <sup>3</sup>
NO <sub>2</sub> µg/m <sup>3</sup>	Annual Mean	40 µg/m <sup>3</sup>	10 µg/m <sup>3</sup>
	1 Hour Mean	200 µg/m <sup>3</sup>	N/A
<b>Environmental Targets (PM) Regulations 2023 (apply to national government to be achieved by 2040)</b>			
PM <sub>2.5</sub> µg/m <sup>3</sup>	Annual Mean	10 µg/m <sup>3</sup>	5 µg/m <sup>3</sup>
	Exposure Targets	35% Reduction compared to a 2018 baseline	N/A

Table 1: Air quality Objective Levels and Pollutant Targets

<sup>9</sup> COMEAP statement: response to publication of the World Health Organization Air quality guidelines 2021 - GOV.UK ([www.gov.uk](http://www.gov.uk))



It is acknowledged that not all sources of air pollution impacting Greater Cambridge originate from within Greater Cambridge. For some pollutants achieving these levels will require policy intervention not only locally but nationally and internationally. For example, up to a third of PM<sub>2.5</sub> within England originates from other countries. This means that setting timelines for achieving these levels may not be attainable at this time. However, commitment to work towards these levels will help drive continued improvements to air quality; enhancing the health of those living, working and visiting the Greater Cambridge area. The Strategy focuses on sources that can be influenced locally. We have developed local interim targets for delivery within the lifetime of the Strategy (5 years, 2024 to 2029 inclusive) based on the interim targets set by WHO:

Pollutant	Interim Target Level*	WHO 2021
PM <sub>10</sub> µg/m <sup>3</sup>	20 µg/m <sup>3</sup>	15 µg/m <sup>3</sup>
NO <sub>2</sub> µg/m <sup>3</sup>	20 µg/m <sup>3</sup>	10 µg/m <sup>3</sup>
PM <sub>2.5</sub> µg/m <sup>3</sup>	10 µg/m <sup>3</sup>	5 µg/m <sup>3</sup>

Table 2: Interim Annual Mean Target Levels

\*to be achieved by 2029

## 3.2 Delivering Air Quality Improvements across Greater Cambridge – Key Priorities

Continued improvements in air quality to meet the objectives of the Strategy across Greater Cambridge will be delivered under four key priority areas. Appendix B details measures to be implemented to deliver these priorities in the form of an Action Plan.

### Key Priority 1: Regulatory Policies & Development Control

Policies both national and local affect how air quality is prioritised by Local Authorities and their partners. We will continue to engage with national government and our partners to ensure that air quality is a key priority when setting out new policies. Local policy should be regularly updated in response to evolving national policy and updated evidence from public health.

At the strategic level, spatial planning can provide for more sustainable transport links between the home, workplace, educational, retail and leisure facilities, and identify appropriate locations for potentially polluting industrial development<sup>10</sup>. As such, land-use planning can play a critical role in improving local air quality.

Emissions from development may be associated with both the construction phase and from transport or combustion processes providing heat and power during the operational phase when the development is occupied / in use.

<sup>10</sup> IAQM & UKPE Land-Use Planning & Development Control: Planning For Air Quality (Jan 2017)

Some of the actions which can be taken include:

- Ensure regional and local policies seek to improve air quality and respond to evolving national policy and health based evidence
- Ensure developments of all sizes and type design out air quality impacts during both construction and operation phases working towards air quality neutral development<sup>11</sup>
- Ensure developments and policies are helping to meet LAQM Air Quality Objectives, PM<sub>2.5</sub> Targets and work towards WHO 2021 guideline levels by reducing emissions.
- Align with other policies aimed at increasing sustainability and reducing greenhouse gas emissions

Air quality is a material consideration under planning. Within the adopted Local Plans air quality is considered under Policy 36 (Air quality, Odour & Dust) of the Cambridge Local Plan (2018) and Policy SC/12 (Air Quality) of the South Cambridgeshire Local Plan (2018). The emerging Greater Cambridge Local Plan will consider air quality for both districts under a single policy.<sup>12</sup>

Air quality is further underpinned by the Greater Cambridge Sustainable Design and Construction Supplementary Planning Documents (SPD) (2020) and the adoption of this Great Cambridge Air Quality Strategy. These documents provide detail on measures that developers should consider at the design stage to minimise impact of development on air quality across Greater Cambridge.

It is important that council policies should drive air quality improvements across Greater Cambridge and not operate in isolation from other relevant policies e.g. Climate Change Strategy, Health Impact Assessments, Parking Strategy, taxi licensing.

Other policy areas (i.e. outside of planning policy) that impact on air quality include the adoption or amendment of Smoke Control Areas and how the council respond to reports of bonfires or nuisance complaints for example. The monitoring and enforcement of environmental permits is also a key regulatory aspect of controlling local emissions of air pollutants.

## **Key Priority 2: Infrastructure Improvements**

To enable the shift to more sustainable transport solutions, infrastructure improvements are required. Working with partners, Cambridge City and SCDC will ensure infrastructure improvements are planned and implemented to facilitate the increased uptake of public transport and active travel options. This will work alongside

<sup>11</sup> [www.london.gov.uk/programmes-strategies/planning/implementing-london-plan/london-plan-guidance/air-quality-neutral-aqn-guidance#:~:text=The%20Air%20Quality%20Neutral%20LPG,worsen%20air%20quality%20in%20London.](https://www.london.gov.uk/programmes-strategies/planning/implementing-london-plan/london-plan-guidance/air-quality-neutral-aqn-guidance#:~:text=The%20Air%20Quality%20Neutral%20LPG,worsen%20air%20quality%20in%20London.)

<sup>12</sup> [www.greatercambridgeplanning.org/emerging-plans-and-guidance/greater-cambridge-local-plan/](https://www.greatercambridgeplanning.org/emerging-plans-and-guidance/greater-cambridge-local-plan/)

Key Priority 1, where planning and development control can have a major impact on infrastructure provision in Greater Cambridge.

Some of the actions which can be taken include:

- Support public transport options available to the public and publicise these
- Freight consolidation / last mile deliveries
- Road hierarchy
- Off road cycle / walking paths
- Improvements to cycling and walking infrastructure
- Facilitate infrastructure improvements to electric vehicle charging
- Encourage the use of suitable green infrastructure where air quality benefits would be realised

### **Key Priority 3: Community Engagement & Promotion**

Our communities should be considered in all opportunities to benefit from improved air quality. This could be achieved through a range of actions big or small, such as provision of significant infrastructure to facilitate the uptake of low emission vehicles, to daily practical measures which in turn lead to protected and improved air quality. In parallel to measures to reduce resident and visitor exposure to pollutants we need to actively promote and engage with residents and visitors of Greater Cambridge enabling access to alternatives to the more polluting activities.

A key area will be reducing particulate emissions; most notably PM<sub>2.5</sub> from solid fuel burning (both indoors and outdoors). The following are some examples to consider for public engagement (but are not exhaustive):

- Improved public engagement through accessibility of air quality data and promoting awareness on air quality
- Working closely with UK Health Security Agency, Public Health and the NHS to deliver clear messages on the link between air quality and health
- National and regional campaigns such as Clean Air Day and Clean Air Night
- Work closely with partners to disseminate information county wide to maximise potential benefits within the area
- Promotion of a non-idling policy during collection and drop off near schools
- Promotion to reduce the use of solid fuel stoves and open fires and where they are used promote 'better burning' to minimise emissions.
- Promotion to reduce outdoor burning and where there are bonfires promote best practice
- Close partnership with local businesses to reduce emissions
- Work with Businesses to help reduce operational impacts on air quality
- Smart technologies – Help reduce the barriers to adopting more sustainable transport methods and active travel by enabling faster and more efficient journeys through smart technologies.

- Engage with the farming community to highlight the link between ammonia and particulate matter pollution.

#### **Key Priority 4: Monitoring**

Future growth across Greater Cambridge is largely residential and whilst planning policy is increasingly working towards reducing reliance on road based transport; in the short to medium term this is likely to remain a primary source of pollution across Greater Cambridge with commuting to Cambridge, London and the surrounding area. It is important to continue to monitor against LAQM objective levels focussing on historical areas with high levels of pollutants (AQMA areas) and focussing on major growth areas e.g. growth sites on the edge of Cambridge (West Cambridge, Eddington, Darwin Green, North East Cambridge, Marleigh, Land North of Cherry Hinton, etc), and also the new town growth in SCDC (Waterbeach, Northstowe, Bourne and Cambourne).

Given the scale of the future developments and the potential to introduce new hotspots where air quality could be at risk, the need for a robust and up to date monitoring network across the district is a priority. Therefore, the monitoring network should:

- Be subject to regular review and update to reflect the growth across Greater Cambridge
- Be compliant with the requirements under the LAQM framework
- Enable Local Authorities to monitor trends across their districts and identify 'hotspots' but also improvements in response to policy measures or interventions introduced.
- Consider and include new technologies and alternatives to traditional monitors enabling the Council to conduct short term monitoring in the areas of concern

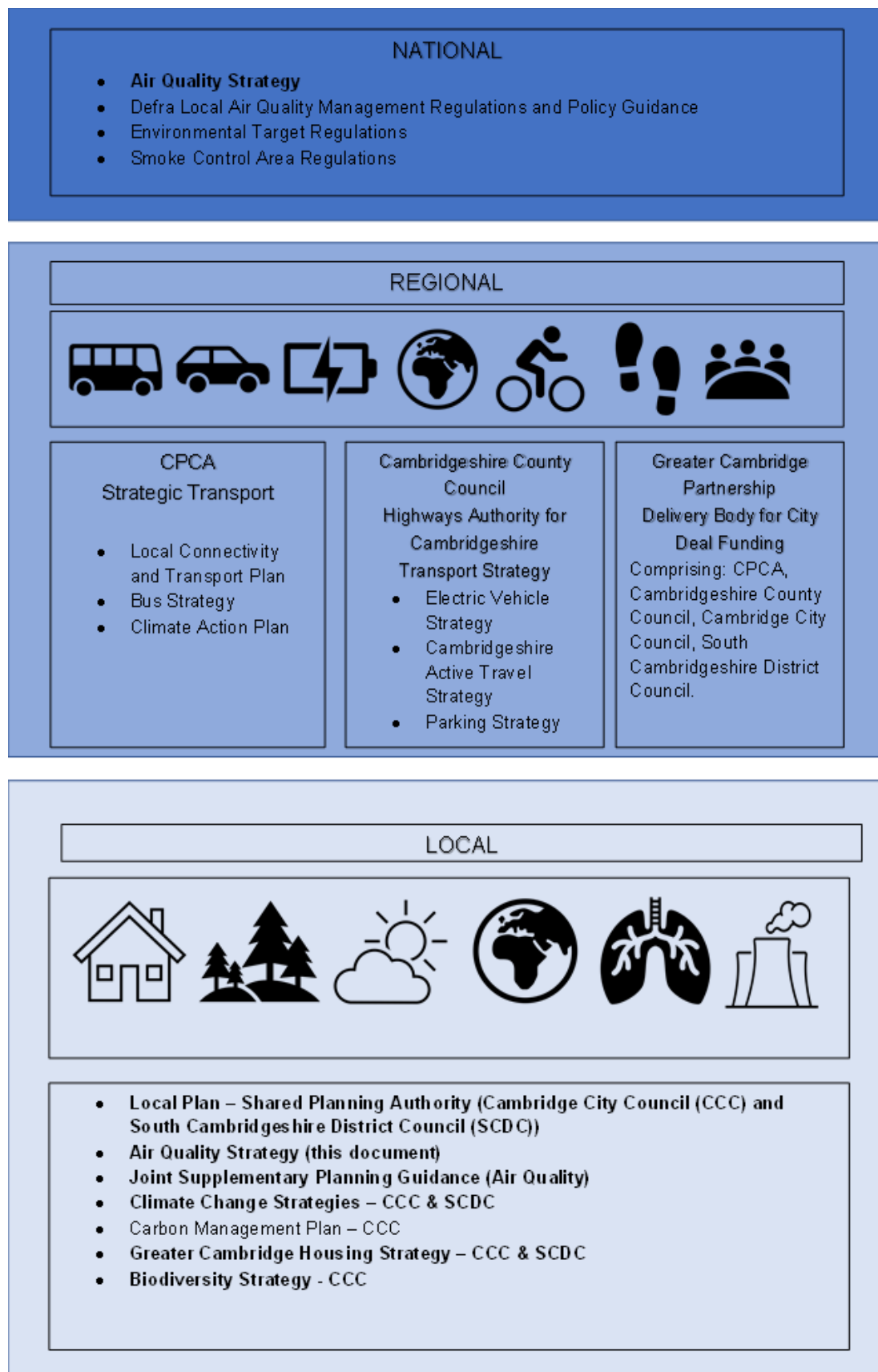
## **4. Co-Benefits Delivered by Air Quality Improvements**

### **4.1 How the Air Quality Strategy aligns with other key policies**

Air pollution can impact human health, the economy, and the environment. Whilst Local Authorities have the responsibility for monitoring air quality within their district, it is acknowledged that many of the changes needed are managed and implemented by wider partner organisations. Improved air quality indirectly overlaps and offers co-benefits across a wide range of agendas. Measures identified in the Greater Cambridge Air Quality Strategy to improve air quality can offer wider benefits and help deliver other local and regional agendas for example active travel, health inequalities and sustainability. It is important that air quality is not considered in isolation and that complimentary strategies and policies align where possible. Appendix C details complimentary and regional strategies which help deliver the wider air quality agenda.

The layers of local, regional and national policy and initiatives relevant to the Air Quality Strategy are presented in Figure 1.

**Figure 1 – Layers of Policy relevant to Air Quality Strategy**



## 4.2 Air Quality & Health

Air Pollution is a public health issue<sup>13</sup>. It is considered the largest environmental risk to the public's health contributing to cardiovascular disease, lung cancer and respiratory diseases. It is recognised as a contributing factor in the onset of heart disease and cancer.

Air Pollution increases the chances of hospital admissions, visits to Emergency Departments and respiratory and cardiovascular symptoms which interfere with everyday life, especially for people who are already vulnerable. Bad air quality affects everyone and it has a disproportionate impact on the young and old, the sick and the poor<sup>14,15</sup>.

Research undertaken by COMEAP concluded in 2019 that there is no safe level of particulates. Further work undertaken by COMEAP in 2022 concluded that, even low concentrations of pollutants are likely to be associated with adverse effects on health. Therefore, continued reductions, even where concentrations are below the air quality guidelines, are also likely to be beneficial to health.<sup>16</sup> The Public Health Outcomes Framework includes an indicator on mortality attributed to particulate matter.

The mortality burden of air pollution within the UK is equivalent to 29,000 to 343,000 deaths at typical ages<sup>17</sup>, with a total estimated healthcare cost to the NHS and social care of £157 million in 2017<sup>18</sup>.

Public Health data<sup>19</sup> indicates that in 2020, 48 deaths in Cambridge and 66 in South Cambridgeshire could be attributed to Particulate Air Pollution. This figure is calculated based on the number of deaths in Cambridge in 2020 and the Public Health Outcomes Framework Fraction mortality due to particulate air pollution. At this time PM<sub>2.5</sub> is considered the most suitable metric for evaluating health impacts.

Additionally, air pollution particularly affects the most vulnerable in society: children and older people, and those with heart and lung conditions. There is also a strong correlation with equalities issues, because areas with poor air quality are also often the less affluent areas.<sup>20,21</sup> There is clear evidence that PM<sub>2.5</sub> has a significant impact on human health, including premature mortality, cognitive decline, allergic reactions, and cardiovascular diseases. The WHO labelled air pollution as a risk factor for non-communicable diseases such as ischaemic heart disease, stroke, chronic obstructive pulmonary disease, asthma, cancer and the economic toll these diseases take. Air

---

<sup>13</sup> [www.gov.uk/government/publications/health-matters-air-pollution/health-matters-air-pollution](https://www.gov.uk/government/publications/health-matters-air-pollution/health-matters-air-pollution)

<sup>14</sup> Royal College of Physicians. Every breath we take: the lifelong impact of air pollution. Report of a working party. London: RCP, 2016.

<sup>15</sup> [Air Quality - A guide for directors of public health \(local.gov.uk\)](https://www.local.gov.uk/air-quality-a-guide-for-directors-of-public-health)

<sup>16</sup> [Committee on the Medical Effects of Air Pollutants \(COMEAP\): 2022 Annual Report \(publishing.service.gov.uk\)](https://www.publishing.service.gov.uk/government/uploads/system/uploads/attachment_data/file/108442/COMEAP-2022-Annual-Report.pdf)

<sup>17</sup> Defra. Air quality appraisal: damage cost guidance, January 2023

<sup>18</sup> Public Health England. Estimation of costs to the NHS and social care due to the health impacts of air pollution: summary report, May 2018

<sup>19</sup> [Public Health Outcomes Framework - Data - OHID \(phe.org.uk\)](https://www.phe.org.uk/public-health-outcomes-framework-data)

<sup>20</sup> Public Health England. Air Quality: A Briefing for Directors of Public Health, 2017

<sup>21</sup> Defra. Air quality and social deprivation in the UK: an environmental inequalities analysis, 2006

Pollution affects different aspects of health even at low concentrations<sup>22</sup>. COMEAP provided a statement in response to the WHO 2021 guidelines which regards them as suitable long-term targets<sup>23</sup> and that more recent evidence indicated that PM<sub>2.5</sub> had harmful effects on people's health at lower concentrations than had been studied previously.

### 4.3 Air Quality & Economic Growth

Poor air quality harms productivity by making people less healthy, increasing costs to society through medical and social care. There is growing evidence that air pollution is a significant contributor to preventable ill health and early death. These health impacts impose a cost on the UK economy that has been estimated to run into billions.

Reducing poor air quality has direct, proven economic benefits, in many cases even when the up-front cost over intervention is high. It is estimated that reducing PM<sub>2.5</sub> concentrations by 1µg/m<sup>3</sup> increases GDP by 0.8% on average in Europe<sup>24</sup>

Poor air quality can have a disproportionate impact on the young and old, the sick and the poor. Deprived communities are more likely to be situated near polluted busy roads and are more likely to experience adverse health impacts. Analysis of environmental quality and social deprivation carried out for the Environment Agency (2003) looked at the social distribution of the wards with the highest pollutant concentrations and concluded that more than half of the most exposed 5% of the population (2.5 million people) were resident in the 20% most deprived wards<sup>25</sup>. Part of the monitoring across Cambridge City considers pollutant levels within more deprived Wards with the potential to link in with objective 5- Improving health outcomes for people on low incomes of the Cambridge Anti Poverty Strategy.<sup>26</sup>

Greater Cambridge is a major growth area with significant growth in employment, housing and infrastructure planned for the next 10 years. Whilst supporting economic growth we need to manage where possible any wider impacts on the environment including air quality.

### 4.4 Air Quality & Net Zero

In 2019, the UK became the first major economy in the world to legislate to end our domestic contribution to man-made climate change. Both Cambridge City Council and South Cambridgeshire District Council declared a Climate Emergency in 2019 and are taking a wide range of actions, with partners, which will contribute to reducing

---

<sup>22</sup> WHO AQG 2021

<sup>23</sup> [COMEAP statement: response to publication of the World Health Organization Air quality guidelines 2021 - GOV.UK \(www.gov.uk\)](https://www.gov.uk/government/consultations/comeap-statement-response-to-publication-of-the-world-health-organization-air-quality-guidelines-2021)

<sup>24</sup> [The economic cost of air pollution: Evidence from Europe](https://www.oecd.org/air/2019/07/25/the-economic-cost-of-air-pollution-evidence-from-europe), Organisation for Economic Co-operation and Development (OECD)

<sup>25</sup> [www.gov.uk/government/publications/environmental-quality-and-social-deprivation](https://www.gov.uk/government/publications/environmental-quality-and-social-deprivation)

<sup>26</sup> [www.cambridge.gov.uk/anti-poverty-strategy](https://www.cambridge.gov.uk/anti-poverty-strategy)

emissions and adapting to climate change both on their own estates, and in the wider district.

Cambridge City Council shared a vision for Cambridge to be net zero carbon by 2030 as set out in its Climate Change Strategy 2021-2026<sup>27</sup> which also set a target to reduce its own carbon emissions to net zero by 2030<sup>28</sup>. South Cambridgeshire District Council's Zero Carbon Strategy outlines how SCDC are supporting the District to halve carbon emissions by 2030 and reduce them to zero by 2050, including delivering a reduction in their own carbon footprint of at least 45% by 2025 (on a 2019 baseline) and at least 75% by 2030<sup>29</sup> from a 2018/19 baseline.

Many sources of greenhouse gases, like transport and combustion emissions, also contribute to poor air quality. Actions which both reduce emissions and improve air quality will contribute towards this Air Quality Strategy as well as the Zero Carbon Strategy, such co-benefits should be recognised where possible to maximise their impacts. However, some measures to reduce greenhouse gas emissions are in tension with improving air quality; for example the use of solid fuel and biomass burning can lead to reduction in carbon emissions but lead to increases in particulates.

## 5 Conclusion

This document sets out the approach for the Greater Cambridge Air Quality Strategy for maintaining and improving air quality across Greater Cambridge. It has three key objectives delivered through four key priority areas: Regulatory Policies & Development Control, Infrastructure Improvements, Community Engagement & Promotion and Monitoring. Measures for delivering the individual priorities is included in Appendix B in the form of an Action Plan. Reporting on the delivery of these key priorities will be via quarterly steering group meetings and within the individual Council's Air Quality Annual Status Report each year, which is available on council websites.

---

<sup>27</sup> [Climate Change Strategy - Cambridge City Council](#)

<sup>28</sup> [Carbon management plan - Cambridge City Council](#)

<sup>29</sup> [Zero carbon strategy - South Cambs District Council \(scambs.gov.uk\)](#)



## Appendix A - Legislative and Policy Background

### Statutory Requirements under Local Air Quality Management (LAQM)

Local Authorities have a statutory duty under the requirements of the Local Air Quality Management (LAQM) Framework as set out in Part IV of the Environment Act (1995) and as amended by the Environment Act 2021, to review and assess local air quality within their areas, against a set of air quality objectives and to determine whether or not these are likely to be achieved. Where an exceedance is considered likely the local authority must declare an Air Quality Management Area (AQMA) and prepare an Air Quality Action Plan (AQAP) setting out the remedial measures it intends to put in place in pursuit of these objectives. Table 1 below details the statutory air quality objectives applicable to LAQM in England.

Pollutant	Air Quality Objective: Concentration <sup>30</sup>	Air Quality Objective: Measured as
Nitrogen Dioxide (NO <sub>2</sub> )	200µg/m <sup>3</sup> not to be exceeded more than 18 times a year	1-hour mean
Nitrogen Dioxide (NO <sub>2</sub> )	40µg/m <sup>3</sup>	Annual mean
Particulate Matter (PM <sub>10</sub> )	50µg/m <sup>3</sup> , not to be exceeded more than 35 times a year	24-hour mean
Particulate Matter (PM <sub>10</sub> )	40µg/m <sup>3</sup>	Annual mean
Sulphur Dioxide (SO <sub>2</sub> )	350µg/m <sup>3</sup> , not to be exceeded more than 24 times a year	1-hour mean
Sulphur Dioxide (SO <sub>2</sub> )	125µg/m <sup>3</sup> , not to be exceeded more than 3 times a year	24-hour mean
Sulphur Dioxide (SO <sub>2</sub> )	266µg/m <sup>3</sup> , not to be exceeded more than 35 times a year	15-minute mean

Table 1: Air Quality Objectives in England<sup>31</sup>

<sup>30</sup> The units are in microgrammes of pollutant per cubic metre of air (µg/m<sup>3</sup>).

<sup>31</sup> PG22 LAQM page 78

Cambridge City established an AQMA around the central core of the city in 2004 and SCDC along the A14 between Bar Hill (to the north-west of Cambridge) and Milton interchange (to the north-east) in 2008, both due to exceedances in NO<sub>2</sub>. SCDC has recently revoked its AQMA and Cambridge City is in the process of revoking theirs as objective levels of NO<sub>2</sub> have been achieved.

Local Authorities are required to submit an Annual Status Report (ASR). This details the results of any monitoring undertaken across the district, conclusions derived from the results, amendments made to the network in response to changing pollutant trends and actions being undertaken to improve air quality and any progress that has been made on these.

Amendments to the LAQM framework under the Environment Act 2021 require Local Authorities to have an Air Quality Strategy where objective levels of key pollutants are achieved. The Strategy should set out steps the Local Authority will take to continue to improve local air quality. The purpose of the Air Quality Strategy is to take preventative action to improve local air quality and reduce the long term health impacts and should be developed in consultation with the Director of Public Health. In addition given the transboundary nature of air pollution Local Authorities are required to work collaboratively with neighbouring authorities to tackle pollution sources outside the Local Authorities area.

## **Air Quality Strategy: Framework for Local Authority Delivery (2023) – Local Action to reduce PM<sub>2.5</sub>**

The revised National Air Quality Strategy (2023) sets out a framework to enable Local Authorities to deliver long term air quality improvements and meet long term air quality goals. This includes two new legally-binding long-term targets to reduce concentrations of fine particulate matter less than 2.5 microns in diameter (PM<sub>2.5</sub>) as set out in the Environmental Targets Regulations 2023.

- 10 µg/m<sup>3</sup> annual mean concentration PM<sub>2.5</sub> nationwide by 2040, with an interim target of 12 µg/m<sup>3</sup> by January 2028
- 35% reduction in average population exposure by 2040, with an interim target of a 22% reduction by January 2028, both compared to a 2018 baseline

These targets will help drive reductions in the worst PM<sub>2.5</sub> hotspots across the country, whilst ensuring nationwide action to improve air quality for everyone. Whilst not currently included as part of the LAQM framework all Local Authorities are expected to effectively use their powers to reduce PM<sub>2.5</sub> emissions from sources which are within their control. Whilst it is acknowledged many sources of PM<sub>2.5</sub> originate from outside the Local Authority boundary there are some sources of PM<sub>2.5</sub> over which Local Authorities do have control.

## World Health Organization (WHO) Air Quality Guidelines (2021)

In September 2021 WHO published updated Air Quality Guidelines (AQG) for common pollutants including interim targets to promote a gradual shift from high to lower concentrations to help countries achieve air quality that protects public health.

The WHO Air Quality Guidelines are based on the evidence linking concentrations of pollutants in ambient air with adverse effects on health. They are set without reference to achievability.

Pollutant	Averaging Time	Interim Target	AQG Level
PM <sub>2.5</sub> µg/m <sup>3</sup>	Annual	10	5
	24 Hour	25	15
PM <sub>10</sub> µg/m <sup>3</sup>	Annual	20	15
	24 Hour	50	45
NO <sub>2</sub> µg/m <sup>3</sup>	Annual	40	10
	24 Hour	-	25
SO <sub>2</sub> µg/m <sup>3</sup>	24 Hour		40

Table 2: Recommended WHO 2021 AQG levels and interim targets

## Appendix B: Action Plan - Measures for delivering key priorities

### Key Priority 1: Regulatory Policies & Development Control

Broad Measure	Project / s	Details	Impact	Progress	Lead Delivery Body	Area Covered
<b>Control of emissions through planning – Operational Phase</b>	Requirements to design out emissions from all new developments	Where technically viable: Provide active travel provision, cycle parking, car clubs, EVCP, alternatives to combustion emissions for heating and hotwater provision built into development design	Aim to achieve air quality neutral development	SPD in place for Cambridge City; Low Emission Strategy for major development in SCDC	Greater Cambridge Shared Planning Service	Greater Cambridge
<b>Control of emissions through planning – Construction Phase</b>	Requirements to minimise emissions through conditions to control dust and emissions from non road mobile machinery	Through conditions minimise emissions during the construction phase	Minimise emissions during construction phase	Sustainable Design and Construction SPD, Policy 36 Cambridge City and Policy SC/14 SCDC of relevant local plans	Greater Cambridge Shared Planning Service	Greater Cambridge

Broad Measure	Project / s	Details	Impact	Progress	Lead Delivery Body	Area Covered
	(NRMM) where appropriate					
<b>Electric Vehicle Charge Points (EVCP) – Car Parks</b>	Provision of active and passive EVCP within all new / expanded and refurbished car parks	Minimum of 25% active and 75% passive EVCP provision. Active mix of slow (Min 7kW), fast (min 24kW) and rapid depending on end use	Enable uptake of electric vehicles through provision of infrastructure	Delivered in Cambridge City through SPD.	Environmental Health – Cambridge City / Greater Cambridge shared Planning Service	Greater Cambridge
<b>Reduce emissions from emergency / back-up generators</b>	Requirement to pursue alternatives to diesel generators	Where back up / emergency generators are required alternatives to diesel are required, particularly for sites in urban areas and adjacent to residential receptors	Improve public health, reduce potential for localised hotspots	Under Development	Cambridge City Council	Greater Cambridge but primarily targeted in Cambridge City and urban areas
<b>Reduce PM<sub>2.5</sub> emissions from solid fuel burning</b>	Smoke Control Area (SCA) - Review	Opportunity to reduce contribution of PM <sub>2.5</sub> from solid fuel burning in the city through review of boundaries of SCA, look at options including whether to include moorings within SCA, and if changes	Reduce background PM <sub>2.5</sub> levels	Taking options to committee in Autumn 2024	Cambridge City Council – Environmental Health	Cambridge City Only

Broad Measure	Project / s	Details	Impact	Progress	Lead Delivery Body	Area Covered
		<p>proposed carry out consultation.</p> <p>Update Guidance and policy in response to changes to legislation</p>				
<b>Processes</b>	Environmental Permits	Review Environmental Permits / Best Available techniques (BAT)	Minimise emissions in line with legislation and Section 4.2 of National Air Quality Strategy	Ongoing as part of legislative requirements	Cambridge City and SCDC Environmental Health departments	Cambridge City and SCDC
	Commercial Process	All new commercial processes to fulfil licencing requirements and consider emissions	Minimise emissions in line with legislation and Section 4.2 of National Air Quality Strategy	Ongoing as part of legislative requirements	Cambridge City and SCDC Environmental Health departments	Cambridge City and SCDC
<b>Guidance &amp; Policy</b>	Low Emission Taxis Policy	Taxi Policy to encourage low emission vehicles	Reduce emissions within urban city centres	Cambridge City - going back to licencing committee in January 2024 to	Cambridge City & SCDC have separate policies	Cambridge City and SCDC

Broad Measure	Project / s	Details	Impact	Progress	Lead Delivery Body	Area Covered
				discuss extension of policy to allow hybrid vehicles		
	Greater Cambridge Emerging Local Plan - Air Quality Policy	Policy to deliver ongoing air quality improvements. Policy needs to link succinctly with other relevant policies and ensure they do not conflict. For example: Health Impact Assessment (HIA), parking provision (Car and cycle), Climate Change and Sustainability	Aim to achieve air quality neutral developments	Ongoing	Greater Cambridge Shared Planning Service	Greater Cambridge
	Emerging Local Plan – Health Impact Assessment (HIA)	Requirement for major developments to undertake a Health Impact Assessment (HIA)	Improve public Health	Ongoing	Greater Cambridge Shared Planning Service	Greater Cambridge

Broad Measure	Project / s	Details	Impact	Progress	Lead Delivery Body	Area Covered
	Greater Cambridge Air Quality Strategy	Develop strategy to align with emerging Local Plan policy	Deliver continued air quality improvements	Being taken to respective committees in March / April 2024 for Adoption	Cambridge City & SCDC	Greater Cambridge
	County Wide Strategies which help deliver air quality improvements	See Appendix C for details of strategies and relevant links	Co-ordinate delivery of measures which offer improved air quality as a co-benefit	Ongoing	Various	Cambridgeshire
<b>Reduce Council Emissions</b>	Cambridge City Climate Change Strategy & SCDC Zero Carbon Strategy	Co-benefits for air quality as part of councils' commitment to become net zero carbon	Reduce Council operational emissions	Ongoing	Cambridge City & SCDC	Cambridge City & SCDC



## Key Priority 2: Infrastructure Improvements

Broad Measure	Project / s	Details	Impact	Progress	Lead Delivery Body	Area Covered
<b>Active Travel</b>	Greenways	Twelve Greenways feeding into Cambridge allowing walkers, cyclists and other non motorised vehicle users to travel safely and sustainably	The Greenways will make it easier and more pleasant to travel in and out of Cambridge in a sustainable way. They'll also help make local journeys like school runs safer and easier. Where possible they will link to other active travel projects like the Chisolm Trail.	Various projects either delivered or under development <a href="http://www.greatercambridge.org.uk/sustainable-transport-programme/active-travel-projects">www.greatercambridge.org.uk/sustainable-transport-programme/active-travel-projects</a>	Greater Cambridge Partnership (GCP)	Greater Cambridge
	Chisholm Trail 2	Second part of the Chisholm Trail project to provide walking and cycling route	Reduce vehicle emissions	Phase 1 completed in 2022, Phase 2 under Construction <a href="http://www.greatercambridge.org.uk/sustainable-transport-programme/active-travel-projects/chisholm-trail">www.greatercambridge.org.uk/sustainable-transport-programme/active-travel-projects/chisholm-trail</a>	Greater Cambridge Partnership (GCP)	Greater Cambridge

Broad Measure	Project / s	Details	Impact	Progress	Lead Delivery Body	Area Covered
		across the City.				
	Cycling plus improvements	Prioritised list of additional walking, cycling and active travel schemes in Greater Cambridge to create additional links within the wider active travel network	Current Schemes include Hills Road, Addenbrookes Roundabout and A1134	<a href="http://www.greatercambridge.org.uk/sustainable-transport-programme/active-travel-projects/addenbrookes-roundabout">www.greatercambridge.org.uk/sustainable-transport-programme/active-travel-projects/addenbrookes-roundabout</a>  <a href="http://www.greatercambridge.org.uk/sustainable-transport-programme/active-travel-projects/hills-road">www.greatercambridge.org.uk/sustainable-transport-programme/active-travel-projects/hills-road</a>	Greater Cambridge Partnership (GCP)	Greater Cambridge
	Hire Schemes for bikes and scooters	Various cycle and scooter hire schemes operating in Cambridge. Expansion of	Facilitate uptake of bikes providing alternative to cars.	Ongoing	Cambridgeshire County Council	Greater Cambridge

Broad Measure	Project / s	Details	Impact	Progress	Lead Delivery Body	Area Covered
		these schemes to allow bike hire at P&R sites.				
<b>Public Transport Improvements</b>	Corridor Schemes	Four corridor schemes to offer better public transport and active travel routes along corridors, identified as essential to link growing communities in the north, south, east and west.	The four schemes are Cambourne to Cambridge, Waterbeach to Cambridge, Cambridge East and Cambridge South East	See Public Transport Schemes <a href="http://www.greatercambridge.org.uk/sustainable-transport-programme/public-transport-schemes">www.greatercambridge.org.uk/sustainable-transport-programme/public-transport-schemes</a>	Greater Cambridge Partnership (GCP)	Greater Cambridge
	Cambridge South Station	New railway station acting	New destination station to facilitate travel to	Under Construction	Network Rail	Cambridge City

Broad Measure	Project / s	Details	Impact	Progress	Lead Delivery Body	Area Covered
		as a destination station for the Cambridge Biomedical Campus and Addenbrookes.	Cambridge Biomedical Campus, reducing need for car travel.			
	Active Travel and Bus Priority Schemes	Schemes in Cambridge to improve active travel and prioritise bus routes into and out of the City. Includes: Milton Road, Newmarket Road.	Increase uptake of public transport	Various projects either delivered or under development <a href="http://www.greatercambridge.org.uk/sustainable-transport-programme/active-travel-projects">www.greatercambridge.org.uk/sustainable-transport-programme/active-travel-projects</a>	Greater Cambridge Partnership (GCP)	Greater Cambridge
	Travel Hubs	10,000 additional park and ride	Includes a new Travel Hub at Cambridge South West	<a href="http://www.greatercambridge.org.uk/sustainable-transport-programme/other-transport-">www.greatercambridge.org.uk/sustainable-transport-</a>	Greater Cambridge	Greater Cambridge

Broad Measure	Project / s	Details	Impact	Progress	Lead Delivery Body	Area Covered
		spaces for people to switch to sustainable transport	as well as hubs linked to corridor schemes.  New facilities will have charging points for electric vehicles	<a href="#">schemes/cambridge-south-west-travel-hub-1</a>	Partnership (GCP)	
	New Station for Waterbeach	Relocating the current Waterbeach railway station to provide a rail link for the new town as per the planning application	Facilitating the shift from private vehicle use	<a href="http://www.greatercambridge.org.uk/news/proposal-for-major-investment-to-unlock-thousands-of-new-homes-published">www.greatercambridge.org.uk/news/proposal-for-major-investment-to-unlock-thousands-of-new-homes-published</a>	Greater Cambridge Partnership (GCP)	Greater Cambridge
	Bus Network	Projects to increase number of electric buses, bus franchising	Reduce Emissions from buses.  Provision of public transport network to reduce need for private vehicles.	Electric Vehicle Implementation Strategy to be finalised in 2024	Cambridgeshire & Peterborough Combined Authority (CPCA)	Greater Cambridge

Broad Measure	Project / s	Details	Impact	Progress	Lead Delivery Body	Area Covered
		options and bus services and reform work.				
<b>Wider Network</b>	Car Club Contract	Contract set up to deliver new car club vehicles as need identified. Expectation of shift towards electric vehicles where infrastructure exists	Reduce reliance on private car ownership in existing residential areas	Contract in place – reactive as need identified	Cambridge City Council – Parking Services	Cambridge City
	City Centre Heat Network	City centre heat network. Consortium bid for money business case	Reduce emissions within historic city centre	Funding being sought	Cambridge University	Cambridge City

Broad Measure	Project / s	Details	Impact	Progress	Lead Delivery Body	Area Covered
		proposal – large buildings, not residential – phased approach				
	EV Charging On-Street	Enabling electric vehicle ownership for residential streets with no off street parking – e.g. lamp column chargers, pavement parking and charging facilities for electric bikes / cargo bikes, pavement	Enabling infrastructure within existing residential areas to facilitate shift to zero emission vehicles	Post in place to help deliver this	Cambridgeshire County Council	Greater Cambridge

Broad Measure	Project / s	Details	Impact	Progress	Lead Delivery Body	Area Covered
		gullies for charging cables				
	SCDC EV charging community Scheme	Money available to install EV charge points in SCDC as identified by communities within SCDC	Enabling Infrastructure within existing residential areas to facilitate shift to zero emission vehicles.	<a href="http://www.scambs.gov.uk/climate-emergency-and-nature/grants-funding-and-community-support/electric-vehicle-charge-point-grant/">www.scambs.gov.uk/climate-emergency-and-nature/grants-funding-and-community-support/electric-vehicle-charge-point-grant/</a>	SCDC	SCDC
	Electric Vehicle charging in City Centre Car Parks	Contract in place to install EV charge points in all City Centre car parks	Facilitate shift to zero emissions vehicles	Charge points in place in some council car parks including Adam and Eve and Queen Anne. Ongoing at other sites	Cambridge City Council – Parking Services	Cambridge City



Broad Measure	Project / s	Details	Impact	Progress	Lead Delivery Body	Area Covered
	Council Fleet – transition to Electric vehicles starting with Waste Fleet	Planned upgrade of all fleet vehicles to electric. The Councils are delivering the £5.7m Waterbeach Depot Solar Park project, including funding from the CPCA. This will enable more of the waste collection fleet to go electric.	Part of council vision for council to be Net Zero carbon offering air quality co-benefits	Ongoing	Cambridge City and SCDC Councils  Greater Cambridge Shared Waste	Greater Cambridge

Broad Measure	Project / s	Details	Impact	Progress	Lead Delivery Body	Area Covered
	Pilot Freight Partnerships	Feasibility Study to assess to possibility of having a freight consolidation scheme for City Centre businesses.	Reduce emissions from freight deliveries in Cambridge City Centre	Ongoing	Greater Cambridge Partnership (GCP)GCP	Greater Cambridge
	Road / Network Classification	GCP have undertaken consultation on a new road network classification for Cambridge	Consultation explored changing the way that traffic and people use roads to move around the city. Space on the roads could be freed up for more frequent and more reliable public transport. It could also create a safer and more attractive	Consultation feedback to be published in 2024	Greater Cambridge Partnership (GCP)	Cambridge City

Broad Measure	Project / s	Details	Impact	Progress	Lead Delivery Body	Area Covered
			environment for people walking and cycling. .			
	Heavy Goods Vehicles (HGV)	<p>Improve information fed into HGV sat navs to cover all weight and height restrictions.</p> <p>Engagement with Road Haulage Association to encourage hauliers to use HGV specific sat navs</p>	Reduce emissions	Work commenced	Cambridgeshire County Council	Greater Cambridge

Broad Measure	Project / s	Details	Impact	Progress	Lead Delivery Body	Area Covered
	Integrated Parking Strategy, including on-street parking controls such as residential parking schemes	GCP and partners are working on an integrated parking strategy looking at how parking in Greater Cambridge could be better managed to achieve sustainable transport objectives.	Potential to make better use of on-street, off-street and park and ride facilities to encourage sustainable travel	Vision for Parking Strategy adopted 2022, working on Action Plan	Cambridgeshire County Council and partners	Greater Cambridge
<b>Boats &amp; Moorings</b>	Alternatives to solid fuel	Options for upgrading the energy sources	Reduce emissions most notable PM <sub>2.5</sub>	New Project	Cambridge City Council –	Cambridge City

Broad Measure	Project / s	Details	Impact	Progress	Lead Delivery Body	Area Covered
		available for boats in the City (irrelevant of SCA) Feasibility of installing electric charging.			Environmental Health	
<b>Reducing Council Emissions</b>	Cowley Road Depot Improvements	EVCP infrastructure to facilitate uptake of electric fleet	Part of council vision for Council to be Net Zero carbon offering air quality co-benefits	Ongoing	Cambridge City Council	Cambridge City
<b>Offset Emissions</b>	Green Infrastructure	Offset Emissions through the use of green infrastructure – planting of trees &	There is some evidence to suggest that within certain locations the planting of trees and / or hedgerows can absorb certain	In development	Cambridge City and SCDC	Greater Cambridge

Broad Measure	Project / s	Details	Impact	Progress	Lead Delivery Body	Area Covered
		Hedgerows where appropriate	pollutants and / or act as a barrier.  Further research required			

**Key Priority 3: Community Engagement, Promotion and Research**

Broad Measure	Project / s	Details	Impact	Progress	Lead Delivery Body	Area Covered
<b>Promotion of alternative to private vehicle use</b>	Active Travel Campaign	Work closely with the new Active Travel Team. Combined Authority and County have new Active Travel Teams that will be working with Active Travel England to bring forward improvements and promote active travel alternatives.	Reduce reliance on private vehicles and emissions from these.	Ongoing	Cambridgeshire County Council	Cambridgeshire

Broad Measure	Project / s	Details	Impact	Progress	Lead Delivery Body	Area Covered
	Businesses	Workplace travel planning. Engagement with businesses, to reduce emissions from their activities. Business forums – education and awareness raising.	Reduce reliance on private vehicles and reduce emissions associated with business activities.	Ongoing	Cambridge City & SCDC	Greater Cambridge
	Schools	Work with the Road Safety and Active Travel teams to promote and facilitate sustainable and active travel to school by school children and parents School travel plans and School Streets	Reduce reliance on private vehicles and emissions associated with these.	Ongoing	Cambridgeshire County Council and wider partners	Greater Cambridge
	Doctors / Owl bikes project	Promote clean air quality and travel alternatives working with GPs,	Reduce reliance on private vehicles and	Bid for funding submitted to Defra in October 2023.	Cambridgeshire County Council	Greater Cambridge

Broad Measure	Project / s	Details	Impact	Progress	Lead Delivery Body	Area Covered
		Cambridgeshire County Council and Cambridge and Peterborough Combined Authority (CPCA).	emissions associated with these.	Current bid for funding with Cambridgeshire County Council	and wider partners	
<b>General Air quality awareness Raising</b>	General	Proactive and reactive messages via Website, leaflets, social media, radio, local television  Develop communications strategy	Shift in behaviour to reduce pollution emissions	Cambridge City in process of developing communications strategy	All Partners	Greater Cambridge
	Specific promotional days	Clean Air Day (June), Clean Air Night (Jan), Car Free Day (September), Cycle to Work Month (September) & Walking Month (May)	Shift in behaviour to reduce pollution emissions	As required	All Partners	Greater Cambridge
	Website	Update of District Council websites in line with	Shift in behaviour to reduce pollution	Ongoing	Cambridge City and SCDC	Greater Cambridge



Broad Measure	Project / s	Details	Impact	Progress	Lead Delivery Body	Area Covered
		National Air Quality Strategy	emissions, access to air quality data			
<b>Links with Climate change Work</b>	General	Education on the linkages between climate change and air quality Education links on energy reduction/implementation of energy efficiency measures	Shift in behaviour to reduce pollution emissions	Ongoing	Cambridge City, SCDC, Cambridgeshire County Council	Greater Cambridge
<b>Engagement with Farming Community</b>	Various engagement methods	Engagement with farming community to highlight the links between ammonia and particulate air pollution.	Reduce ammonia emissions	In development	SCDC, Natural England	SCDC
<b>Dissemination of Air Quality Data</b>	Website	Air quality data is available on several platforms including council websites, UK Air, Air Quality Index. Ensuring general public	Public Health benefits	Ongoing	Cambridge City Council and SCDC	Greater Cambridge

Broad Measure	Project / s	Details	Impact	Progress	Lead Delivery Body	Area Covered
		are aware of where this data can be found and how it can be used				
<b>Anti Idling</b>	General	Whilst neither Councils have powers for enforcement this is a high profile issue that would benefit from education and awareness raising.	Shift in behaviour to reduce pollution emissions & Public Health benefits	Ongoing	Cambridge City Council and SCDC	Greater Cambridge
<b>Reporting Progress</b>	Steering Group Meeting	Quarterly meetings with partners  Engagement with partners at these meeting important to keep air quality on the agenda	Sharing of information and progress report	Ongoing – quarterly meetings	Cambridge City Council	Greater Cambridge
	Annual update on progress of report	Production of Annual Status Report (ASR) for DEFRA. Publicly	Sharing of information and progress report	Annual Report	Cambridge City and SCDC	Cambridge City & SCDC

Broad Measure	Project / s	Details	Impact	Progress	Lead Delivery Body	Area Covered
		available on council website				
Reducing Particulate Emissions	Promote reduced and / or 'better burning'	Solid fuel burning both indoors and outdoors (e.g. bonfires) is a source of particulates within Greater Cambridge.	Reduce particulates within Greater Cambridge; most notably PM2.5	ongoing	Cambridge City and SCDC	Greater Cambridge

#### **Key Priority 4: Monitoring**

Broad Measure	Project / s	Details	Impact	Progress	Lead Delivery Body	Area Covered
<b>Monitoring</b>	Maintain monitoring network	Need to ensure monitors are maintained in compliance with LAQM guidelines to ensure that data is robust.	Assessment of compliance with WHO targets	Ongoing – Statutory Requirements	Cambridge City & SCDC	Cambridge City & SCDC
	Review monitoring network	Need to ensure that monitors are placed to capture the changes in	Assessment of compliance with WHO targets	Ongoing – Statutory Requirements	Cambridge City & SCDC	Cambridge City & SCDC

Broad Measure	Project / s	Details	Impact	Progress	Lead Delivery Body	Area Covered
		air pollution as area is developed and changes made to infrastructure				
	New Monitoring techniques	Continue to keep up to date with new technologies for monitoring air pollutants / working with partners	Ensuring cost effective and accurate methods are used to assess compliance with WHO targets.	Ongoing	Cambridge City & SCDC	Cambridge City & SCDC
	Modelling	Modelling impact of fringe developments without STZ  With scale of development predicted in local plan with no interventions Links to work already undertaken by GCP	Provide data on the effects on air quality of future proposed actions.	Ad Hoc	Cambridge City & SCDC	Greater Cambridge
	Wind Cap Project	Funding secured from Cambridgeshire County Council for 3 year project	Assessing effect of changes in meteorological	Ongoing – Began in April 2023	Cambridge City	Cambridge City

Broad Measure	Project / s	Details	Impact	Progress	Lead Delivery Body	Area Covered
		to measure nitrogen dioxide (NO <sub>2</sub> ) using diffusion tubes both with and without a wind cap	conditions on accuracy of data provided by traditional monitoring techniques			
	Smogmobile Project	Cambridgeshire County Council funding secured for project to measure emissions along key roads in Cambridge at peak hours with scope to look at producing interactive maps to plan walking routes minimising exposure	Behavioural Change and public Health Benefits	Funding secured. Work to being in 2024	Cambridge City	Cambridge City
<b>Agriculture</b>	General	Consideration of ammonia emissions from farming. Reference in National Air Quality Strategy (Section 4.4.) further consideration required	Unknown	Unknown	SCDC	SCDC

**Appendix C: District, County and regional strategies which help deliver Air Quality objectives within Greater Cambridge**

Strategy	Details	Information / Link
<b>Greater Cambridge Sustainable Design and Construction SPD (2020)</b>	Details requirements relating to sustainability for new developments across Greater Cambridge including air quality	<a href="http://www.cambridge.gov.uk/greater-cambridge-sustainable-design-and-construction-spd">www.cambridge.gov.uk/greater-cambridge-sustainable-design-and-construction-spd</a> or <a href="http://www.scambs.gov.uk/media/final-greater-cambridge-sus-dc-spd">www.scambs.gov.uk › media › final-greater-cambridge-sus-dc-spd</a>
<b>Cambridge Local Plan (2018)</b>	Within the City air quality is considered under Policy 36 (Air quality, Odour & Dust)	<a href="http://www.cambridge.gov.uk/media/local-plan-2018">www.cambridge.gov.uk › media › local-plan-2018</a>
<b>South Cambridgeshire Local plan (2018)</b>	Within SCDC air quality is considered under Policy SC/12 (Air Quality)	<a href="http://www.scambs.gov.uk/planning/local-plan-and-neighbourhood-planning/the-adopted-development-plan/south-cambridgeshire-local-plan-2018/">www.scambs.gov.uk/planning/local-plan-and-neighbourhood-planning/the-adopted-development-plan/south-cambridgeshire-local-plan-2018/</a>
<b>Cambridgeshire and Peterborough Local Transport and Connectivity Plan (LTCP)(CPCA 2023)</b>	<p>The LTCP is the CPCA’s long-term strategy to make transport in Cambridgeshire and Peterborough better faster, greener, and more accessible for everyone. The LTCP is a statutory document and any transport project must fit in with its vision, strategy and policies.</p> <p>It sets the context for investing in a joined-up, net zero carbon transport system, which is high quality, reliable, convenient, affordable, safe, and accessible to everyone.</p> <p>Better, cleaner public transport will reduce private car use, and more cycling and walking will support both healthier lives and a greener region. Comprehensive connectivity, including digital improvements, will support a sustainable future for our region’s nationally important and innovative economy.</p>	<a href="http://cambridgeshirepeterborough-ca.gov.uk/CPCA-LTCP-Strategic-Document.pdf">CPCA-LTCP-Strategic-Document.pdf (cambridgeshirepeterborough-ca.gov.uk)</a>

Strategy	Details	Information / Link
	<p>As well as an overall strategy for Cambridgeshire and Peterborough, the LTCP includes a section setting out a local strategy for Greater Cambridge, as well as making provision for a more detailed Greater Cambridge Transport Strategy to be produced in due course.</p> <p>The LTCP sets a target of a 15% reduction in vehicle kilometres by 2030.</p> <p>To deliver the LTCP’s overarching vision, Combined Authority will use existing measures and develop new ones that align with the following three principles: Avoid (unnecessary travel); Shift (to more sustainable modes); Improve (operational efficiency and journey experience).</p>	
<p><b>Cambridgeshire and Peterborough Bus Strategy (CPCA 2023)</b></p>	<p>This strategy sets out the main principles to achieve bus ambitions, including to more than double bus patronage by 2030. More details of how this will be delivered and funded are set out in the Bus Service Improvement Plan (BSIP). The Strategy and BSIP will be regularly reviewed to reflect changing circumstances and to push continuous improvement.</p>	
<p><b>East Anglian Alternative Fuel Strategy (Combined</b></p>	<p>Electric Vehicle Implementation Strategy to be finalised in 2024</p>	



Strategy	Details	Information / Link
<b>Authority 2023) and Draft Electric Vehicle Implementation Plan (CPCA 2023)</b>	£88,560 from the Local Electric Vehicle Infrastructure (LEVI) Capability Fund is supporting Cambridgeshire County Council activity. CPCA bid for indicative £5.4m of LEVI capital funding and additional capability funding was successful – in 2024 the business case will be developed to drawdown this funding.	
<b>CPCA – Alternative Vehicles Strategy</b>	East Anglian Alternative Fuels Strategy approved by CPCA March 2023. As a part of the Local Transport and Connectivity a Draft EV Implementation Plan was also agreed March 2023. Currently, the EV strategy focuses on five key areas for delivery including: Charging Infrastructure, Charge Point Accessibility, Communication, Advocacy and Outreach, Public and Shared Transport and Planning, Regulation, and Guidance.	
<b>Climate Action Plan (CPCA 2022)</b>	The Combined Authority’s Climate Action Plan sets out actions that will be beneficial to air quality. This includes the key action to reduce overall vehicle mileage by 15% by 2030, subsequently incorporated into the LTCP. Other actions that are relevant include supporting waste collection and disposal to be more sustainable. Specific funding has been allocated to enable the redevelopment of Waterbeach depot to generate renewable energy to charge an electric waste collection fleet	
<b>Climate Change Strategies</b>	The Cambridge & Peterborough Climate Action Plan sets out actions to reduce emissions. This includes for businesses, buildings, transport, waste and energy use.	CPCA Climate Action Plan:

Strategy	Details	Information / Link
	<p>Link to actions in this strategy such as waste vehicles being zero emission</p> <p>County Climate Change and Environment Strategy (2022)</p> <p>Cambridge City Council Climate Change Strategy (2021-2026)</p> <p>South Cambridgeshire District Council Zero Carbon Strategy (2020) - This sets out the need to halve net carbon emissions in the district by at least 2030</p>	<p><a href="https://cambridgeshirepeterborough-ca.gov.uk/what-we-deliver/environment/">cambridgeshirepeterborough-ca.gov.uk/what-we-deliver/environment/</a></p> <p>Cambridgeshire County Council: <a href="https://www.cambridgeshire.gov.uk/residents/climate-change-energy-and-environment/climate-change-and-environment-strategy">www.cambridgeshire.gov.uk/residents/climate-change-energy-and-environment/climate-change-and-environment-strategy</a></p> <p>Cambridge City council: <a href="https://www.cambridge.gov.uk/climate-change-strategy">www.cambridge.gov.uk/climate-change-strategy</a></p> <p>South Cambridgeshire District Council: <a href="https://www.scambs.gov.uk/climate-emergency-and-nature/policy-and-strategies/zero-carbon-strategy">www.scambs.gov.uk/climate-emergency-and-nature/policy-and-strategies/zero-carbon-strategy</a></p>
<p><b>Cambridgeshire &amp; Peterborough Integrated Care System Strategy</b></p>	<p>Priority 2 references the need to ‘Create an environment to give people the opportunity to be as healthy as they can be’ including clean air</p>	<p><a href="https://www.cpics.org.uk/our-priorities">www.cpics.org.uk/our-priorities</a></p>

## Appendix D: Glossary of Terms

Abbreviation	Description
Ambient	Existing conditions in the area
AQAP	Air Quality Action Plan
AQG	Air Quality Guidelines
AQMA	Air Quality Management Area
ASR	Annual Status Report
Background sources of air pollution	These include regional and national sources such as transboundary pollution, natural sources such as sea salt spray and secondary pollution associated with chemical reactions in the atmosphere.
CCC	Cambridge City Council
COMEAP	Committee on Medical Effects of Air Pollution
DEFRA	Department for Environment, Food and Rural Affairs
GCP	Greater Cambridge Partnership
GDP	Gross Domestic Product
HGV's	Heavy Duty Vehicles such as lorries
EU	European Union
LAQM	Local Air Quality Management

Abbreviation	Description
NAEI	National Atmospheric Emissions Inventory
NO <sub>2</sub>	Nitrogen Dioxide
NO <sub>x</sub>	Nitrogen Oxides
PM <sub>10</sub>	Airborne particulate matter with an aerodynamic diameter of 10µm or less
PM <sub>2.5</sub>	Airborne particulate matter with an aerodynamic diameter of 2.5µm or less
SCDC	South Cambridgeshire District Council
SO <sub>2</sub>	Sulphur Dioxide
SPD	Supplementary Planning Document
WHO	World Health Organisation
ug/m <sup>3</sup>	Unit of measurement - Micrograms per cubic metre
1km <sup>2</sup>	Unit of Measurement - One kilometre by one kilometre